

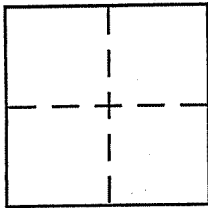
CORNER RECORD

Document Number APN 180-221-30

City of Near San Rafael

County of Marin, California

Brief Legal Description Parcel 2, 3 P.M. 59 / APN 180-221-30



CORNER TYPE

Government Corner ☐ Control ☐
Meander ☐ Property ☒
Rancho ☐ Other ☐
Date of Survey _____

COORDINATES (Optional)

N. _____
E. _____
Zone _____ NAD27 ☐ NAD83 ☐
NAD83 Epoch _____
Elev. _____
Vert. Datum: NGVD29 ☐ NAVD88 ☐
Meas. Units: Metric ☐ Imperial ☐

Corner - Left as found ☐ Found and tagged ☐ Established ☒ Reestablished ☐ Rebuilt ☐

Identification and type of corner found: Evidence used to identify or procedure used to establish or reestablish the corner:

See Back

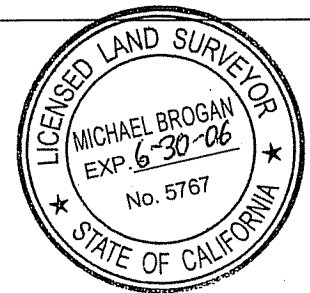
A description of the physical condition of the monument as found and as set or reset:

See Back

SURVEYOR'S STATEMENT

This Corner Record was prepared by me or under my direction in conformance with the Land Surveyor's Act on January 8 2006.

Signed Michael A. Brogan P.L.S or R.C.E. No. LS 5767



COUNTY SURVEYOR'S STATEMENT

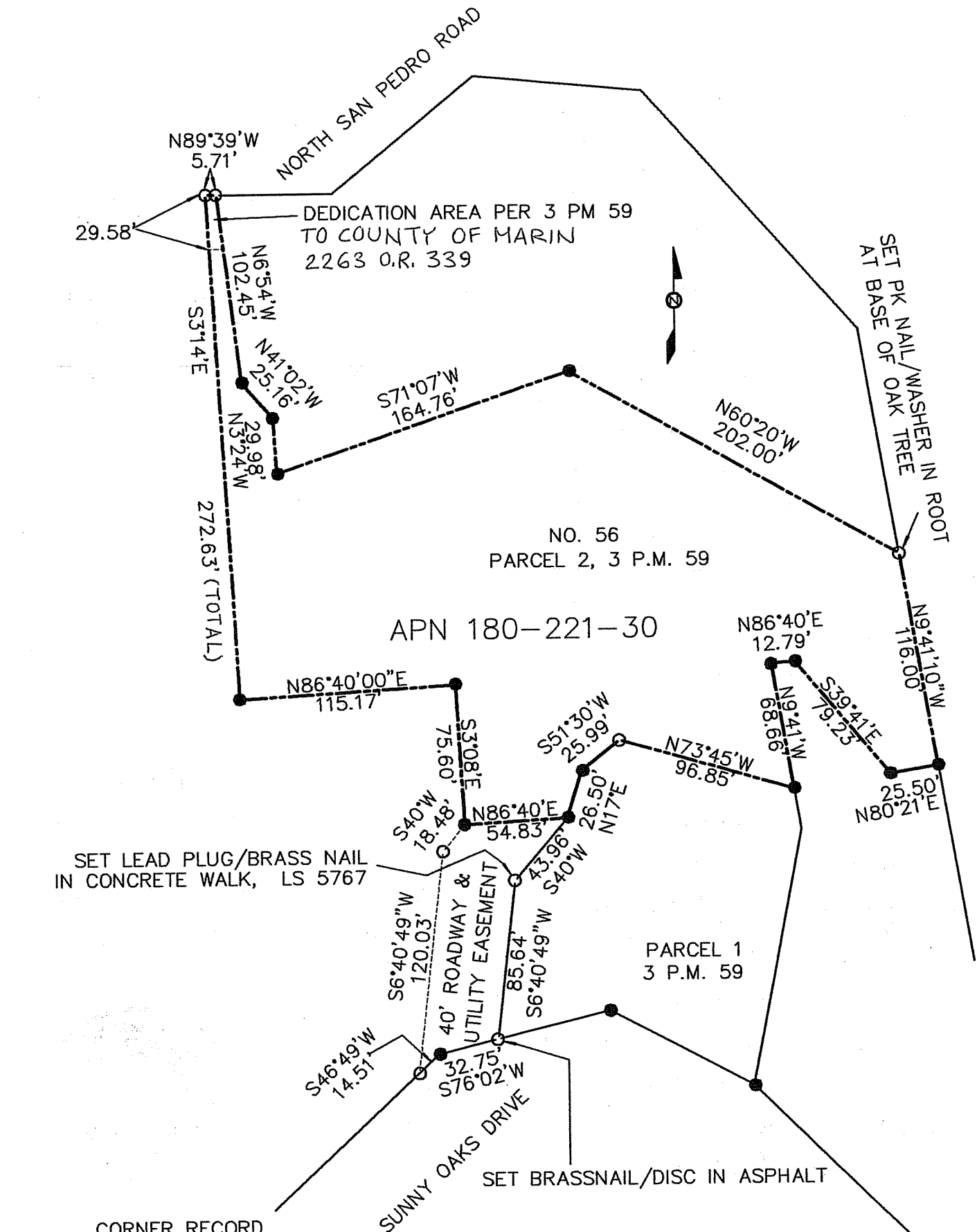
This Corner Record was received JANUARY 11, 2006
and examined and filed FEBRUARY 8, 2006

Signed [Signature] P.L.S or R.C.E. No. 7128

Title COUNTY SURVEYOR



County Surveyor's Comment _____



CORNER RECORD
NEAR SAN RAFAEL MARIN COUNTY
PARCEL 2 OF 3 P.M. 59
M. BROGAN AND ASSOCIATES, INC.
JOB NO. 5623 NOT TO SCALE

NOTES:
DIMENSIONS ARE IN FEET AND DECIMALS THEREOF
● = FOUND EXISTING MONUMENTS PER 3 P.M. 59
○ = SET 1/2" REBAR WITH CAP, LS 5767
UNLESS OTHERWISE NOTED