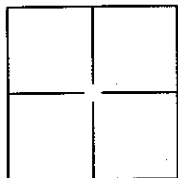


# CORNER RECORD

Document Number APN 180-212-18County of Marin, CaliforniaBrief Legal Description Parcel A of 2 P.M. 10 SAN RAFAEL

## CORNER TYPE

Government Corner ☐ Control ☐  
Meander ☐ Property ☒  
Rancho ☐ Other ☐

Date of Survey March 21, 2004

## COORDINATES (Optional)

N. \_\_\_\_\_  
E. \_\_\_\_\_  
Zone N/A NAD27 ☐ NAD83 ☐  
NAD83 Epoch \_\_\_\_\_  
Vert. Datum: NGVD29 ☐ NAVD88 ☐  
Meas. Units: Metric ☐ Imperial ☐

Corner— Left as found ☒ Found and tagged ☒ Established ☐ Reestablished ☐ Rebuilt ☐

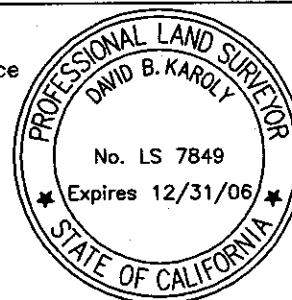
Identification and type of corner found: Evidence used to identify or procedure used to establish or reestablish corner: FOUND THREE (3) THREE-QUARTER (3/4) INCH IRON PIPES. ONE AT THE SOUTHWEST CORNER OF PARCEL A HAS THE ORIGINAL BRASS TAG RE 10057. THE FRONT TWO ARE MISSING THEIR TAGS (PROBABLY DUE TO VEHICLE TRAFFIC AND LAWN MOWER) BUT FIT THE RECORD POSITION PER 2 P.M. 10. THEREFORE I ACCEPTED THEM AS MARKING THE CORNERS SHOWN ON THE MAP. FOUND ONE 2x2 REDWOOD HUB MARKED AS FOUND ON 2 P.M. 10 (1967) AT THE SOUTHEAST CORNER OF PARCEL A.

A description of the physical condition of the monument as found and as set or reset: THE 2x2 HUB WAS FOUND IN GOOD CONDITION EXCEPT THE TOP IS ROUNDED OVER BY ROT. DUE TO THE MOSTLY GOOD CONDITION OF THE HUB, I SET A 1/2" REBAR WITH PLASTIC CAP, LS7849, ALONG SIDE ITS NORTHERLY FACE. SEE THE DETAIL ON THE MAP.

## SURVEYOR'S STATEMENT

This Corner Record was prepared by me or under my direction in conformance with the Land Surveyor's on March 24, 2004

Signed Mark Wallace P.L.S. Number LS 7849  
For Mark Wallace



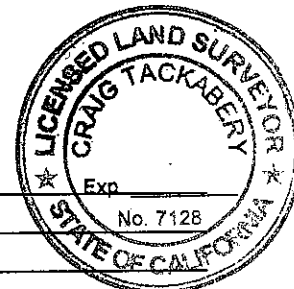
## SURVEYOR'S STATEMENT

This Corner Record was received APRIL 7, 2004 and examined and filed APRIL 16, 2004

Signed Craig Tackabery P.L.S. or R.C.E. Number 7128

Title COUNTY SURVEYOR

County Surveyor's Comment \_\_\_\_\_





*David B. Karoly*

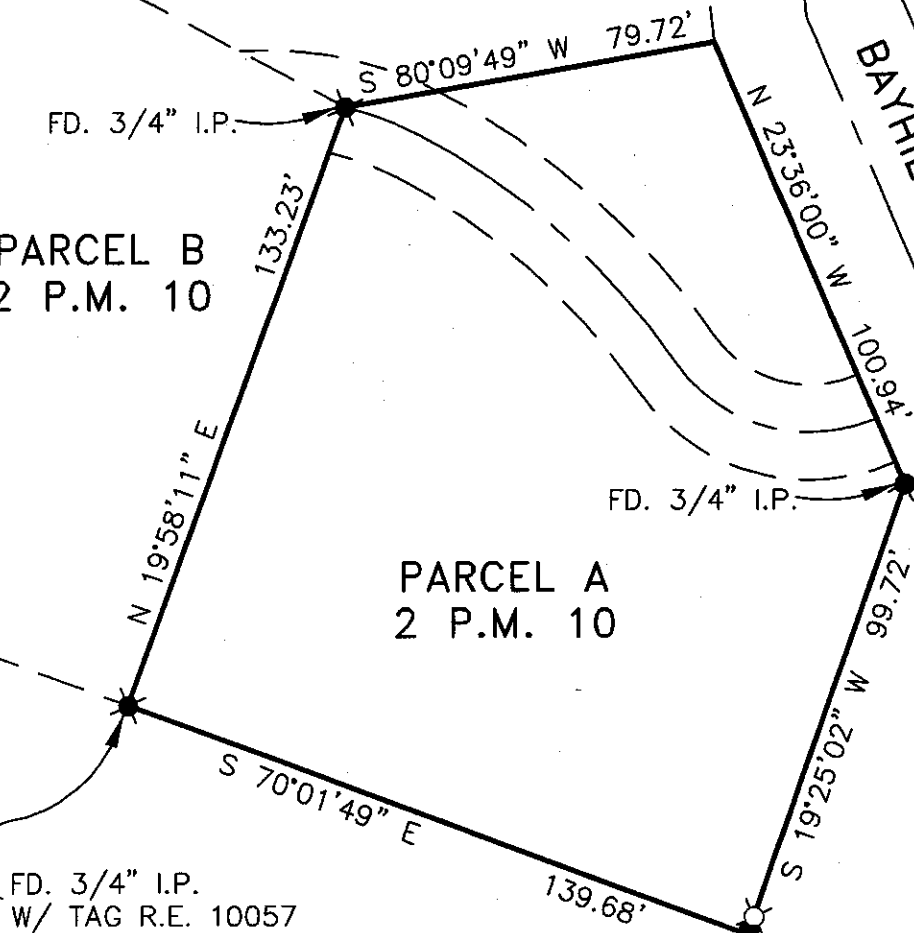
PARCEL C  
2 P.M. 10



PARCEL B  
2 P.M. 10

PARCEL A  
2 P.M. 10

BAYHILLS DRIVE



FD. 3/4" I.P.  
W/ TAG R.E. 10057

SET 1/2" REBAR  
WITH PLASTIC CAP  
LS7849 AS SHOWN

FD 2x2  
REDWOOD  
HUB (TOP ROTTED)

SEE DETAIL

0.10'