

A.P. #180-161-24

CORNER RECORD

COUNTY OF MARIN T. R. MERIDIAN CALIFORNIA

CORNER TYPE GOVT. CORNER ☐ MEANDER ☐ RANCHO ☐ CONTROL ☐ OTHER ☐

CORNER IDENTIFICATION — DATE OF VISIT 19

CORNER — LEFT AS FOUND ☐ FOUND AND TAGGED ☐ REESTABLISHED OBLITERATED CORNER ☐ REBUILT ☐

PHYSICAL DESCRIPTION OF CORNER FOUND; EVIDENCE AND METHOD USED TO IDENTIFY OR REESTABLISH

AP 180-161-24

PHYSICAL DESCRIPTION OF MONUMENTS REBUILT OR PERPETUATED

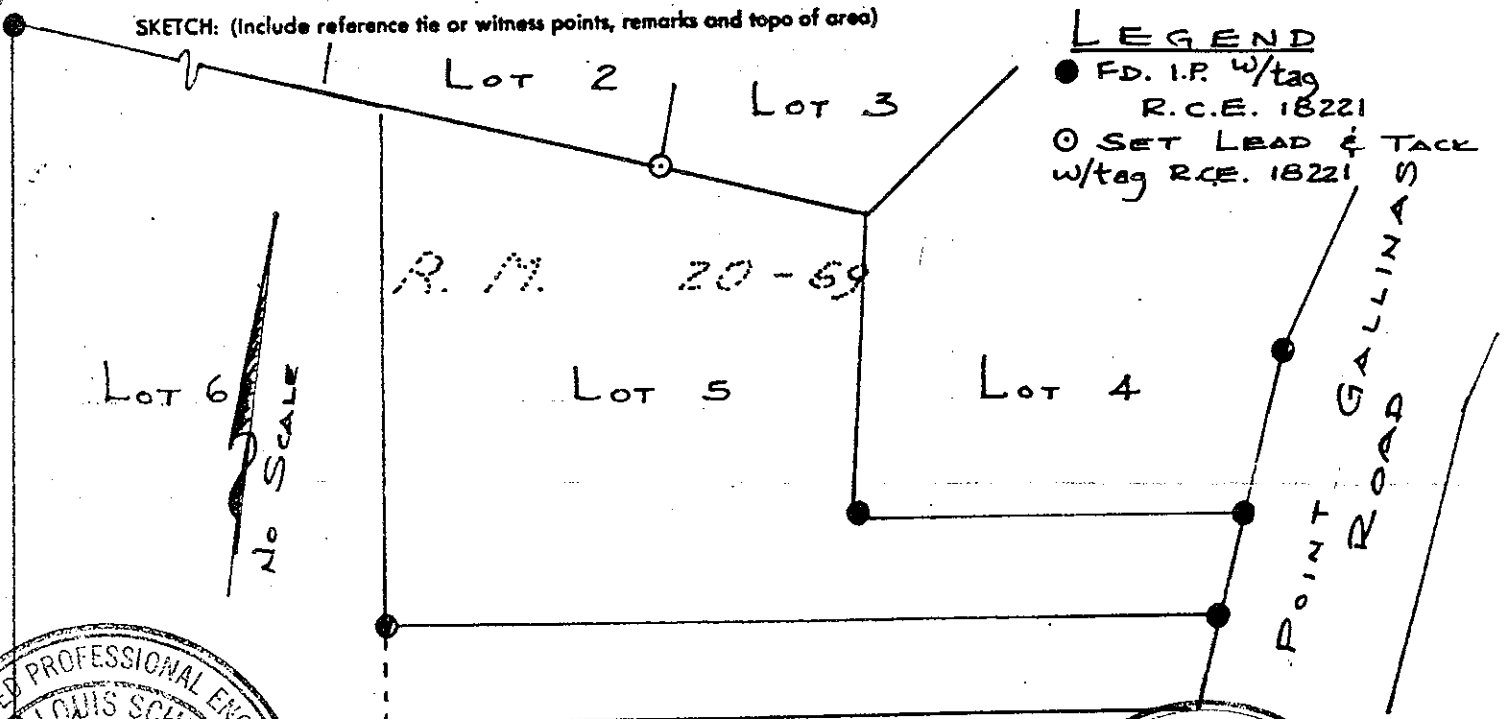
SET LEAD & TACK w/tag, SOUTHEAST CORNER LOT 2, P.M. 20-69

CALIFORNIA COORDINATE SYSTEM ORDER: FIRST ☐ SECOND ☐ THIRD ☐

STATIONS USED: NGS (USC & GS) ☐ STATE ☐ COUNTY ☐ OTHER ☐ STATION STATION

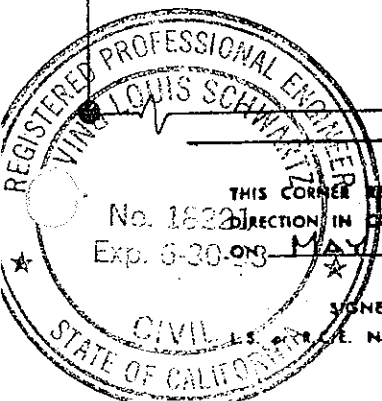
ZONE ELEVATION NORTHINGS (Y) EASTINGS (X)

SKETCH: (Include reference tie or witness points, remarks and topo of area)



LEGEND

- FD. I.P. w/tag R.C.E. 18221
- SET LEAD & TACK w/tag R.C.E. 18221



SURVEYOR'S CERTIFICATE

THIS CORNER RECORD WAS PREPARED BY ME OR UNDER MY DIRECTION IN CONFORMANCE WITH THE LAND SURVEYORS ACT

No. 18221 MAY 8 1990

SIGNED: [Signature] C 18221

COUNTY SURVEYOR'S CERTIFICATE

THE CORNER RECORD WAS EXAMINED AND FILED

FILED [Signature] 1990

NO. C 21,281

DOCUMENT No. Exp. 9-30-93

STATEMENT ON BACK OF SHEET

