

CORNER RECORD

Document Number 180-07

City of Santa Venetia

County of Marin, California

Brief Legal Description

Map of Gallinas Village unit six

J.C. Oglesby R.C.E. 1953 7 RM 88

CORNER TYPE

Government Corner ☐

Control ☐

Meander ☐

Property ☐

Rancho ☐

Other ☒

Date of Survey Sept. 2002

Elev. _____

Coordinates

(Optional)

N. _____

E. _____

Zone _____ Datum _____

Corner - Left as found ☐ Found and tagged ☐ Established ☐ Reestablished ☒ Rebuilt ☐

Identification and type of corner found: Evidence used to identify or procedures used to establish or reestablish the corner:

Subdivision monuments on Vendola Drive at the intersection with LaBrea Way and Hacienda Way were referenced out prior to construction and later re-established.

A description of the physical condition of the monument as found and as set or reset:

Re-set Well Monuments in found location with brass disk punched RCE #15945.

See Page Two

SURVEYOR'S STATEMENT

This Corner Record was prepared by me or under my direction in conformance with The Land Surveyor's Act on 11/06, 2003.

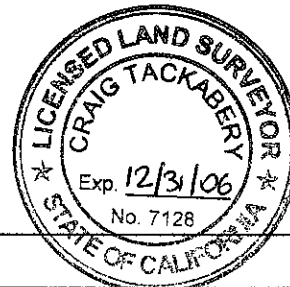
Signed W. Edward Nute, R.C.E.



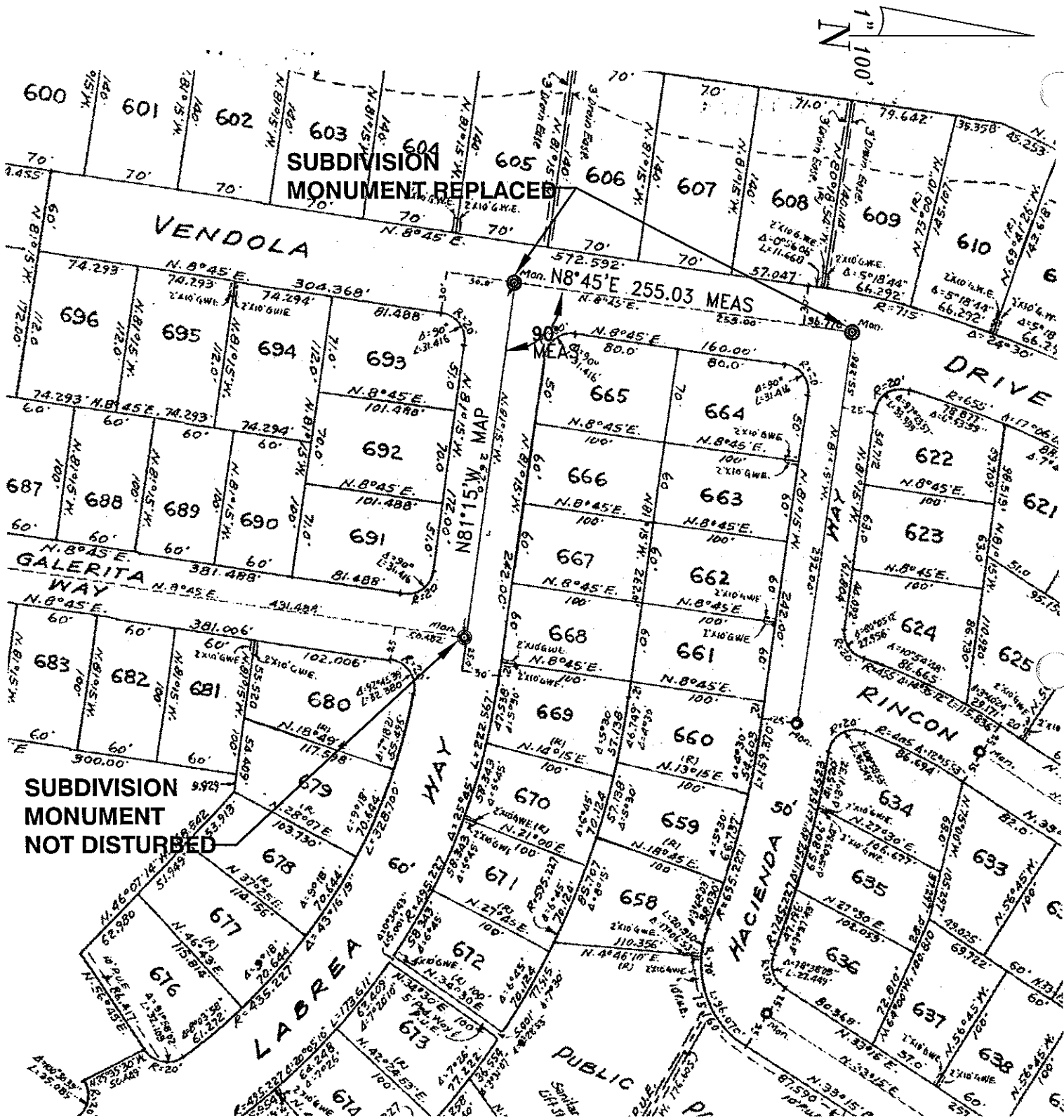
COUNTY SURVEYOR'S STATEMENT

This Corner Record was received NOVEMBER 10, 03 and examined and filed NOVEMBER 20, 03.

Signed Craig Tackabery, Title COUNTY SURVEYOR



County Surveyor's Comments: _____



CORNER RECORD

7 RM 88

NUTE ENGINEERING
SAN RAFAEL, CA