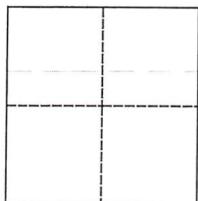


CORNER RECORD

Agency Index DPW #19-145Document Number APN 180-055-01City of SAN RAFAEL County of MARIN, CaliforniaBrief Legal Description LOT 849, MAP OF GALLINAS SUBDIVISION UNIT SEVEN, 8 MAPS 36, MARIN COUNTY RECORDS**CORNER TYPE****COORDINATES (Optional)**Government Corner ☐ Control ☐Meander ☐ Property ☒Rancho ☐ Other ☐Date of Survey 11/26/2019

N. _____ E. _____

Elevation _____

Units ☒ Metric ☐ U.S. Survey Foot ☐

Horizontal Datum _____

Zone _____ Epoch Date _____

Vertical Datum _____

☐ Complies with Public Resources Code §§8801-8819☐ Complies with Public Resources Code §§8890-8902PLS Act Ref.: ☒ 8765(d) ☐ 8771 ☐ 8773 ☐ Other:Corner/
Monument: ☐ Left as found ☐ Established ☐ Rebuilt ☐ Pre-Construction☒ Found and tagged ☒ Reestablished ☐ Referenced ☐ Post-Construction

Narrative of corner identified and monument as found, set, reset, replaced, or removed:

☐ See sheet #2 for description(s):

USED FOUND CENTERLINE MONUMENTS PER RECORD MAP, AND REMAINS OF MONUMENT AT NORTHWEST CORNER OF PARCEL TO ESTABLISH BOUNDARY. TAGGED FOUND MONUMENT AND SET MISSING CORNER MONUMENTS USING RECORD DATA. MONUMENTS SET AT OFFSETS ARE REFERENCED TO ACTUAL CORNERS. ALL AS SHOWN ON SHEET 2.

SURVEYOR'S STATEMENT

This Corner Record was prepared by me or under my direction in conformance with

the Professional Land Surveyors' Act on Nov, 2019Signed [Signature] P.L.S. or R.C.E. No. 3890**COUNTY SURVEYOR'S STATEMENT**This Corner Record was received DEC. 06, 2019and examined and filed APR. 22, 2020Signed [Signature] P.L.S. or R.C.E. No. 9292Title DEPUTY C.S.

County Surveyor's Comment

SUR _____
ROSAL WAY
APN: 180-055-01
CITY OF: SAN RAFAEL





SCALE: 1" = 30'

LEGENDFOUND PIN IN MONUMENT
WELL PER R1FOUND LEAD AND SHANK OF
NAIL AT RECORD LOCATION,
ACCEPTED AS LOT CORNER
OVER R1. SET NAIL AND
BRASS TAG LS 3890 IN LEADSET 1/2" IRON PIPE TAGGED
LS 3890SET 1/2" IRON PIPE, TAGGED LS
3890 AT OFFSET INDICATED.

R1&M

RECORD AND MEASURED DATA
ARE IDENTICAL

CR1

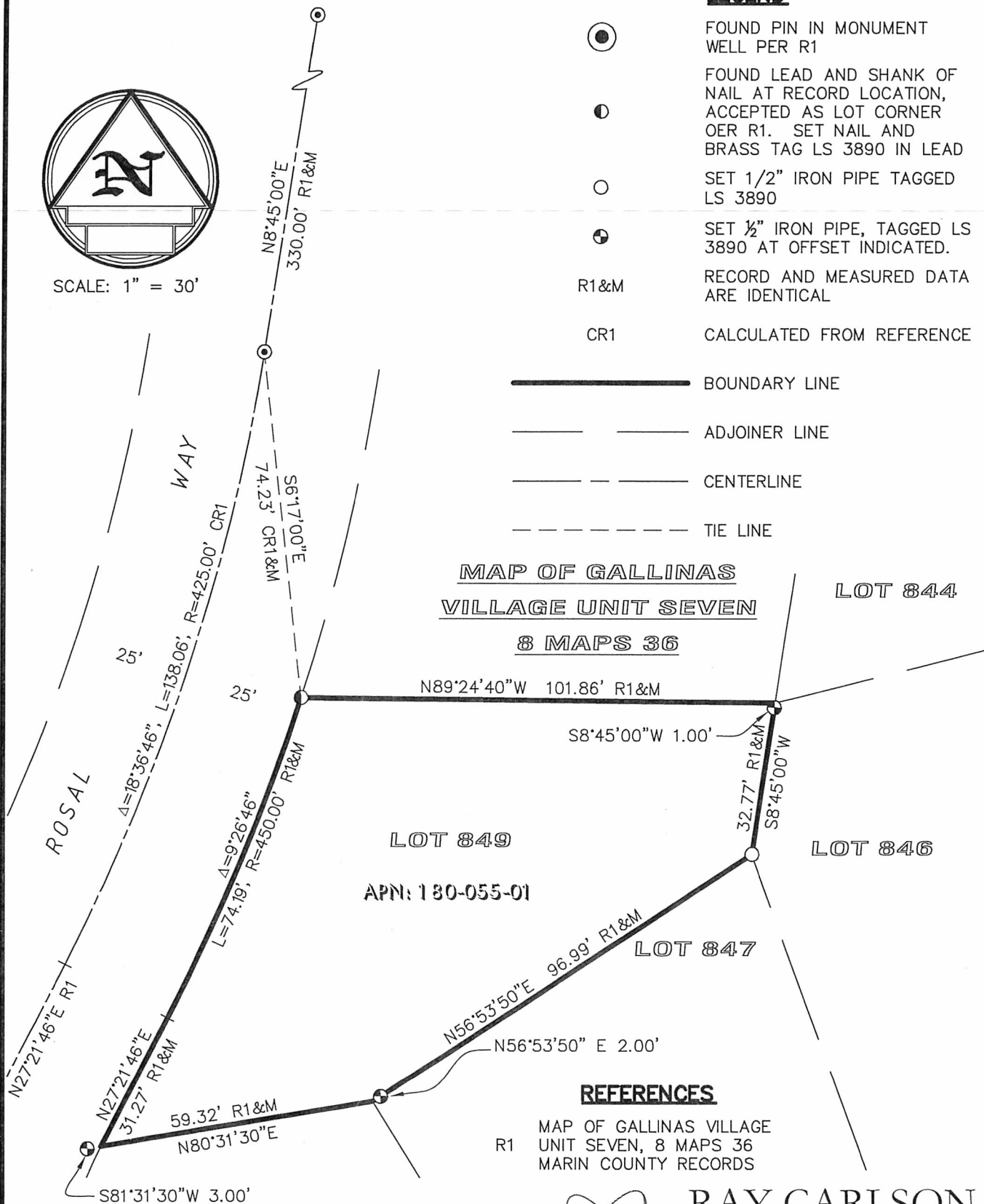
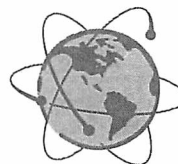
CALCULATED FROM REFERENCE

— BOUNDARY LINE

— ADJOINER LINE

— CENTERLINE

--- TIE LINE

**MAP OF GALLINAS
VILLAGE UNIT SEVEN****8 MAPS 36****REFERENCES**R1
MAP OF GALLINAS VILLAGE
UNIT SEVEN, 8 MAPS 36
MARIN COUNTY RECORDS**NOTE:**EXISTING FENCE LINES FOLLOW
PROPERTY LINES AS ESTABLISHED.
MONUMENTS SET AT OFFSET
LOCATIONS DUE TO FENCE POST AT
CORNERS AS SHOWN.**RAY CARLSON**
AND ASSOCIATES, INC.

Mapping for a Better World™

SURVEYING • MAPPING • GIS • CONSULTING
411 RUSSELL AVENUE SANTA ROSA, CALIFORNIA 95403
(707) 528-7649 • RCMAPS.COM

© 2019, Ray Carlson and Associates, Inc.

APN 180-055-01 NOVEMBER 2019 JOB NO. 2019-109