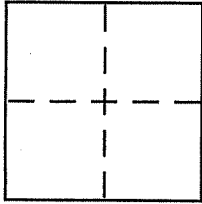


CORNER RECORD

City of San Rafael
Brief Legal Description Lot 39 of 7 Maps 12

Document Number 180-042-28
County of _____, California



CORNER TYPE

Government Corner ☐ Control ☐
Meander ☐ Property ☒
Rancho ☐ Other ☐
Date of Survey _____

COORDINATES (Optional)

N. _____
E. _____
Zone _____ NAD27 ☐ NAD83 ☐
NAD83 Epoch _____
Elev. _____
Vert. Datum: NGVD29 ☐ NAVD88 ☐
Meas. Units: Metric ☐ Imperial ☐

Corner - Left as found ☐ Found and tagged ☐ Established ☐ Reestablished ☐ Rebuilt ☐

Identification and type of corner found: Evidence used to identify or procedure used to establish or reestablish the corner:

See page 2 of 2

A description of the physical condition of the monument as found and as set or reset:

See page 2 of 2

SURVEYOR'S STATEMENT

This Corner Record was prepared by me or under my direction in conformance with the Land Surveyor's Act on 4-29-08

Signed [Signature] P.L.S or R.C.E. No. 6784



COUNTY SURVEYOR'S STATEMENT

This Corner Record was received 5-7-2008

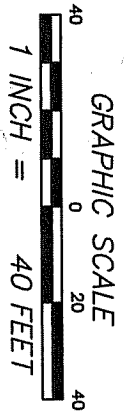
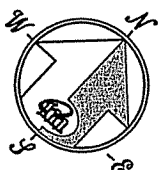
and examined and filed 6-5-2008

Signed [Signature] P.L.S or R.C.E. No. 7128

Title COUNTY SURVEYOR

County Surveyor's Comment _____





REFERENCE

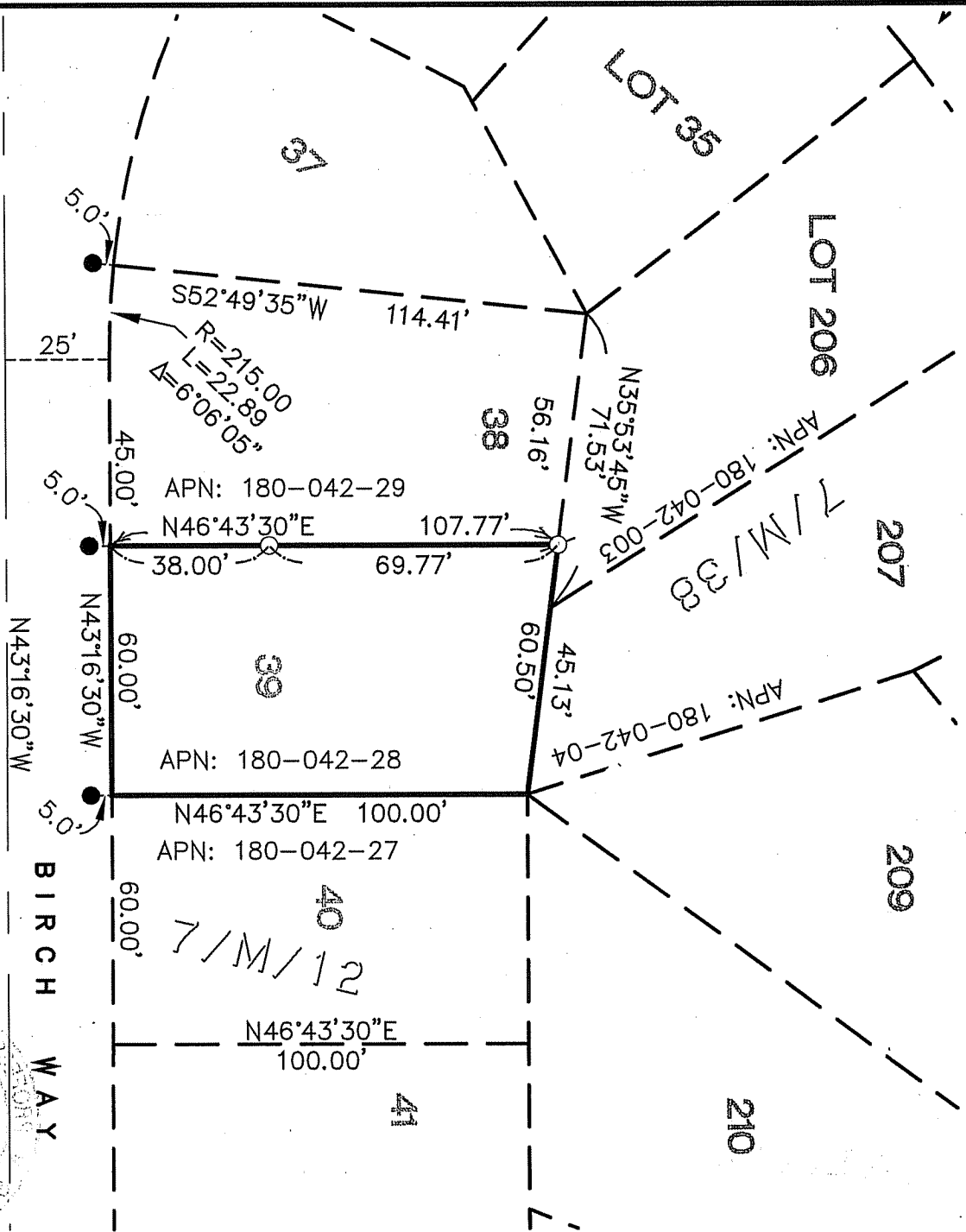
"RECORD OF SURVEY, LANDS OF EPIDENDIO" FILED FOR RECORD 22 DECEMBER 2003 IN BOOK 2003 OF MAPS, AT PAGE 316, MARIN COUNTY RECORDS. [AJ

LEGEND

- FOUND LEAD PLUG AND TAG, PLS 6784 PER [A]
- SET 5/8" REBAR WITH CAP, PLS 6784
- SET LEAD PLUG AND TAG, PLS 6784

NOTE
RECORD=MEASURED

CORNER RECORD



Meridian Surveying
 1812 UNION STREET
 SAN FRANCISCO, CA 94123
 (415) 440-4131
 info@meridiansurvey.com
 03055
 777 GRAND AVENUE, SUITE 202
 SAN RAFAEL, CA 94901
 (415) 456-6460