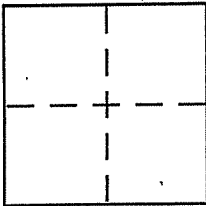


CORNER RECORD

Document Number 180-035-07
City of Vicinity of San Rafael County of Marin, California
Brief Legal Description Lot 5, 7 RM 12 - APN 180-035-07

**CORNER TYPE**

Government Corner ☐ Control ☐
Meander ☐ Property ☒
Rancho ☐ Other ☐
Date of Survey _____

COORDINATES (Optional)

N. _____
E. _____
Zone _____ NAD27 ☐ NAD83 ☐
NAD83 Epoch _____
Elev. _____
Vert. Datum: NGVD29 ☐ NAVD88 ☐
Meas. Units: Metric ☐ Imperial ☐

Corner - Left as found ☐ Found and tagged ☐ Established ☒ Reestablished ☐ Rebuilt ☐

Identification and type of corner found: Evidence used to identify or procedure used to establish or reestablish the corner:

See Back

A description of the physical condition of the monument as found and as set or reset:

See Back

SURVEYOR'S STATEMENT

This Corner Record was prepared by me or under my direction in conformance with
the Land Surveyor's Act on August 20, 2009

Signed Michael A Brogan P.L.S or R.C.E. No. LS 5767
CHIEF OF SURVEYS
M.C.D.P.W.

**COUNTY SURVEYOR'S STATEMENT**

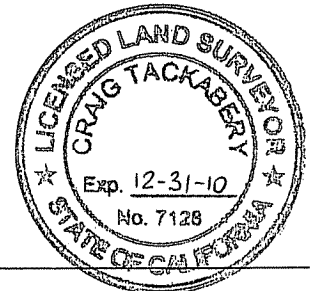
This Corner Record was received AUGUST 20, 2009

and examined and filed SEPTEMBER 9, 2009

Signed [Signature] P.L.S or R.C.E. No. 7128

Title COUNTY SURVEYOR

County Surveyor's Comment _____

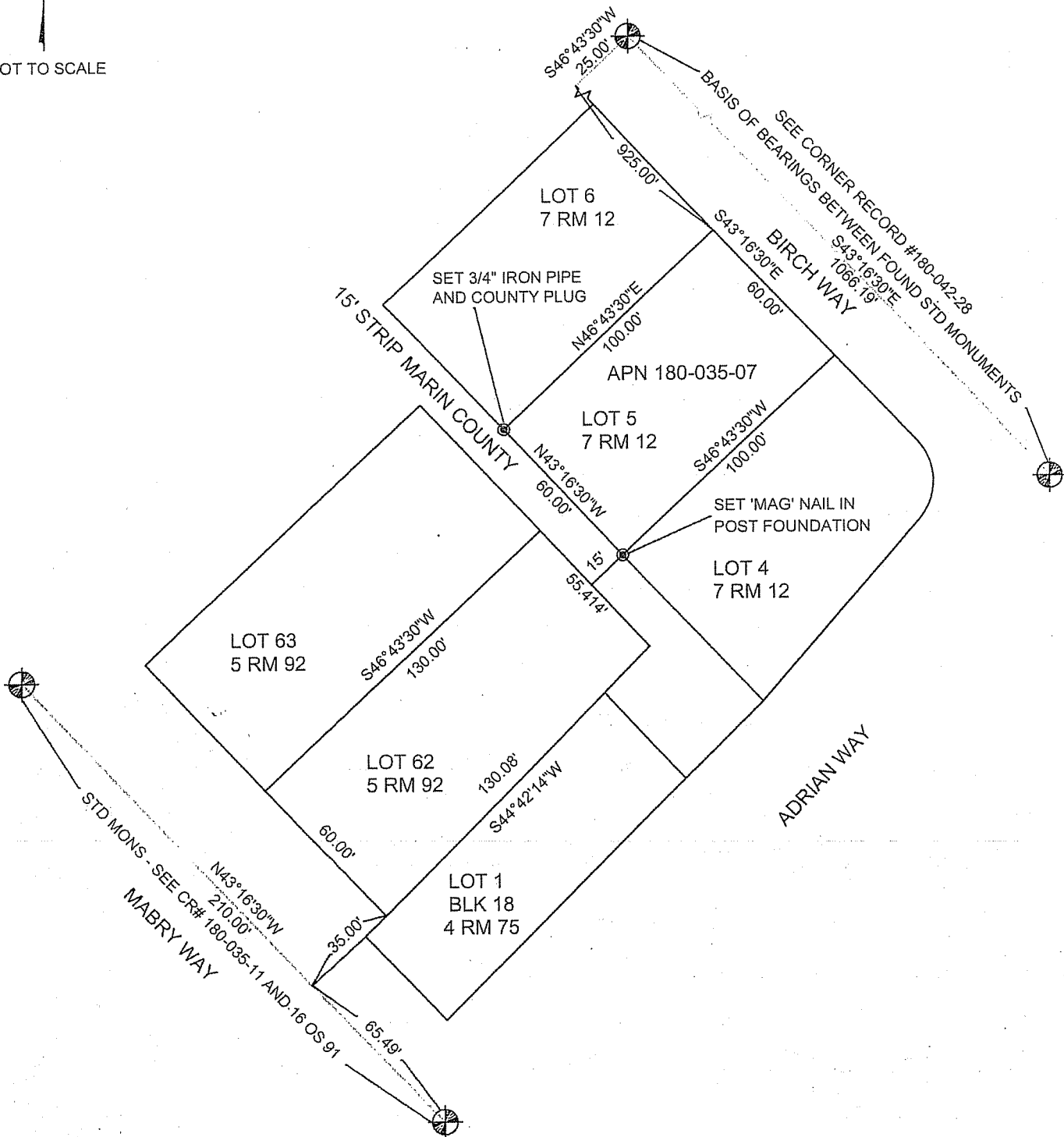


CORNER RECORD

APN 180-035-07



NOT TO SCALE



SURVEY SECTION
DEPARTMENT OF PUBLIC WORKS
MARIN COUNTY