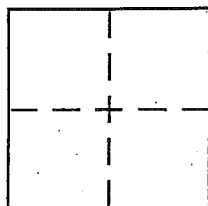


CORNER RECORD

Document Number 180-033-06
 City of San Rafael County of MARIN, California

Brief Legal Description Control Monuments of 16 RS 91 in Santa Venetia



CORNER TYPE

Government Corner ☐ Control ☒
 Meander ☐ Property ☐
 Rancho ☐ Other ☐
 Date of Survey _____

COORDINATES (Optional)

N. _____
 E. _____
 Zone _____ NAD27 ☐ NAD83 ☐
 NAD83 Epoch _____
 Elev. _____
 Vert. Datum: NGVD29 ☐ NAVD88 ☐
 Meas. Units: Metric ☐ Imperial ☐

Corner - Left as found ☐ Found and tagged ☐ Established ☐ Reestablished ☐ Rebuilt ☒

Identification and type of corner found: Evidence used to identify or procedure used to establish or reestablish the corner:

Found railroad spikes @ Vendola Dr & Geneva Way

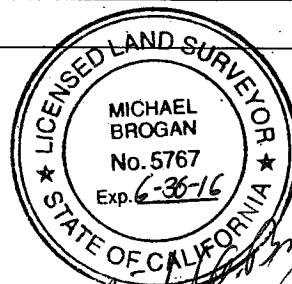
A description of the physical condition of the monument as found and as set or reset:

Reset with Standard County Monument, or
County nail / shiner

SURVEYOR'S STATEMENT

This Corner Record was prepared by me or under my direction in conformance with the Land Surveyor's Act on January 2, 2015

Signed Michael C. Brogan P.L.S. or R.C.E. No. _____



COUNTY SURVEYOR'S STATEMENT

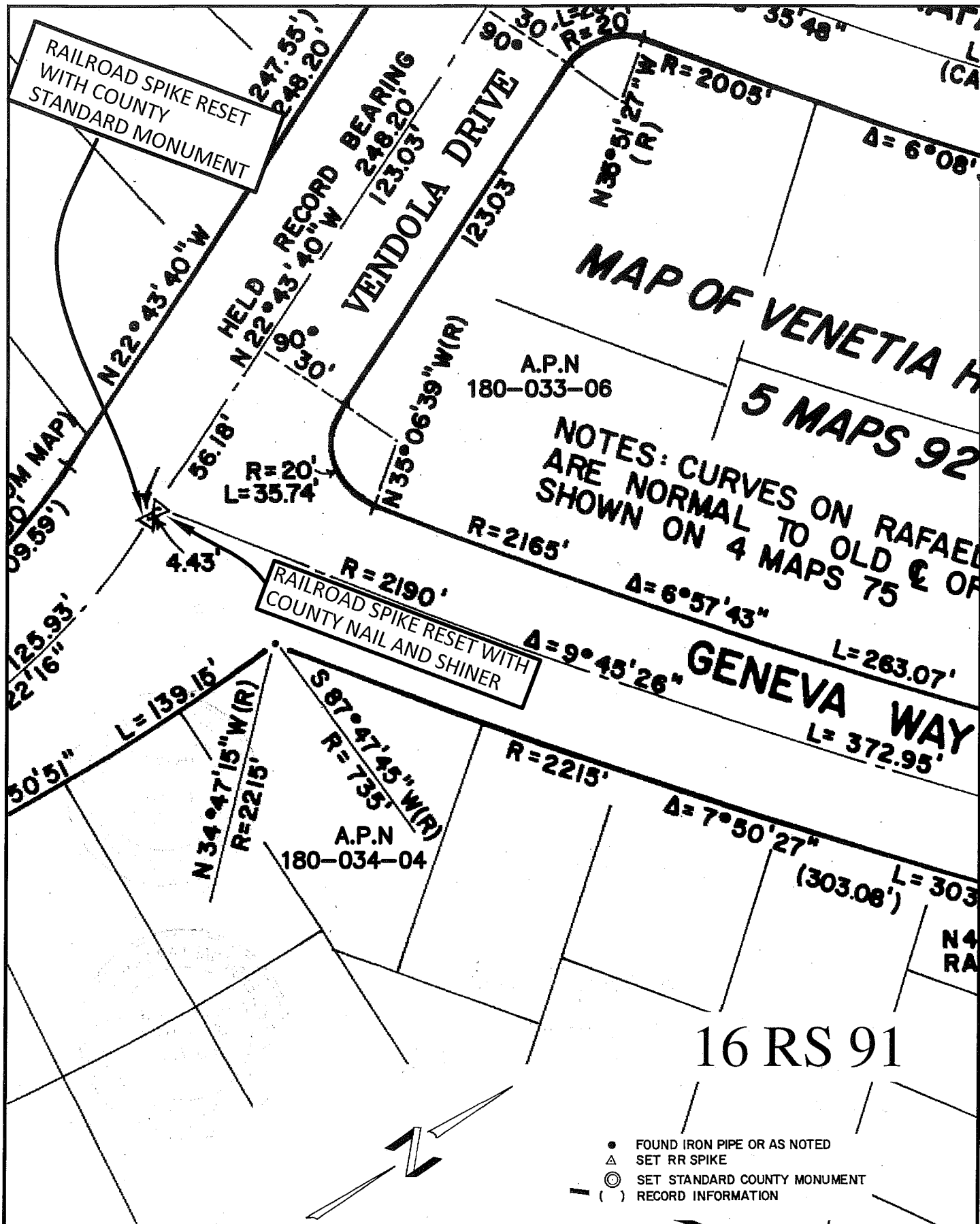
This Corner Record was received JANUARY 5, 2015
 and examined and filed MARCH 18, 2015

Signed Richard G. Simonitch P.L.S. or R.C.E. No. 7821

Title Deputy

County Surveyor's Comment _____





COUNTY OF MARIN
 DEPARTMENT OF PUBLIC WORKS
 SURVEY SECTION

SCALE: 1" = 40'

CORNER RECORD