



JERRICO ASSOCIATES  
SUITE 27  
77 MARK DRIVE  
SAN RAFAEL, CA 94903

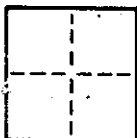
A.P. #180-031-11

6888

# CORNER RECORD

1/2

COUNTY OF Marin T. \_\_\_\_\_ R. \_\_\_\_\_ MERIDIAN \_\_\_\_\_ CALIFORNIA  
CORNER TYPE: GOVT. CORNER ☐ MEANDER ☐ RANCHO ☐ CONTROL ☐ OTHER ☐  
CORNER IDENTIFICATION — DATE OF VISIT \_\_\_\_\_ 19\_\_\_\_



**RECEIVED**

**JUL 25 1990**

Marin County Public Works

CORNER — LEFT AS FOUND ☐ FOUND AND TAGGED ☐ REESTABLISHED OBLITERATED CORNER ☐ REBUILT ☐

PHYSICAL DESCRIPTION OF CORNER FOUND; EVIDENCE AND METHOD USED TO IDENTIFY OR REESTABLISH

Map of Venetia Harbour Unit 2,7 R.M.5 Marin Co., CA.  
Line of lot 154 and 155

Based on found monuments on Mabry way and Rafael Way.

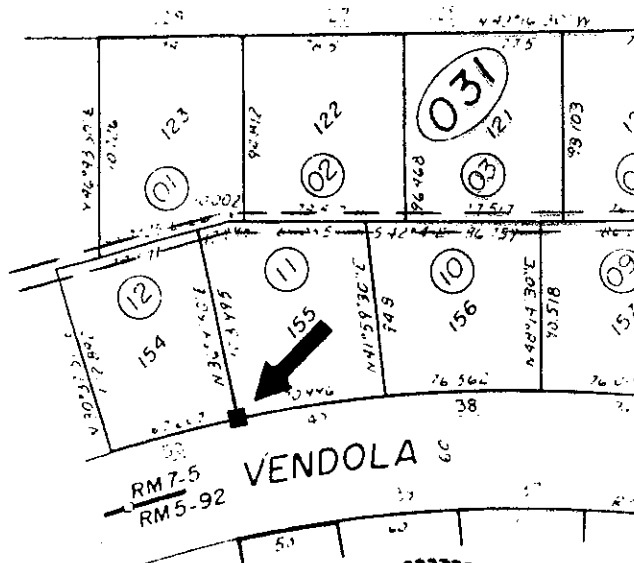
PHYSICAL DESCRIPTION OF MONUMENTS, REBUILT OR PERPETUATED

➔ ■ Set hub and tag L.S. 3887

CALIFORNIA COORDINATE SYSTEM ORDER: FIRST ☐ SECOND ☐ THIRD ☐  
STATIONS USED: NGS (USC & GS) ☐ STATE ☐ COUNTY ☐ OTHER ☐ STATION \_\_\_\_\_ STATION \_\_\_\_\_  
ZONE \_\_\_\_\_ ELEVATION \_\_\_\_\_ NORTHINGS (Y) \_\_\_\_\_ EASTINGS (X) \_\_\_\_\_

SKETCH: (Include reference tie or witness points, remarks and topo of area)

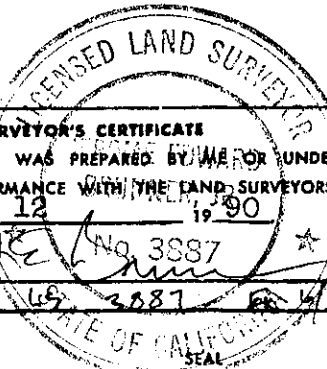
MABRY



## SURVEYOR'S CERTIFICATE

THIS CORNER RECORD WAS PREPARED BY ME OR UNDER MY  
DIRECTION IN CONFORMANCE WITH THE LAND SURVEYORS ACT  
ON July 12 1990

SIGNED: \_\_\_\_\_  
L.S. or R.C.E. No.: 49 3887

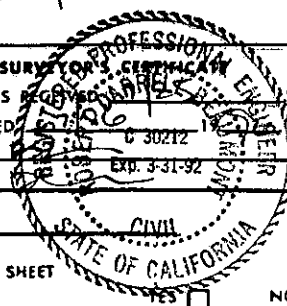


## COUNTY SURVEYOR'S CERTIFICATE

THE CORNER RECORD WAS RECEIVED, EXAMINED, AND FILED  
BY: \_\_\_\_\_  
TITLE: \_\_\_\_\_

DOCUMENT No. \_\_\_\_\_

STATEMENT ON BACK OF SHEET



YES ☐ NO ☒



**JERRICO ASSOCIATES**  
SUITE 27  
77 MARK DRIVE  
SAN RAFAEL, CA 94903

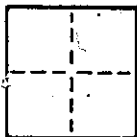
180-031-11

6888

# CORNER RECORD

2/2

COUNTY OF Marin T. \_\_\_\_\_ R. \_\_\_\_\_ MERIDIAN \_\_\_\_\_ CALIFORNIA  
CORNER TYPE: GOV'T. CORNER ☐ MEANDER ☐ RANCHO ☐ CONTROL ☐ OTHER ☐  
CORNER IDENTIFICATION — DATE OF VISIT \_\_\_\_\_ 19\_\_\_\_



CORNER — LEFT AS FOUND ☐ FOUND AND TAGGED ☐ REESTABLISHED OBLITERATED CORNER ☐ REBUILT ☐

PHYSICAL DESCRIPTION OF CORNER FOUND; EVIDENCE AND METHOD USED TO IDENTIFY OR REESTABLISH

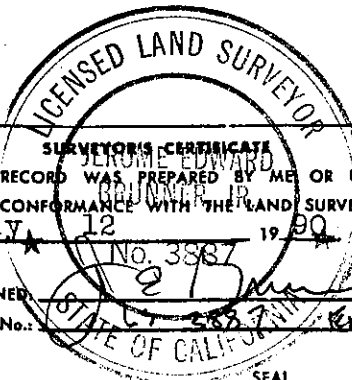
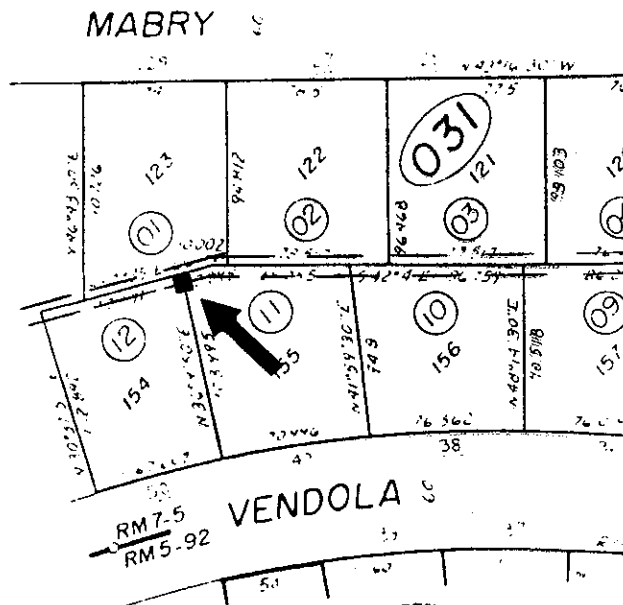
Map of Venetia Harbour Unit 2,7 R.M.5 Marin Co., CA.  
Line of lot 154 and 155  
Based on found monuments on Mabry way and Rafael Way.

PHYSICAL DESCRIPTION OF MONUMENTS, REBUILT OR PERPETUATED

➔ ■ Set hub and tag L.S. 3887 on easement line as reference to corner  
Corner falls in ditch.

CALIFORNIA COORDINATE SYSTEM ORDER: FIRST ☐ SECOND ☐ THIRD ☐  
STATIONS USED: NGS (USC & GS) ☐ STATE ☐ COUNTY ☐ OTHER ☐ STATION \_\_\_\_\_ STATION \_\_\_\_\_  
ZONE \_\_\_\_\_ ELEVATION \_\_\_\_\_ NORTHINGS (Y) \_\_\_\_\_ EASTINGS (X) \_\_\_\_\_

SKETCH: (Include reference tie or witness points, remarks and topo of area)



THIS CORNER RECORD WAS PREPARED BY ME OR UNDER MY  
DIRECTION IN CONFORMANCE WITH THE LAND SURVEYORS ACT  
ON July 12 1990

SIGNED [Signature]  
L.S. or R.C.E. No.: 3887 Exp 6/30/92

COUNTY SURVEYOR'S CERTIFICATE  
THE CORNER RECORD WAS RECEIVED, EXAMINED, AND FILED  
BY: [Signature] C 30212  
TITLE: [Signature] Exp. 3-31-92  
DOCUMENT No. \_\_\_\_\_  
STATEMENT ON BACK OF SHEET \_\_\_\_\_

