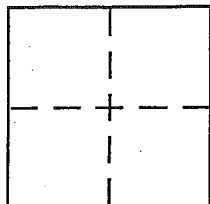


# CORNER RECORD

Document Number 186-012-19

City of San Rafael County of MARIN, California

Brief Legal Description Control Monuments @ Vendola Drive in Santa Venetia



## CORNER TYPE

Government Corner ☐ Control ☒  
Meander ☐ Property ☐  
Rancho ☐ Other ☐  
Date of Survey \_\_\_\_\_

## COORDINATES (Optional)

N. \_\_\_\_\_  
E. \_\_\_\_\_  
Zone \_\_\_\_\_ NAD27 ☐ NAD83 ☐  
NAD83 Epoch \_\_\_\_\_  
Elev. \_\_\_\_\_  
Vert. Datum: NGVD29 ☐ NAVD88 ☐  
Meas. Units: Metric ☐ Imperial ☐

Corner -- Left as found ☐ Found and tagged ☐ Established ☐ Reestablished ☐ Rebuilt ☒

Identification and type of corner found: Evidence used to identify or procedure used to establish or reestablish the corner:

Dr. Vendola - found RR Spikes, Tied to monuments set  
per 16 RS 91

See Back

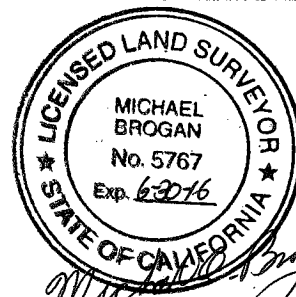
A description of the physical condition of the monument as found and as set or reset:

Rebuilt RR Spikes, after pavement reconstruction,  
as Standard County Monuments

## SURVEYOR'S STATEMENT

This Corner Record was prepared by me or under my direction in conformance with the Land Surveyor's Act on December 23, 2014

Signed Michael G. Brogan P.L.S. or R.C.E. No. LS 5767



## COUNTY SURVEYOR'S STATEMENT

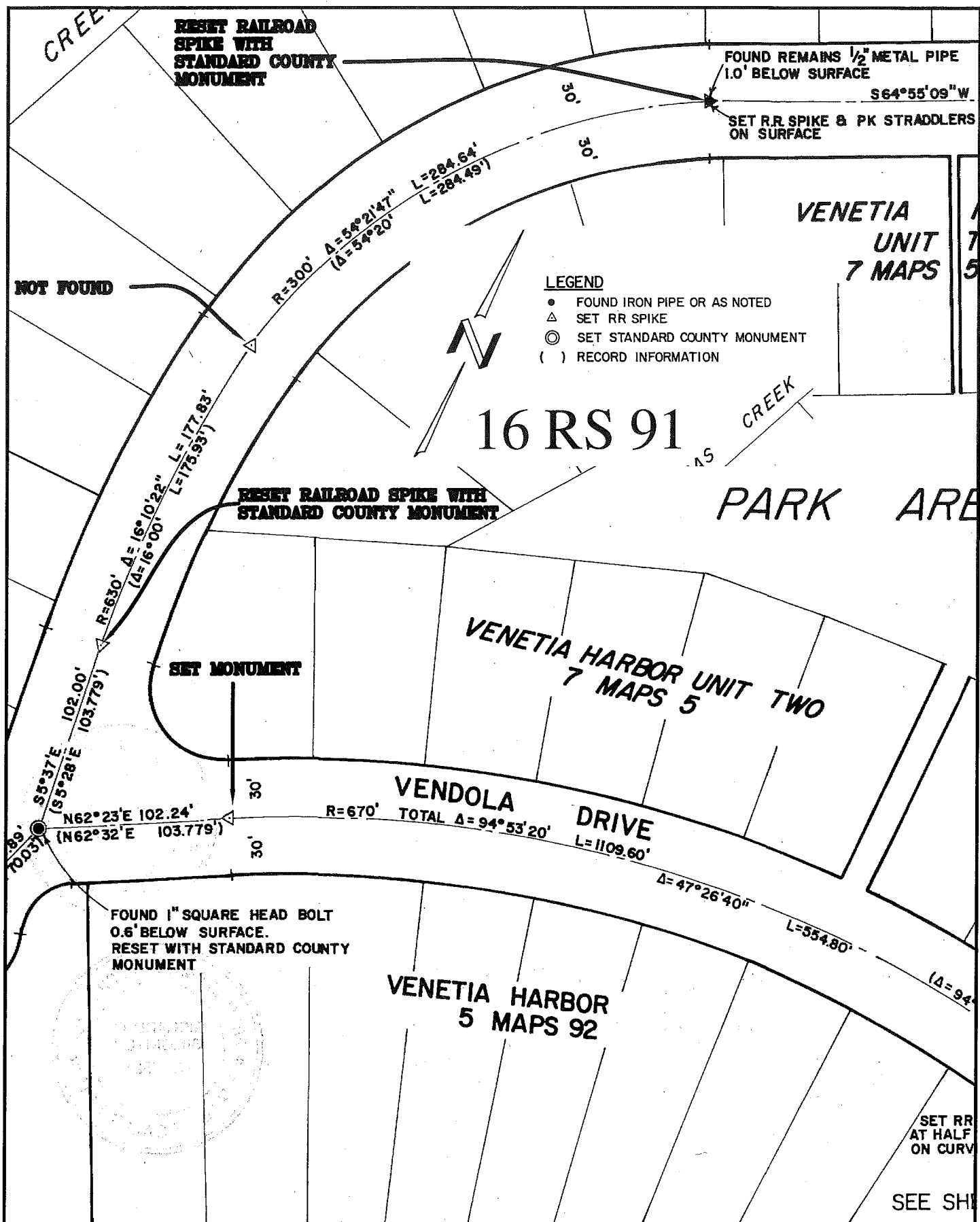
This Corner Record was received January 5, 2015  
and examined and filed MAY 17, 2015

Signed Richard G. Simonitch P.L.S. or R.C.E. No. 7821

Title Deputy

County Surveyor's Comment \_\_\_\_\_





**COUNTY OF MARIN**  
DEPARTMENT OF PUBLIC WORKS  
SURVEY SECTION

SCALE = 70'

CORNER RECORD FOR  
VENDOLA DRIVE