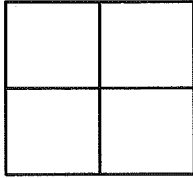


# CORNER RECORD

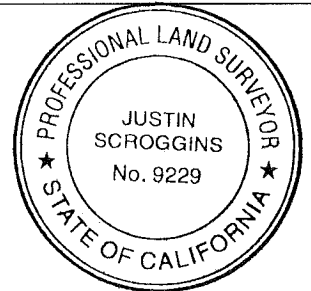
Document Number 179-480-26 ADJCity of San RafaelCounty of Marin, CaliforniaBrief Legal Description City of San Rafael Centerline Street Monument**CORNER TYPE**Government Corner ☐ Control ☐  
Meander ☐ Property ☐  
Rancho ☐ Other ☒Date of Survey August 8, 2016**COORDINATES (Optional)**N. \_\_\_\_\_  
E. \_\_\_\_\_  
Zone \_\_\_\_\_ NAD27 ☐ NAD83 ☐  
NAD83 Epoch \_\_\_\_\_  
Elev. \_\_\_\_\_  
Vert. Datum: NGVD29 ☐ NAVD88 ☐  
Meas. Units: Metric ☐ Imperial ☐Corner - Left as found ☐ Found and tagged ☐ Established ☐ Reestablished ☒ Rebuilt ☒

Identification and type of corner found: Evidence used to identify or procedure used to establish or reestablish the corner:

In compliance with Section 8771 of the Professional Land Surveyors' Act, this corner record is being filed to  
**REESTABLISH** the position of a destroyed and damaged monument POST street construction.

A description of the physical condition of the monument as found and as set or reset:

Monument in cul-de-sac of Sequoia Road destroyed during construction; Reset standard city of San Rafael 2 1/2 inch diameter brass cap punched and stamped LS 9229 in monument well using the witness cut-crosses and most easterly monument shown on Page 2 along Sequoia Road. Monument at intersection of Sequoia Road and Spruce Court disturbed during construction; Original punch on 2 1/2 inch diameter brass cap obliterated and re-marked with punch and cross; rebuilt using witness cut-crosses and monuments not disturbed which are shown on Page 2. Monuments reestablished and rebuilt to preserve the geometry of the monuments shown on the map entitled Map of Redwood Village San Rafael Marin County California, recorded in Volume 2003 of Maps at page 229 as Serial No. 2003-120971 on September 30th, 2003, in the Office of the County Recorder, Marin County.

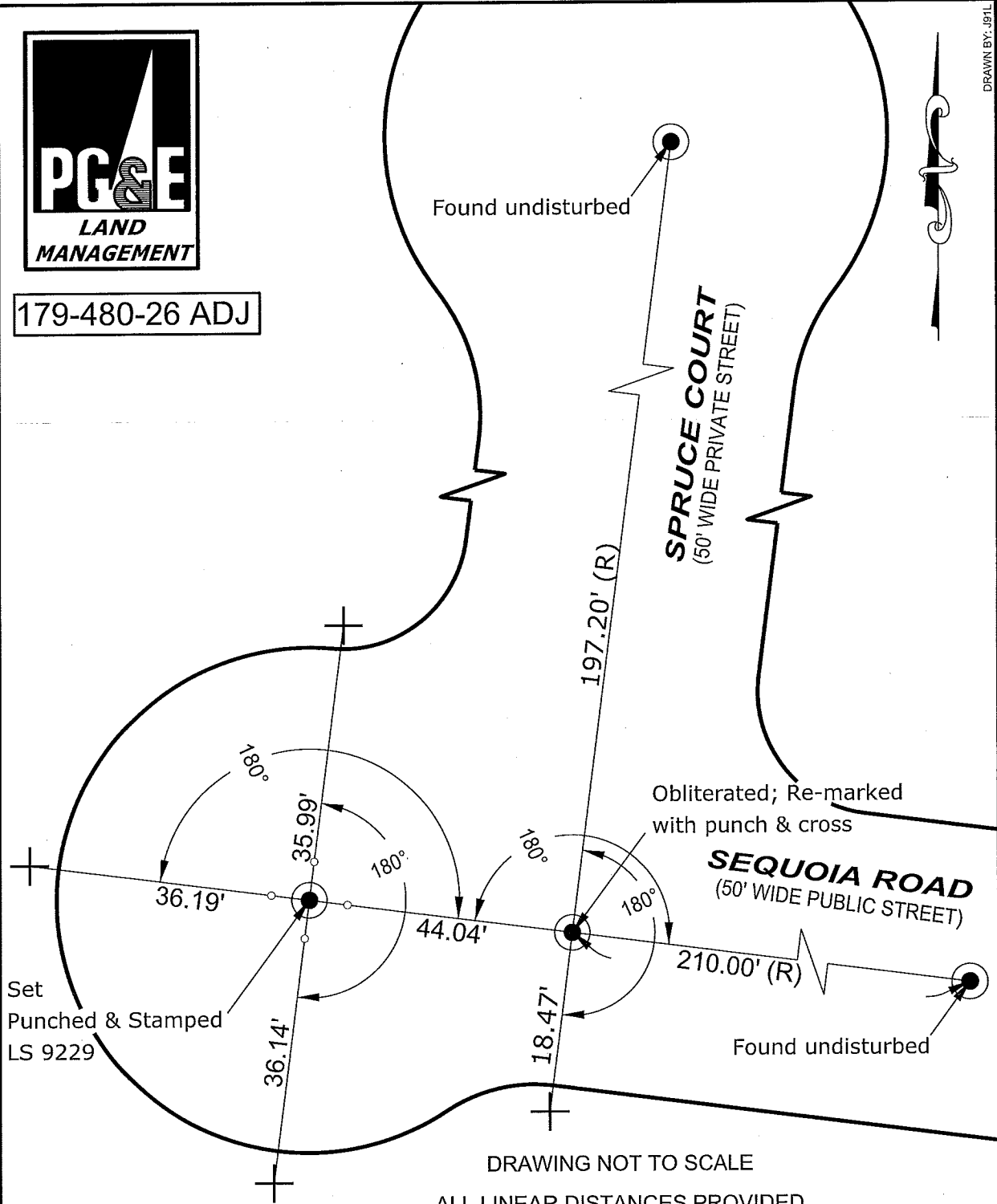
**SURVEYOR'S STATEMENT**This Corner Record was prepared by me or under my direction in conformance with  
the Professional Land Surveyor's Act on August 9, 2016Signed Justin Scroggins P.L.S. or R.C.E. No. P.L.S. 9229**COUNTY SURVEYOR'S STATEMENT**This Corner Record was received AUGUST 16, 2016  
and examined and filed OCTOBER 17, 2016Signed Richard G. Simonitch P.L.S. or R.C.E. No. 7821Title County Surveyor

County Surveyor's Comment: \_\_\_\_\_



179-480-26 ADJ

DRAWN BY: J91L



**LEGEND:**

+ FOUND CUT-CROSS IN TOP FACE OF CURB

● STANDARD CITY OF SAN RAFAEL 2.5 INCH DIAMETER BRASS CAP WITH PUNCH IN MONUMENT WELL PER (2003 MAPS 229) UNLESS NOTED OTHERWISE.

○ SET 2.00' STRADDLER MAG NAIL (TYP.)