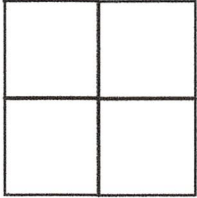


CORNER RECORD

Agency Index

20-085

Document Number

179-371-08City of Unincorporated (Vicinity of San Rafael)County of MARIN, CaliforniaBrief Legal Description Lot 22, 12-RM-20**CORNER TYPE****COORDINATES (Optional)**Government Corner ☐Control ☐☐ ElevationMeander ☐Property ☐☒ UnitsMetric ☐U.S. Survey Foot ☐Rancho ☐Other ☐☐ Horizontal Datum

Zone

Epoch Date

Vertical Datum

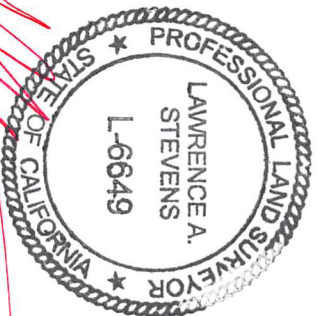
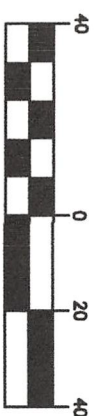
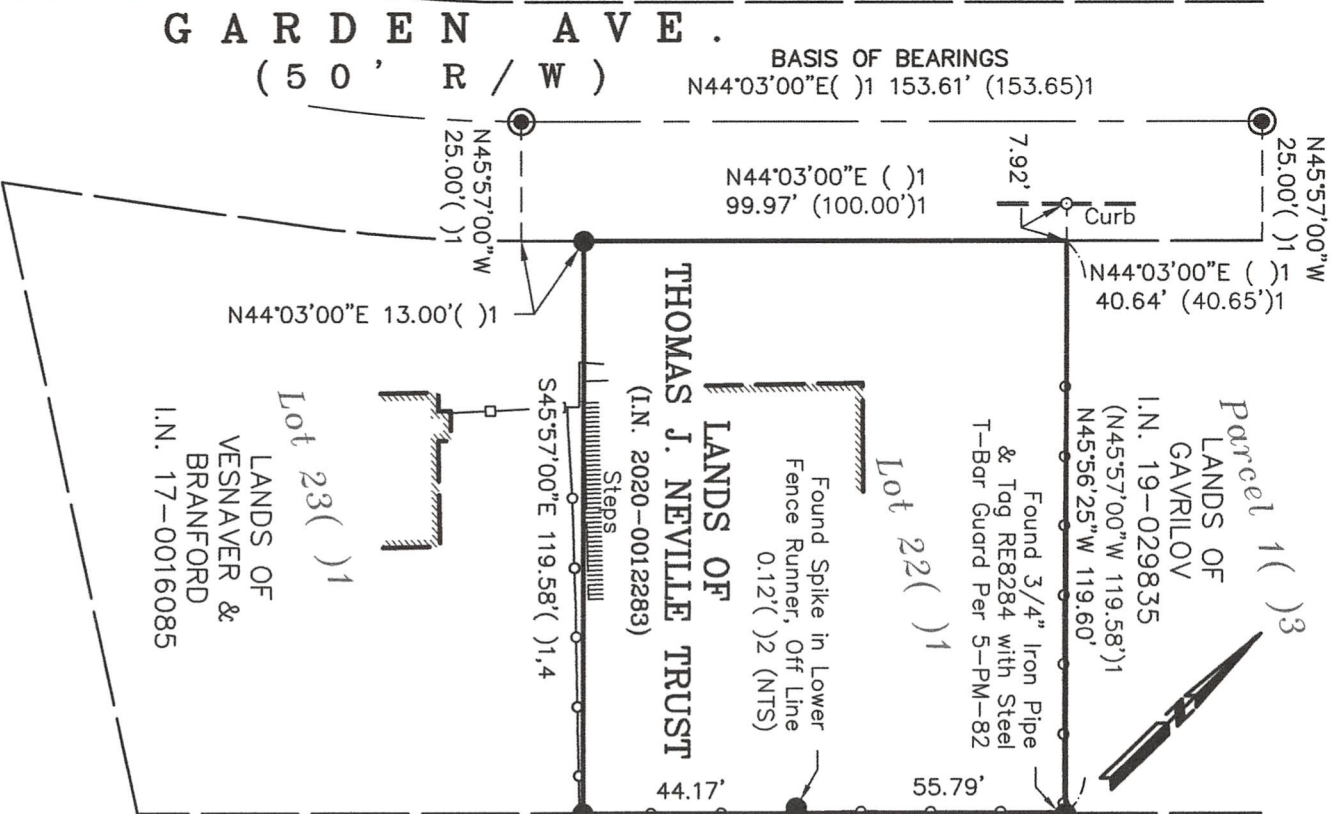
Date of Survey 11/20/2020☐ Complies with Public Resources Code §§8801-8819☐ Complies with Public Resources Code §§8890-8902PLS Act Ref: ☒ 8765(d)☐ 8771☐ 8773☐ Other:Corner/
Monument: ☐ Left as found☒ Established☐ Rebuilt☐ Pre-Construction☐ Found and tagged☐ Reestablished☐ Referenced☐ Post-Construction

Narrative of corner identified and monument as found, set, reset, replaced, or removed:

☒ See sheet #2 for description (s):**SURVEYOR'S STATEMENT**This Corner Record was prepared by me or under my direction in conformance with
the Professional Land Surveyors' Act on December 3, 2020Signed [Signature] P.L.S. or R.C.E. No. 6649**COUNTY SURVEYOR'S STATEMENT**This Corner Record was received 12/07/2020and examined and filed 01/26/2021Signed [Signature] P.L.S. or R.C.E. No. 9292Title DEPUTY C.S.

County Surveyor's Comment _____

All distances shown are in feet and decimals thereof



12-3-20

Corner Record Lands of Neville

(Lot 22, 12 RM 20)

San Rafael

Marin County

Scale: 1" = 40'

L.A. Stevens & Associates, Inc.

November, 2020

Professional Land Surveyors * (415) 382-7713
7 Commercial Blvd., Suite 1 * Novato, CA 94949

Lawrence A. Stevens, PLS 6649

Copyright © Lawrence A. Stevens 2020