



**JERRICO ASSOCIATES**  
SUITE 27  
77 MARK DRIVE  
SAN RAFAEL, CA 94903

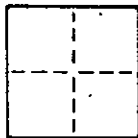
A.P. #179-311-16

6592

1/2

# CORNER RECORD

COUNTY OF Marin T. \_\_\_\_\_ R. \_\_\_\_\_ MERIDIAN \_\_\_\_\_ CALIFORNIA  
CORNER TYPE: GOV'T. CORNER ☐ MEANDER ☐ RANCHO ☐ CONTROL ☐ OTHER ☐  
CORNER IDENTIFICATION — DATE OF VISIT \_\_\_\_\_ 19\_\_\_\_



CORNER — LEFT AS FOUND ☐ FOUND AND TAGGED ☐ REESTABLISHED OBLITERATED CORNER ☐ REBUILT ☐

PHYSICAL DESCRIPTION OF CORNER FOUND; EVIDENCE AND METHOD USED TO IDENTIFY OR REESTABLISH

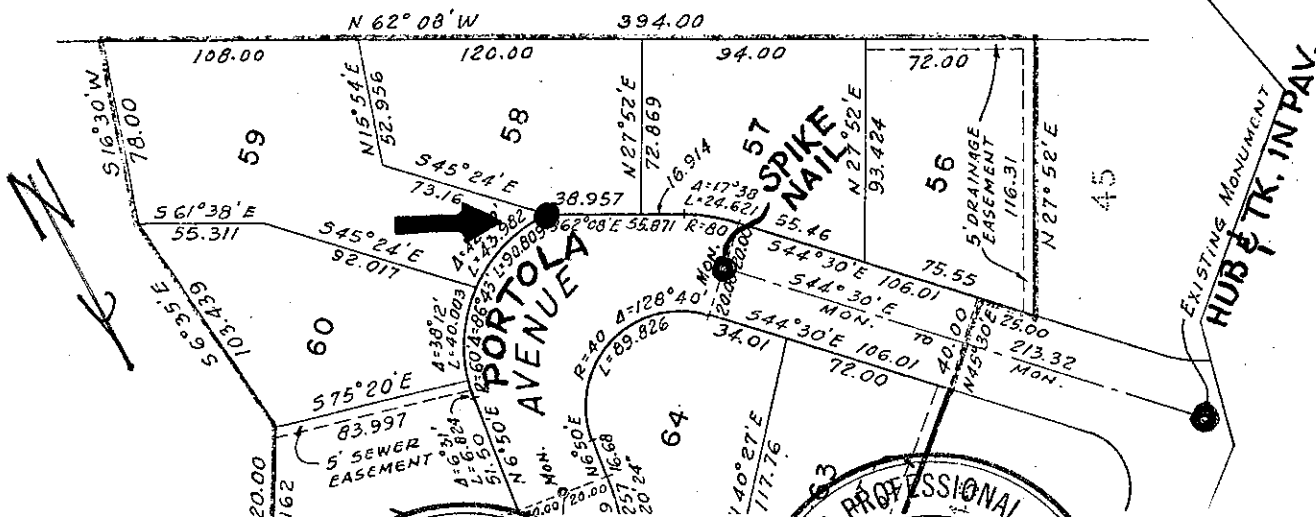
Monument ( spike nail ) establishing centerline of Portola Ave., and  
Hub and tack in pavement both found in the field: as shown.  
Lot 59 Portola Gardens Unit Three, Marin County, Ca. ( 7 R.M. 34 )

PHYSICAL DESCRIPTION OF MONUMENTS REBUILT OR PERPETUATED

Set 3/4" iron pipe and tag L.S. 3887

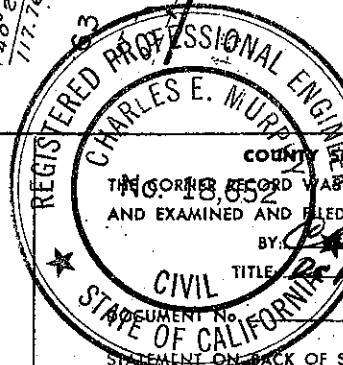
CALIFORNIA COORDINATE SYSTEM ORDER: FIRST ☐ SECOND ☐ THIRD ☐  
STATIONS USED: NGS (USC & GS) ☐ STATE ☐ COUNTY ☐ OTHER ☐ STATION \_\_\_\_\_ STATION \_\_\_\_\_  
ZONE \_\_\_\_\_ ELEVATION \_\_\_\_\_ NORTHINGS (Y) \_\_\_\_\_ EASTINGS (X) \_\_\_\_\_

SKETCH: (Include reference tie or witness points, remarks and topo of area)



**SURVEYOR'S CERTIFICATE**  
THIS CORNER RECORD WAS PREPARED BY ME OR UNDER MY  
DIRECTION IN CONFORMANCE WITH THE LAND SURVEYORS ACT  
ON December BRUNNER, JR. 1985

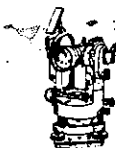
SIGNED: [Signature]  
L.S. or R.C.E. No.: 3887



**COUNTY SURVEYOR'S CERTIFICATE**  
THIS CORNER RECORD WAS RECEIVED March 28 1986  
AND EXAMINED AND FILED March 31 1986  
BY: [Signature]  
TITLE: Deputy County Surveyor  
Lic. Exa. 6-30-89

STATEMENT ON BACK OF SHEET

No



**JERRICO ASSOCIATES**

SUITE 27  
77 MARK DRIVE  
SAN RAFAEL, CA 94903

179-311-16

6592

# CORNER RECORD

2/2

COUNTY OF Marin T. \_\_\_\_\_ R. \_\_\_\_\_ MERIDIAN \_\_\_\_\_ CALIFORNIA

CORNER TYPE: GOV'T. CORNER ☐ MEANDER ☐ RANCHO ☐ CONTROL ☐ OTHER ☐

CORNER IDENTIFICATION — DATE OF VISIT \_\_\_\_\_ 19\_\_\_\_



CORNER — LEFT AS FOUND ☐ FOUND AND TAGGED ☐ REESTABLISHED OBLITERATED CORNER ☐ REBUILT ☐

PHYSICAL DESCRIPTION OF CORNER FOUND, EVIDENCE AND METHOD USED TO IDENTIFY OR REESTABLISH

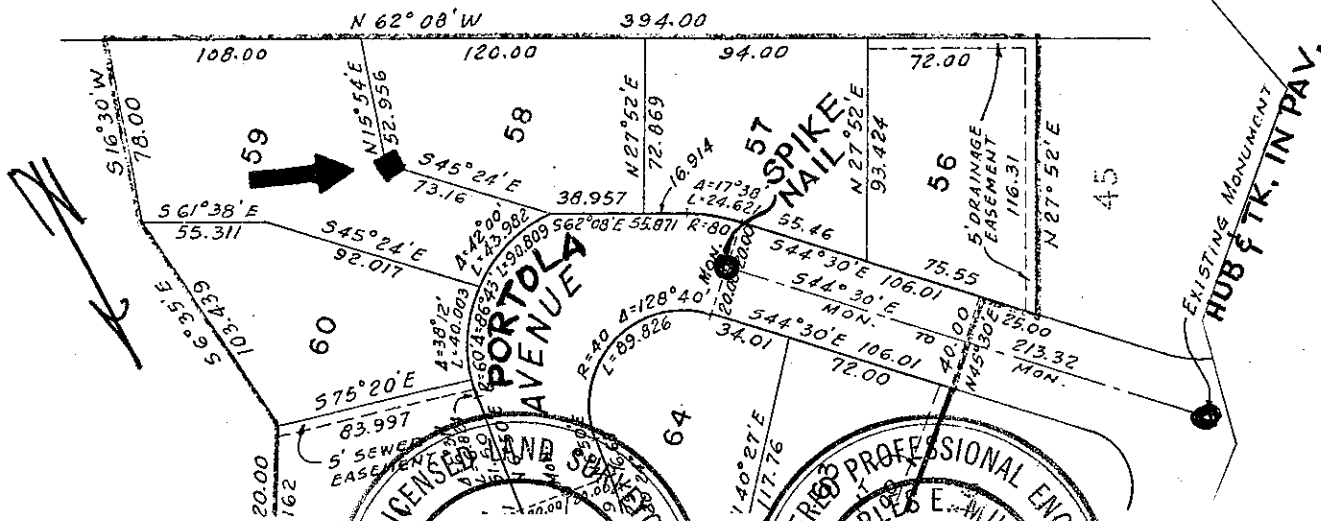
Monument ( spike nail ) establishing centerline of Portola Ave., and  
Hub and tack in pavement both found in the field: as shown.  
Lot 59 Portola Gardens Unit Three, Marin County Ca. ( 7 R.M. 34 )

PHYSICAL DESCRIPTION OF MONUMENTS REBUILT OR PERPETUATED

Set 2"x2" redwood hub and tag L.S. 3887

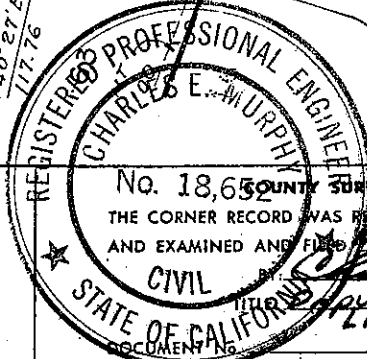
CALIFORNIA COORDINATE SYSTEM ORDER: FIRST ☐ SECOND ☐ THIRD ☐  
STATIONS USED: NGS (USC & GS) ☐ STATE ☐ COUNTY ☐ OTHER ☐ STATION \_\_\_\_\_ STATION \_\_\_\_\_  
ZONE \_\_\_\_\_ ELEVATION \_\_\_\_\_ NORTHINGS (Y) \_\_\_\_\_ EASTINGS (X) \_\_\_\_\_

SKETCH: (Include reference tie or witness points, remarks and topo of area)



SURVEYOR'S CERTIFICATE  
THIS CORNER RECORD WAS PREPARED BY ME OR UNDER MY  
DIRECTION IN CONFORMANCE WITH THE 1985 SURVEYORS' ACT  
ON December 1985

SIGNED: \_\_\_\_\_  
L.S. or R.C.E. No.: LS 3887



COUNTY SURVEYOR'S CERTIFICATE  
THE CORNER RECORD WAS RECEIVED March 28 1986  
AND EXAMINED AND FILED March 31 1986  
CIVIL Charles E. Murphy  
Deputy County Surveyor  
LIC. EXP. 6-30-89

STATEMENT ON BACK OF SHEET No