

CORNER RECORD

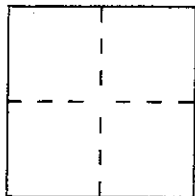
A.P. # 179-261-83

Document Number Lot A, 6 P.M. 85

City of San Rafael

County of Marin, California

Brief Legal Description 25 Rainbow Road, San Rafael



CORNER TYPE

Government Corner ☐ Control ☐
Meander ☐ Property ☒
Rancho ☐ Other ☐
Date of Survey June 1997

COORDINATES (Optional)

N. _____
E. _____
Zone _____ Datum _____
Elev. _____

Corner — Left as found ☐ Found and tagged ☐ Established ☒ Reestablished ☐ Rebuilt ☐

Identification and type of corner found: Evidence used to identify or procedure used to establish or reestablish the corner:

Found original property corners per 6 P.M. 85. (see map over)

A description of the physical condition of the monument as found and as set or reset:

Set 1/2" Rebar & Cap L.S. 5290 and Concrete Nail and Tag LS 5290 as shown on attached map. (over)

SURVEYOR'S STATEMENT

This Corner Record was prepared by me or under my direction in conformance with the Land Surveyors' Act on June 30 19 97.

Signed David Harp L.S. or R.C.E. Number LS 5290



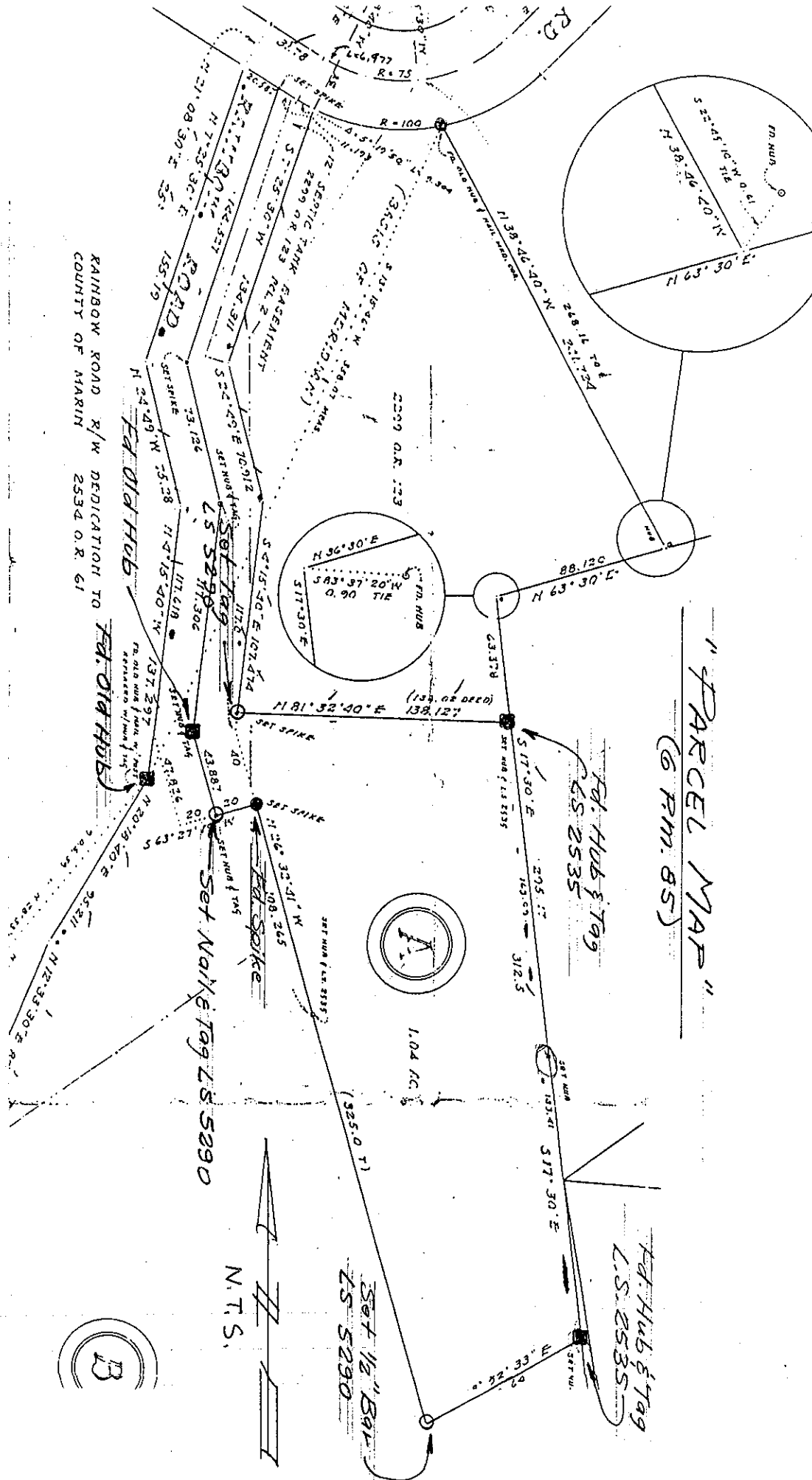
COUNTY SURVEYOR'S STATEMENT

This Corner Record was received JULY 2 19 97 and examined and filed JULY 2 19 97.

Signed John M. Wooley Title Deputy



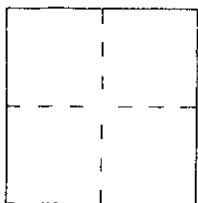
County Surveyor's Comment



CORNER RECORD

Document Number A.P.# 179-261-83
 City of SAN RAFAEL County of MARIN, California

Brief Legal Description _____



CORNER TYPE

Government Corner ☐ Control ☐
 Meander ☐ Property ☒
 Rancho ☐ Other ☐
 Date of Survey 5-20-99

COORDINATES (Optional)

N. _____
 E. _____
 Zone _____ Datum _____
 Elev. _____

Corner — Left as found ☐ Found and tagged ☐ Established ☐ Reestablished ☒ Rebuilt ☐

Identification and type of corner found: Evidence used to identify or procedure used to establish or reestablish the corner:

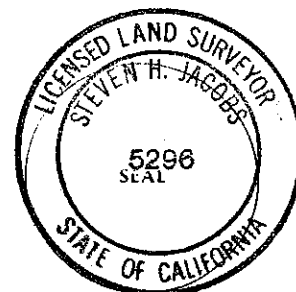
FOUND ORIGINAL 6 PM 85 MONUMENTS AS SHOWN ON
REVERSE, ESTABLISHED POINTS ACCORDINGLY.

A description of the physical condition of the monument as found and as set or reset: SET MAGNETIC
NAIL & TAG IN A.C. PAVEMENT AND 3/4" IRON PIPE
TAGGED PLS 5296 AS SHOWN ON REVERSE

SURVEYOR'S STATEMENT

This Corner Record was prepared by me or under my direction in conformance with
 the Land Surveyors' Act on 5-22- 1999.

Signed [Signature] L.S. or R.C.E. Number PLS 5296

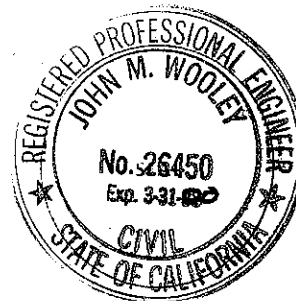


COUNTY SURVEYOR'S STATEMENT

This Corner Record was received JUNE 16 1999 and examined

and filed JUNE 18 1999.

Signed [Signature] Title DEPUTY



County Surveyor's Comment _____

HELP PT. A' TO PT. B' AS S17°37'46" E AS CALCULATED
PER 6 PM 85. SURVEYOR NOTES MINOR INCONSISTENCIES
WITH FND. NAIL & TAGS, LS 5290, NOT DEEMED
SUFFICIENT TO CONSIDER MATERIAL DISCREPANCIES.

SEE 6 PM 85

DRIVE I.P. THROUGH
ROTTED HUB

