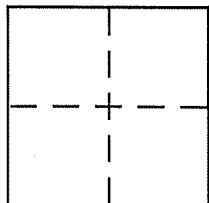


CORNER RECORD

Document Number 179-241/242
City of VICINITY OF LOS RANCHITOS County of MARIN, California

Brief Legal Description PORTION OF 2 O.S. 116



CORNER TYPE

Government Corner ☐ Control ☐
Meander ☐ Property ☒
Rancho ☐ Other ☐
Date of Survey APRIL 4, 2005

COORDINATES (Optional)

N. _____
E. _____
Zone _____ NAD27 ☐ NAD83 ☐
NAD83 Epoch _____
Elev. _____
Vert. Datum: NGVD29 ☐ NAVD88 ☐
Meas. Units: Metric ☐ Imperial ☐

Corner - Left as found ☒ Found and tagged ☐ Established ☐ Reestablished ☐ Rebuilt ☐

Identification and type of corner found: Evidence used to identify or procedure used to establish or reestablish the corner:

3/4" IRON PIPE WITH TAG RCE 3230 (HAS STRADDLERS) -
SET STANDARD MONUMENT CASING TO PROTECT IT.
PIPE IS ACCEPTED FOR POSITION ON 2005 MAPS 161.
THIS WAS A JOINT EFFORT OF MARIN C.L.S.A. &
MARIN COUNTY ROAD CREW. (SEE OVER)

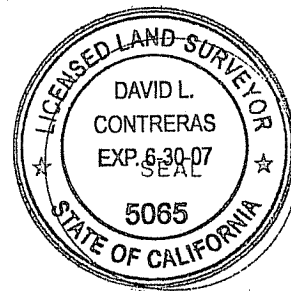
A description of the physical condition of the monument as found and as set or reset: _____

SURVEYOR'S STATEMENT

This Corner Record was prepared by me or under my direction in conformance with

the Land Surveyor's Act on APRIL 10 & JUNE 25, 2005

Signed David Contreras P.L.S. or R.C.E. No. 5065



COUNTY SURVEYOR'S STATEMENT

This Corner Record was received JUNE 28, 2005

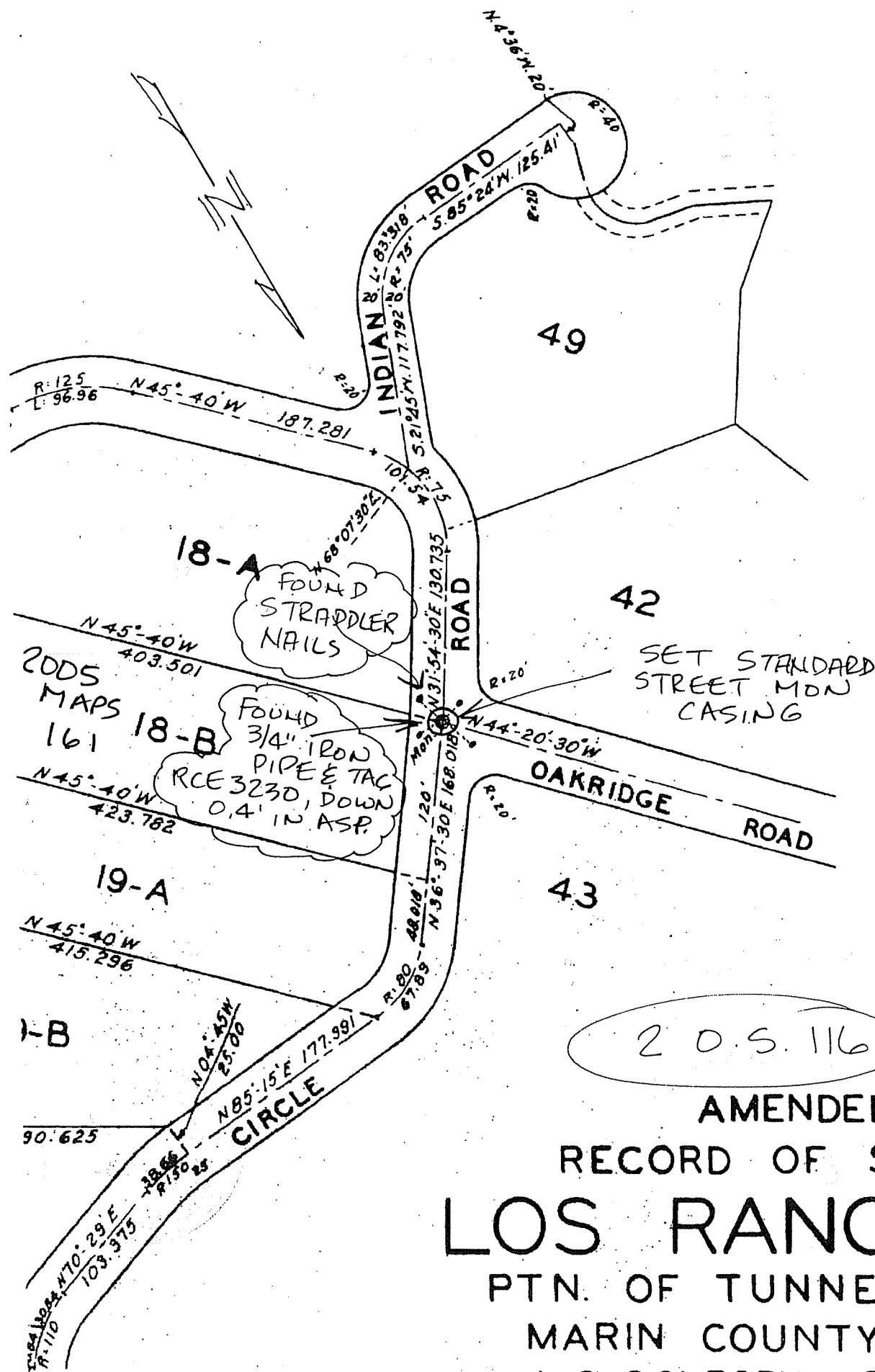
and examined and filed JULY 27, 2005

Signed [Signature] P.L.S. or R.C.E. No. 7128

Title COUNTY SURVEYOR

County Surveyor's Comment _____





205.116

AMENDED
 RECORD OF SURVEY
LOS RANCHITOS
 PTN. OF TUNNEL RANCH
 MARIN COUNTY, CALIF.
 J. C. OGLESBY. REG'D. C. E.
 SCALE: 1"=100'
 JULY 1947.