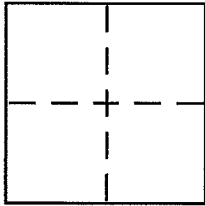


# CORNER RECORD

Document Number APN: 179-232-07City of San Rafael

County of \_\_\_\_\_, California

Brief Legal Description Per 2000 RS 015

## CORNER TYPE

Government Corner ☐ Control ☐  
Meander ☐ Property ☒  
Rancho ☐ Other ☐  
Date of Survey 1-6-11

## COORDINATES (Optional)

N. \_\_\_\_\_  
E. \_\_\_\_\_  
Zone \_\_\_\_\_ NAD27 ☐ NAD83 ☐  
NAD83 Epoch \_\_\_\_\_  
Elev. \_\_\_\_\_  
Vert. Datum: NGVD29 ☐ NAVD88 ☐  
Meas. Units: Metric ☐ Imperial ☐

Corner - Left as found ☐ Found and tagged ☐ Established ☐ Reestablished ☐ Rebuilt ☐

Identification and type of corner found: Evidence used to identify or procedure used to establish or reestablish the corner:

See page 2 of 2.

A description of the physical condition of the monument as found and as set or reset:

See page 2 of 2.

## SURVEYOR'S STATEMENT

This Corner Record was prepared by me or under my direction in conformance with the Land Surveyor's Act on 2/22/13

Signed [Signature] P.L.S or R.C.E. No. 6784



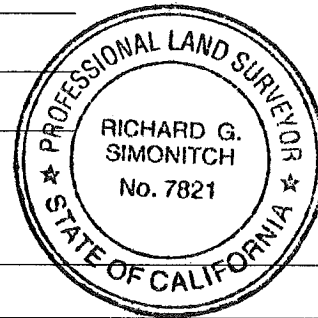
## COUNTY SURVEYOR'S STATEMENT

This Corner Record was received 1-16-2013

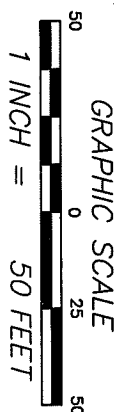
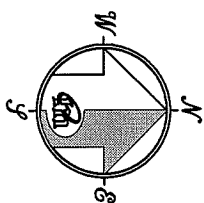
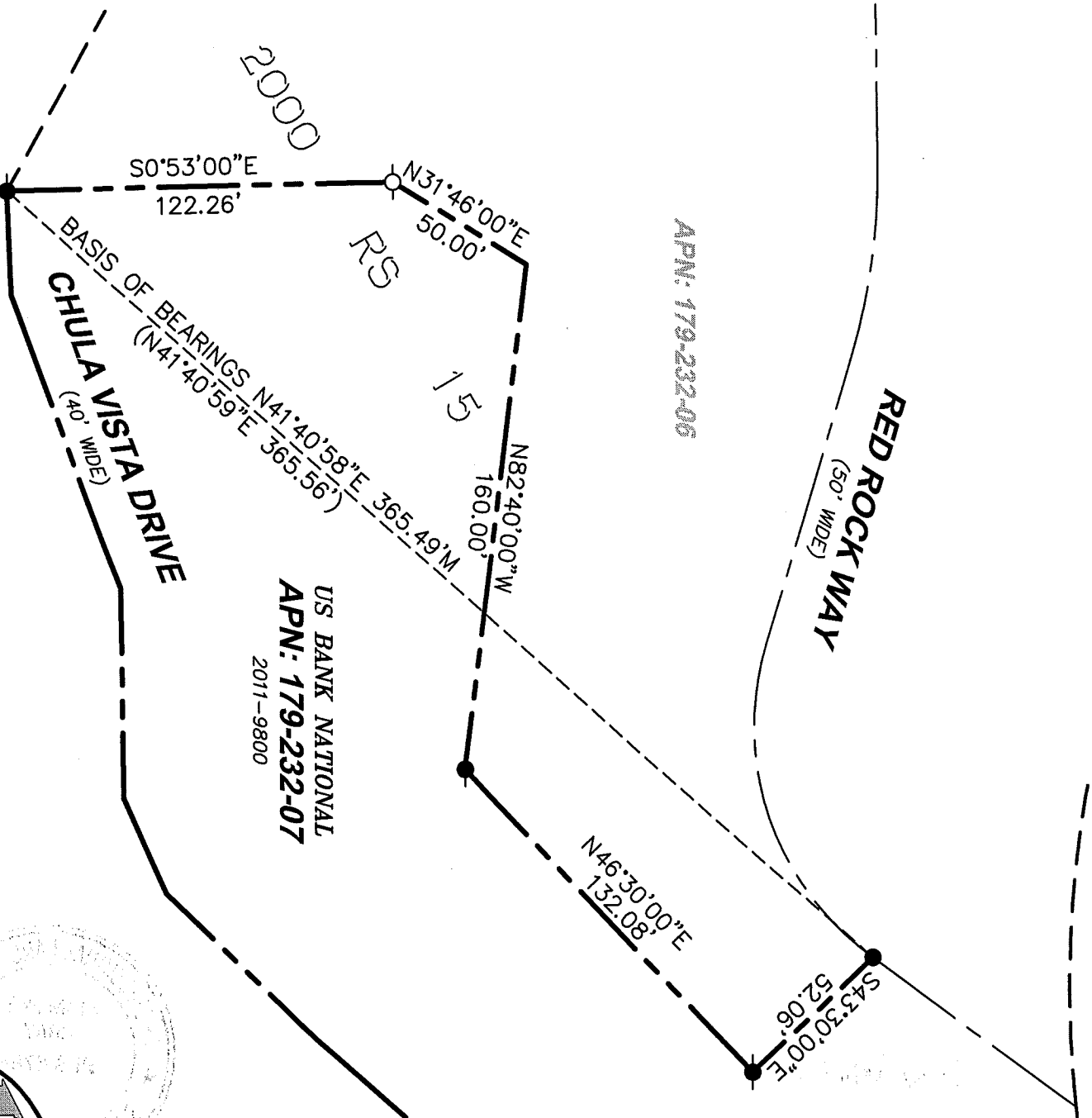
and examined and filed 2-26-2013

Signed [Signature] P.L.S or R.C.E. No. 7821

Title DEPUTY COUNTY SURVEYOR



County Surveyor's Comment \_\_\_\_\_



## REFERENCE

"RECORD OF SURVEY" FILED FOR RECORD JANUARY 4, 2000 IN BOOK 2000 OF MAPS, AT PAGE 015, MARIN COUNTY RECORDS.

## LEGEND

- FOUND REBAR WITH CAP, LS 3887,
- FOUND CITY MONUMENT
- SET 5/8" REBAR WITH CAP, PLS 6784

NOTE  
RECORD=MEASURED

CORNER RECORD

**IN MERIDIAN SURVEYING, INC.**  
 2958 VAN NESS AVENUE  
 SAN FRANCISCO, CA 94109  
 (415) 440-4131  
 11119  
 777 GRAND AVENUE, SUITE 202  
 SAN RAFAEL, CA 94901  
 (415) 456-5450  
 info@meridiansurvey.com