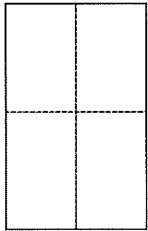


# CORNER RECORD

Document Number 179-191-01

City of San Rafael County of Marin, California

Brief Legal Description Lot 35, Los Ranchitos, Book 2 Official Surveys, Page 116



## CORNER TYPE

Government Corner ☐ Control ☐  
Meaneder ☐ Property ☒  
Rancho ☐ Other ☐  
Date of Survey 8/22/13

## COORDINATES (Optional)

N. \_\_\_\_\_  
E. \_\_\_\_\_  
Zone \_\_\_\_\_ NAD27 ☐ NAD83 ☐  
NAD83 Epoch \_\_\_\_\_  
Elev. \_\_\_\_\_  
Vert. Datum: NGVD29 ☐ NAVD88 ☐  
Meas. Units: Metric ☐ Imperial ☐

Corner – Left as found ☐ Found and tagged ☐ Established ☒ Reestablished ☐ Rebuilt ☐

Identification and type of corner found: Evidence used to identify or procedure used to establish or reestablish the corner:

Centerline monuments along Knoll Way were found in record position and  
used to reestablish the Location of Lot 35, 2 O.S. 116

A description of the physical condition of the monument as found and as set or reset: set 1/2" iron pipes, LS 7237

## SURVEYOR'S STATEMENT

This Corner Record was prepared by me or under my direction in conformance with  
the Land Surveyor's Act on AUG. 20, 2013

Signed Michael E. Ford P.L.S. or R.C.E. No. 7237



## COUNTY SURVEYOR'S STATEMENT

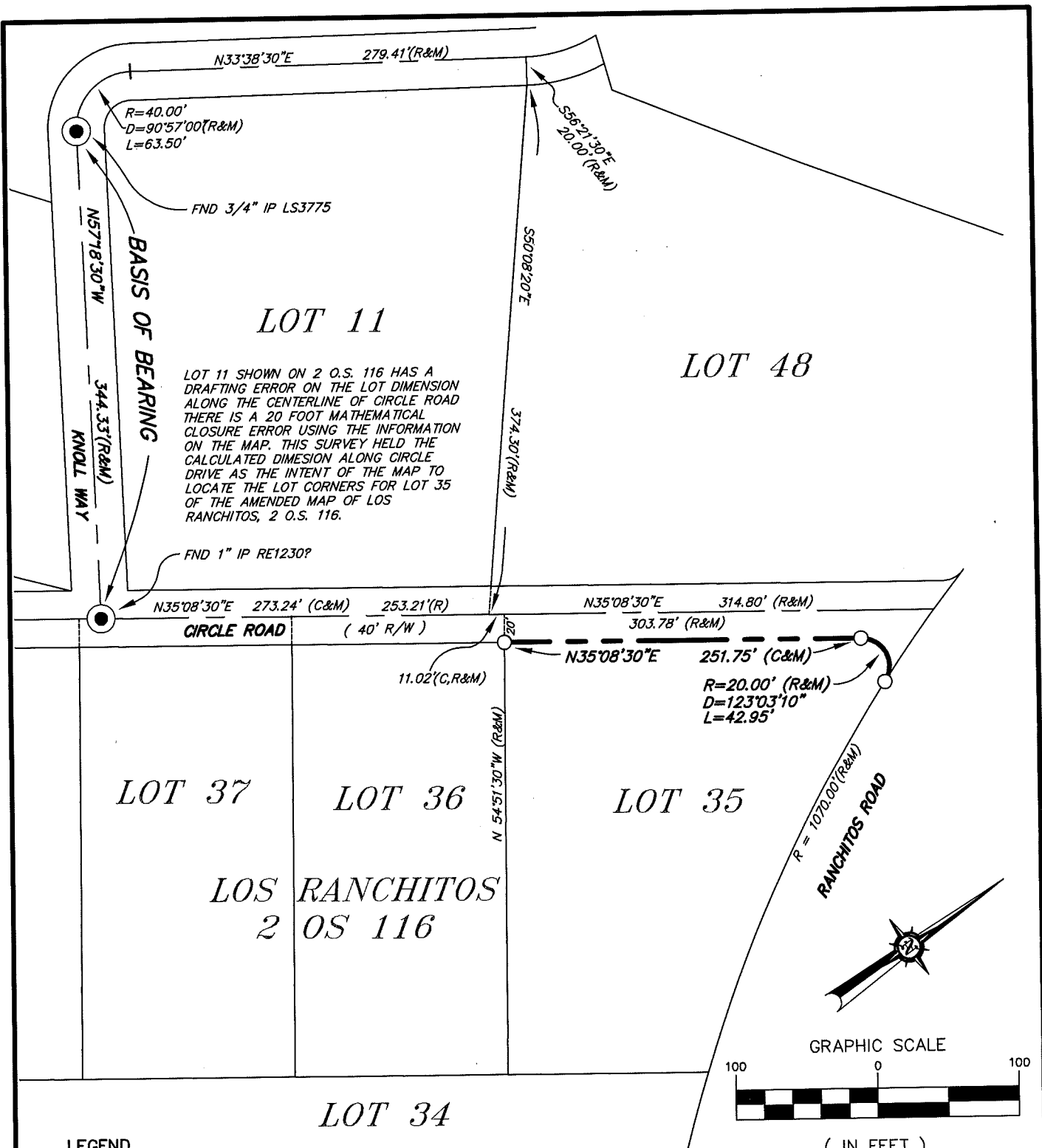
This Corner Record was received AUGUST 28, 2013  
and examined and filed OCTOBER 14, 2013

Signed Richard G. Simonitch P.L.S. or R.C.E. No. 7821

Title DEPUTY CO. SURV



County Surveyor's Comment



**michael ford inc.**  
**land surveying**

2300 bethards drive, suite J  
santa rosa, california 95405  
p 707.542.8513 - f 707.542.1825  
www.michaelfordinc.com