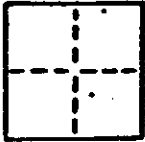


CORNER RECORD

COUNTY OF MARIN T. 1 S. 1 E. MERIDIAN CALIFORNIA
 CORNER TYPE: GOVT. CORNER ☐ MEANDER ☐ RANCHO ☐ CONTROL ☐ OTHER ☒
 CORNER IDENTIFICATION — DATE OF VISIT FEBRUARY 19 89



CORNER — LEFT AS FOUND ☐ FOUND AND TAGGED ☐ REESTABLISHED OBLITERATED CORNER ☐ RESULT ☒

PHYSICAL DESCRIPTION OF CORNER FOUND; EVIDENCE AND METHOD USED TO IDENTIFY OR REESTABLISH

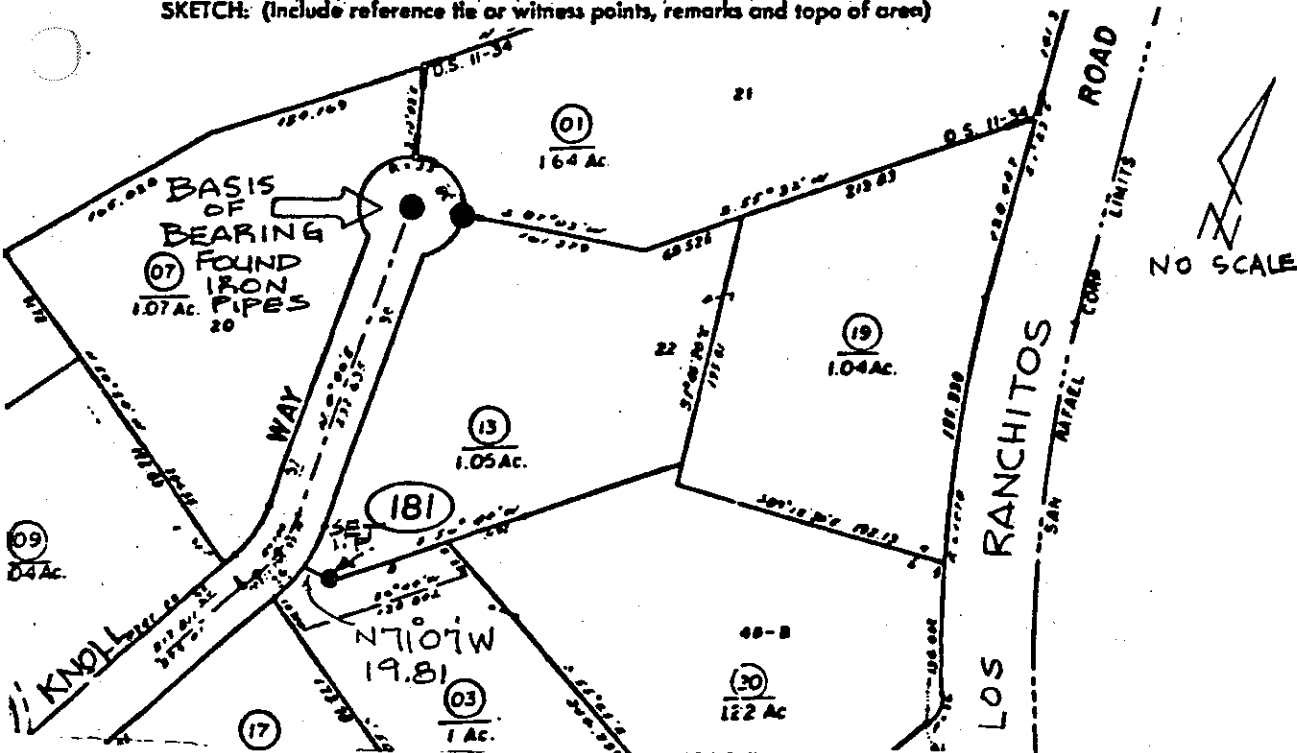
BASIS OF BEARING IS N 87° 03' E BETWEEN FOUND IRON PIPES
 AS SHOWN ON BOOK 11 R.O.S. PAGE 34

PHYSICAL DESCRIPTION OF MONUMENTS RESULT OR PERPETUATED

SET IRON PIPE AND PLUG

CALIFORNIA COORDINATE SYSTEM ORDER: FIRST ☐ SECOND ☐ THIRD ☐
 STATIONS USED: NGS (USC & GS) ☐ STATE ☐ COUNTY ☐ OTHER ☒ STATION _____ STATION _____
 ZONE _____ ELEVATION _____ NORTHINGS (Y) _____ EASTINGS (X) _____

SKETCH: (Include reference tie or witness points, remarks and topo of area)



SURVEYOR'S CERTIFICATE

THIS CORNER RECORD WAS PREPARED BY ME OR UNDER MY
 DIRECTION IN CONFORMANCE WITH THE LAND SURVEYORS ACT

SIGNED: W. Edward Nute
 No. 15945
 Exp. 6/30/89

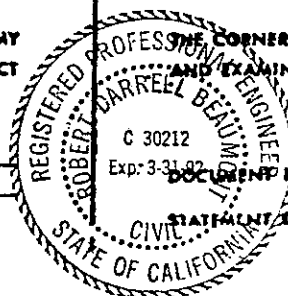
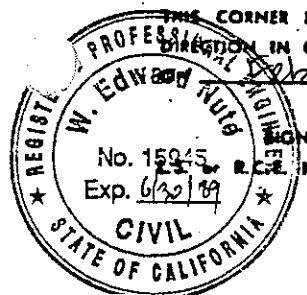
COUNTY SURVEYOR'S CERTIFICATE

THIS CORNER RECORD WAS RECEIVED 2/23 19 89
 AND EXAMINED AND FILED 2/24 19 89

BY: PDR
 TITLE: DES

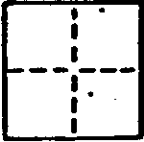
STATEMENT ON BACK OF SHEET

YES ☐ NO ☒



CORNER RECORD

2 OF 2

COUNTY OF MARIN T. R. MERIDIAN CALIFORNIACORNER TYPE: GOVT. CORNER ☐ MEANDER ☐ RANCHO ☐ CONTROL ☐ OTHER ☒CORNER IDENTIFICATION — DATE OF VISIT FEBRUARY 19 89CORNER — LEFT AS FOUND ☐ FOUND AND TAGGED ☐ REESTABLISHED OBLITERATED CORNER ☐ RESULT ☒

PHYSICAL DESCRIPTION OF CORNER FOUND, EVIDENCE AND METHOD USED TO IDENTIFY OR REESTABLISH

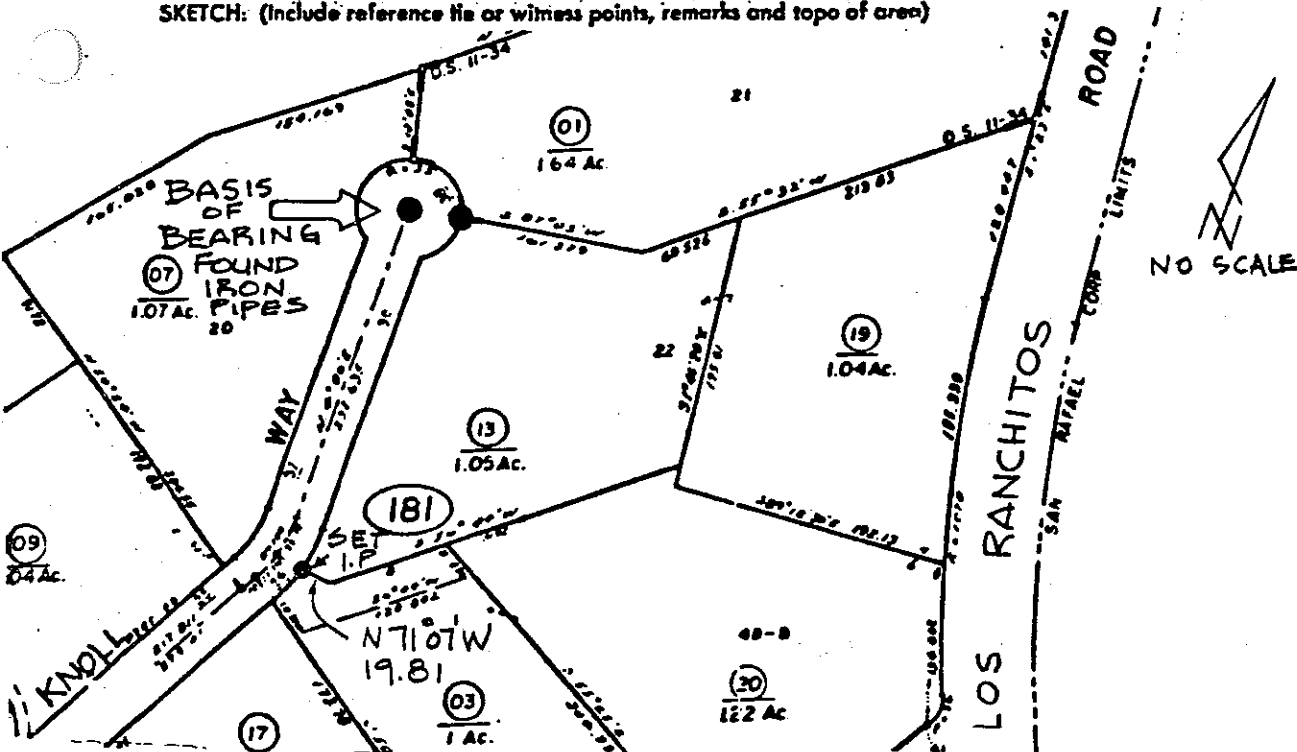
BASIS OF BEARING IS N 87° 03' E BETWEEN FOUND IRON PIPES
AS SHOWN ON BOOK 11 R.O.S. PAGE 34

PHYSICAL DESCRIPTION OF MONUMENTS RESULT OR PERPETUATED

SET IRON PIPE AND PLUG

CALIFORNIA COORDINATE SYSTEM ORDER: FIRST ☐ SECOND ☐ THIRD ☐
STATIONS USED: NGS (USC & GS) ☐ STATE ☐ COUNTY ☐ OTHER ☒ STATION STATION
ZONE ELEVATION NORTHINGS (Y) EASTINGS (X)

SKETCH: (Include reference line or witness points, remarks and topo of area)



SURVEYOR'S CERTIFICATE

THIS CORNER RECORD WAS PREPARED BY ME OR UNDER MY DIRECTION IN CONFORMANCE WITH THE LAND SURVEYORS ACT

SIGNED: W. Edward Nute
No. 15,945

COUNTY SURVEYOR'S CERTIFICATE

THE CORNER RECORD WAS RECEIVED 2/23 19 89
AND EXAMINED AND FILED 2/24 19 89

BY: DRB
TITLE: DRS

C 30212
Exp. 3-31-92
DOCUMENT NO.

STATEMENT ON BACK OF SHEET

YES ☐ NO ☒