

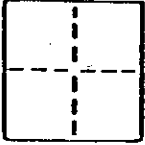
# CORNER RECORD

A.P. #179-103-14

COUNTY OF MARIN T. 1 S. 1 E. SEC. 8 M.D.B. 8 MERIDIAN CALIFORNIA

CORNER TYPE: GOVT. CORNER ☐ MEANDER ☐ RANCHO ☐ CONTROL ☐ OTHER ☒

CORNER IDENTIFICATION - DATE OF VISIT November 1, 1988



LOT 90, 7 MAPS 11, MARIN COUNTY

1 of 2

CORNER - LEFT AS FOUND ☐ FOUND AND TAGGED ☐ REESTABLISHED OBLITERATED CORNER ☐ RESULT ☐

PHYSICAL DESCRIPTION OF CORNER FOUND; EVIDENCE AND METHOD USED TO IDENTIFY OR REESTABLISH

Monuments of record shown in Corrillo Drive per 7 maps 11 and 7 maps 20 have been replaced with Railroad spikes. Distance checks and occupational line analysis prove said railroad spikes to be in there proper place.

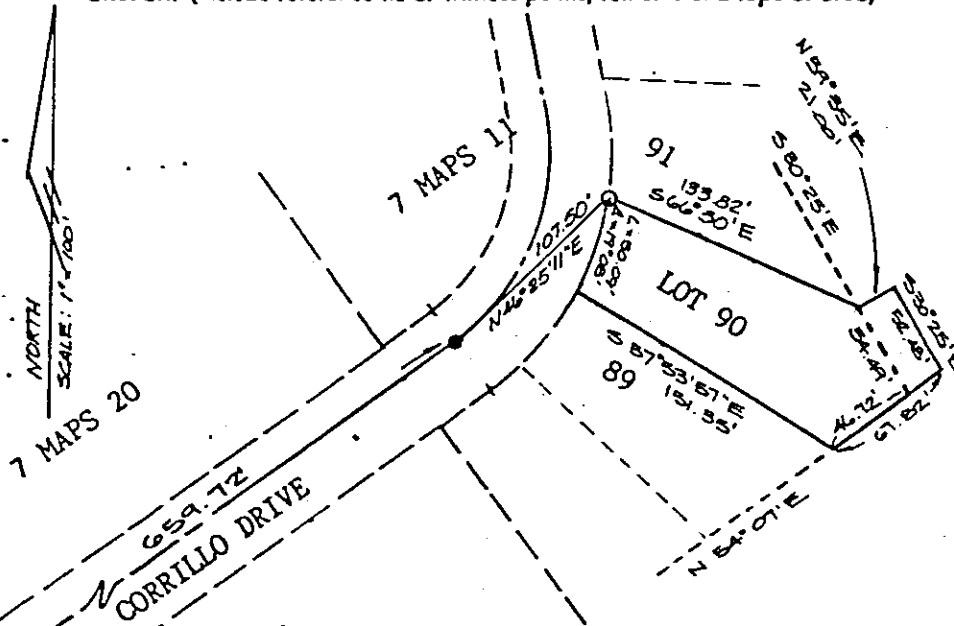
AP# 179-103-14

PHYSICAL DESCRIPTION OF MONUMENTS REBUILT OR PERPETUATED

See above

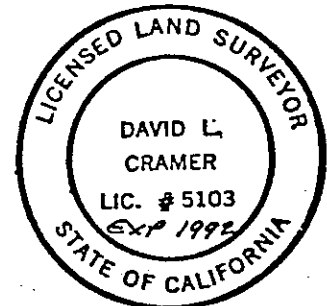
CALIFORNIA COORDINATE SYSTEM ORDER: FIRST ☐ SECOND ☐ THIRD ☐  
STATIONS USED: NGS (USC & GS) ☐ STATE ☐ COUNTY ☐ OTHER ☐ STATION \_\_\_\_\_ STATION \_\_\_\_\_  
ZONE \_\_\_\_\_ ELEVATION \_\_\_\_\_ NORTHINGS (N) \_\_\_\_\_ EASTINGS (E) \_\_\_\_\_

SKETCH: (Include reference tie or witness points, remarks and topo of area)



## LEGEND

- SET 3/4" IRON PIPE TAGGED L.S. 5103.
- SET 2"X2" HUB AND TACK ON PROP. LINE.
- FOUND RAILROAD SPIKE.



## SURVEYOR'S CERTIFICATE

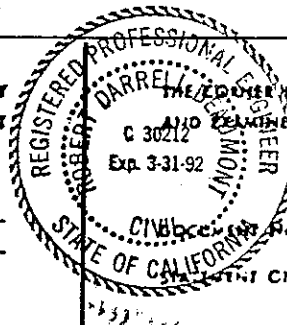
THIS CORNER RECORD WAS PREPARED BY ME OR UNDER MY DIRECTION IN CONFORMANCE WITH THE LAND SURVEYORS ACT ON DECEMBER 6, 1988

SIGNED: [Signature] L.S. 5103

LS - F.C.E. No. \_\_\_\_\_

## COUNTY SURVEYOR'S CERTIFICATE

THIS CORNER RECORD WAS RECEIVED 2/16, 1989  
AND EXAMINED AND FILED 2/16, 1989  
BY: [Signature]  
TITLE: DCS



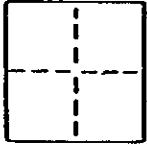
SEAL

SEE LAST CIL BACK OF SHEET

YES ☐ NO ☒

## CORNER RECORD

A.P. # 179-103-14

COUNTY OF MARIN T. 1 S. 1 SEC. 8 M. D. B. 8 MERIDIAN CALIFORNIACORNER TYPE: GOV'T. CORNER ☐ MEANDER ☐ RANCHO ☐ CONTROL ☐ OTHER ☒CORNER IDENTIFICATION — DATE OF VISIT November 1, 1988

LOT 90, 7 MAPS 11, MARIN COUNTY

2 of 2

CORNER — LEFT AS FOUND ☐ FOUND AND TAGGED ☐ REESTABLISHED OBLITERATED CORNER ☐ RESULT ☐

PHYSICAL DESCRIPTION OF CORNER FOUND; EVIDENCE AND METHOD USED TO IDENTIFY OR REESTABLISH

Monuments of record shown in Corrillo Drive per 7 maps 11 and 7 maps 20 have been replaced with Railroad spikes. Distance checks and occupational line analysis prove said railroad spikes to be in there proper place.

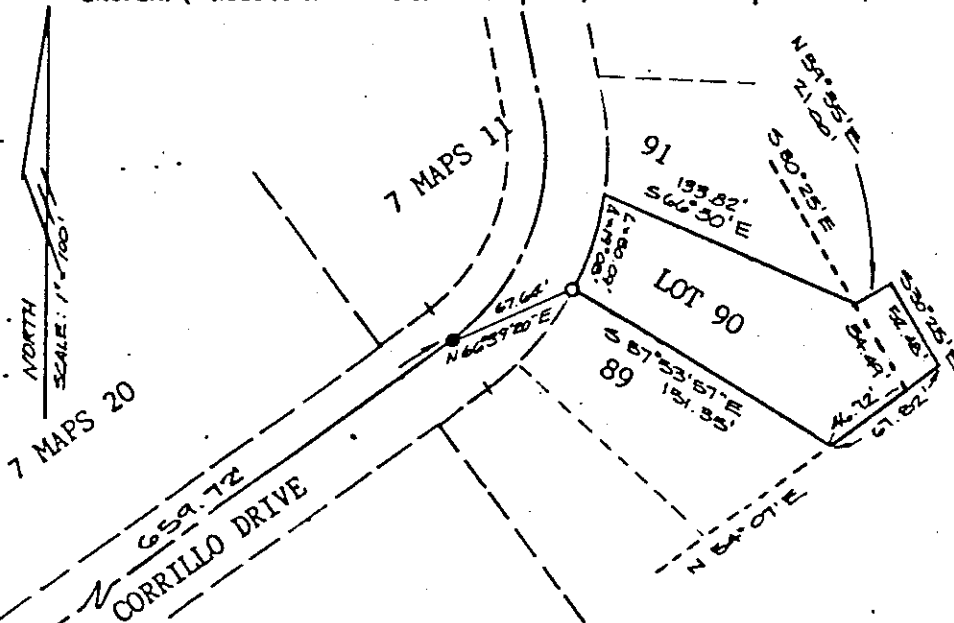
AP# 179-103-14

PHYSICAL DESCRIPTION OF MONUMENTS REBUILT OR PERPETUATED

See above

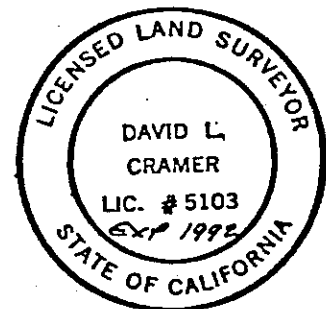
CALIFORNIA COORDINATE SYSTEM ORDER: FIRST ☐ SECOND ☐ THIRD ☐  
 STATIONS USED: NGS (USC & GS) ☐ STATE ☐ COUNTY ☐ OTHER ☐ STATION \_\_\_\_\_ STATION \_\_\_\_\_  
 ZONE \_\_\_\_\_ ELEVATION \_\_\_\_\_ NORTHINGS (Y) \_\_\_\_\_ EASTINGS (X) \_\_\_\_\_

SKETCH: (Include reference tie or witness points, remarks and topo of area)



## LEGEND

- SET 3/4" IRON PIPE TAGGED L.S. 5103.
- SET 2"X 2" HUB AND TACK ON PROP. LINE.
- FOUND RAILROAD SPIKE.



## SURVEYOR'S CERTIFICATE

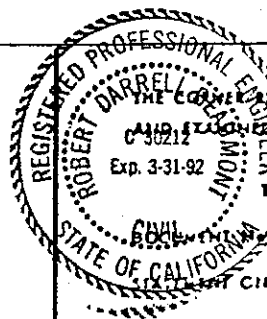
THIS CORNER RECORD WAS PREPARED BY ME OR UNDER MY DIRECTION IN CONFORMANCE WITH THE LAND SURVEYORS ACT ON DECEMBER 6, 1988

SIGNED: David L. Cramer

L.S. 5103

L.S. or R.C.L. No. \_\_\_\_\_

SEAL



## COUNTY SURVEYOR'S CERTIFICATE

THE CORNER RECORD WAS RECEIVED 2/16, 1989  
 AND EXAMINED AND FILED 2/16, 1989  
 BY: PLB  
 TITLE: D-8

SEE BACK OF SHEET

YES ☐NO ☒