

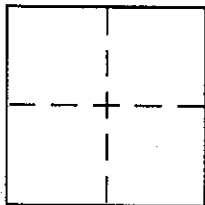
CORNER RECORD

Document Number A.P.N. 178 - 240-20

City of SAN RAFAEL

County of MARIN, California

Brief Legal Description PARCEL 2 PER 13 P.M.57



CORNER TYPE

Government Corner Control
Meander Property
Rancho Other
Date of Survey 4-1-03

COORDINATES (Optional)

N. _____
E. _____
Zone _____ NAD27 NAD83
NAD83 Epoch _____
Elev. _____
Vert. Datum: NGVD29 NAVD88
Meas. Units: Metric Imperial

Corner - Left as found Found and tagged Established Reestablished Rebuilt

Identification and type of corner found: Evidence used to identify or procedure used to establish or reestablish the corner:

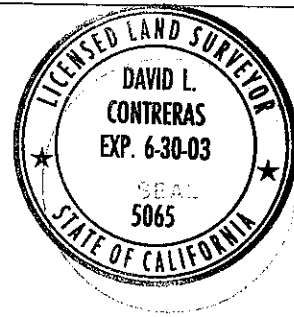
=SEE OVER =

A description of the physical condition of the monument as found and as set or reset:

=SEE OVER =

SURVEYOR'S STATEMENT

This Corner Record was prepared by me or under my direction in conformance with the Land Surveyor's Act on APRIL 20 2003
Signed David Contreras P.L.S. or R.C.E. No. 5065

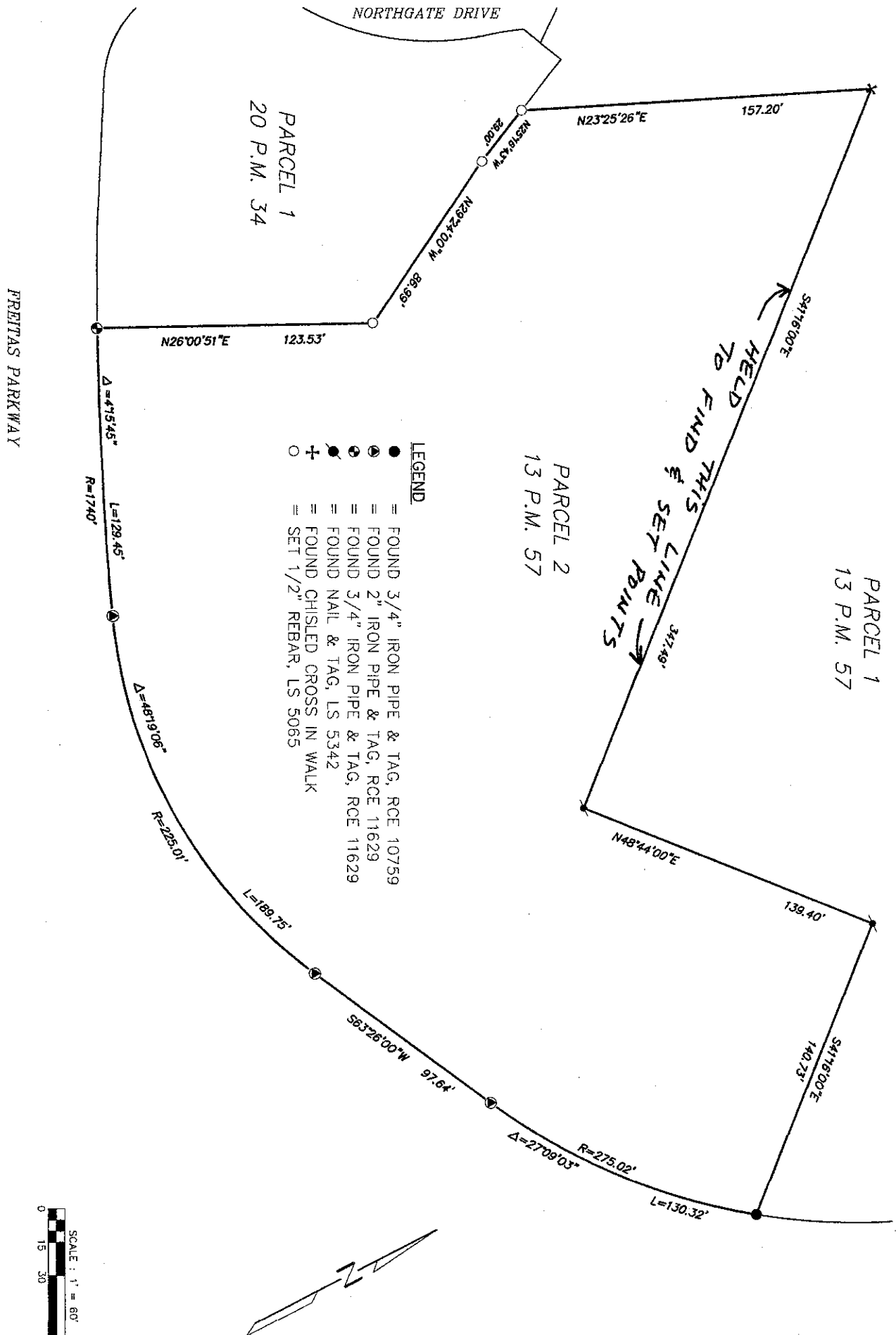


COUNTY SURVEYOR'S STATEMENT

This Corner Record was received APRIL 22, 2003
and examined and filed APRIL 23, 2003
Signed _____ P.L.S. or R.C.E. No. 7128
Title COUNTY SURVEYOR



County Surveyor's Comment _____



U.S. HIGHWAY 101