

# CORNER RECORD

Agency Index

DPW#18-064

Document Number

178-221-76

City of San Rafael

County of

Marin

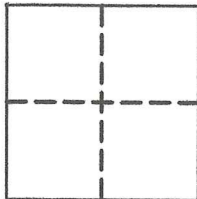
, California

Brief Legal Description

Lot 6, per "Map of Terra Linda Terrace", filed in 14 RM 48, Marin County Records

### CORNER TYPE

### COORDINATES (Optional)



Government Corner

Control

N. \_\_\_\_\_

E. \_\_\_\_\_

Elevation

Meander

Property

Units

Metric

U.S. Survey Foot

Rancho

Other

Horizontal Datum

Zone \_\_\_\_\_

Epoch Date \_\_\_\_\_

Vertical Datum \_\_\_\_\_

Date of Survey 08/24/2018

Complies with Public Resources Code §§8801-8819

Complies with Public Resources Code §§8890-8902

PLS Act Ref:

8765(d)

8771

8773

Other:

Corner/

Left as found

Established

Rebuilt

Pre-Construction

Monument:

Found and tagged

Reestablished

Referenced

Post-Construction

Narrative of corner identified and monument as found, set, reset, replaced, or removed:

See sheet #2 for description (s):

### SURVEYOR'S STATEMENT

This Corner Record was prepared by me or under my direction in conformance with the Professional Land Surveyors' Act on October 3, 2018

Signed [Signature] P.L.S. or R.C.E. No. 6649



### COUNTY SURVEYOR'S STATEMENT

This Corner Record was received OCTOBER 10, 2018

and examined and filed JAN 13, 2019

Signed [Signature] P.L.S. or R.C.E. No. \_\_\_\_\_

Title DEPUTY C.S.



County Surveyor's Comment \_\_\_\_\_

All distances shown are in feet and decimals thereof



LANDS OF ALIOTO  
(IN 87-13239)

MAHOGANY DRIVE

LANDS OF JOHNSEN  
(2453 OR 490)

LANDS OF BELMAN  
(I.N. 87-13239)

LANDS OF SILVESTRI  
(IN 97-27159)

LANDS OF MARIN COUNTY  
OPEN SPACE DISTRICT  
(IN 93-3369)

2005 M 071 ( )  
Lot 6

**LEGEND**

● Found 3/4" Iron Pipe & Plastic Plug Stamped "LS 6649" ( )1, U.N.O.

○ Set 5/8" Rebar & Punched Aluminum Cap, Stamped "LA STEVENS PLS 6649"

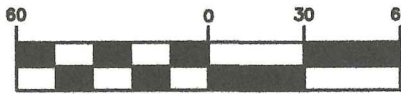
UNO Unless Noted Otherwise

NDR No Discovered Record

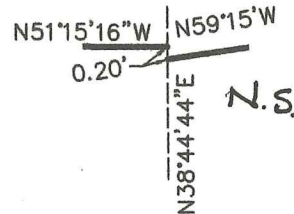
( )1 2005 MAPS 71

N.S. Not Searched

**GRAPHIC SCALE**



( IN FEET )



**DETAIL "A"**

NOT TO SCALE

**NOTE: See 2005 M 071  
For Additional Evidence  
Discovered In 2005.**



10-3-18

Lawrence A. Stevens, PLS 6649

Copyright © Lawrence A. Stevens 2018

**Corner Record  
Lands of Belman**

(Lot 6, 14 RM 48 & a portion of Lot 4, 14 RM 16)

San Rafael Marin County California  
Scale: 1" = 60' October, 2018

**L.A. Stevens & Associates, Inc.**

Professional Land Surveyors \* (415) 382-7713  
7 Commercial Blvd., Suite 1 \* Novato, CA 94949

Job # 181905