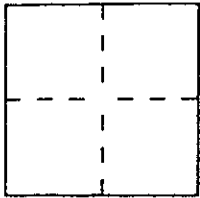


CORNER RECORD

Document Number A.P. # 178-221-60&61

City of SAN RAFAEL County of MARIN, California

Brief Legal Description AP # 178-221-60 & 61 ; Lot 6 & 7 of 14-RM-48



CORNER TYPE

Government Corner Control
 Meander Property
 Rancho Other
 Date of Survey 7.16.1993

COORDINATES (Optional)

N. _____
 E. _____
 Zone _____ Datum _____
 Elev. _____

Corner — Left as found Found and tagged Established Reestablished Rebuilt

Identification and type of corner found: Evidence used to identify or procedure used to establish or reestablish the corner:

1. FOUND 2 (Two) STANDARD CITY MONUMENTS

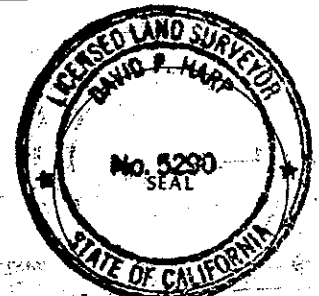
A description of the physical condition of the monument as found and as set or reset:

1. O SET REBAR & CUP L.S. 5290
2. O SET BRASS TAG L.S. 5290
3. O SET HUB & BRASS TAG L.S. 5290

SURVEYOR'S STATEMENT

This Corner Record was prepared by me or under my direction in conformance with the Land Surveyors' Act on 9/30 1993.

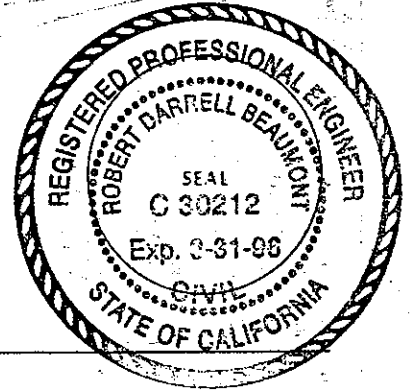
Signed David Hays L.S. or R.C.E. Number LS 5290



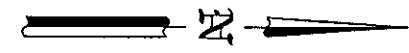
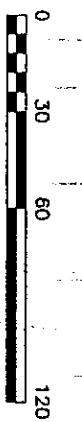
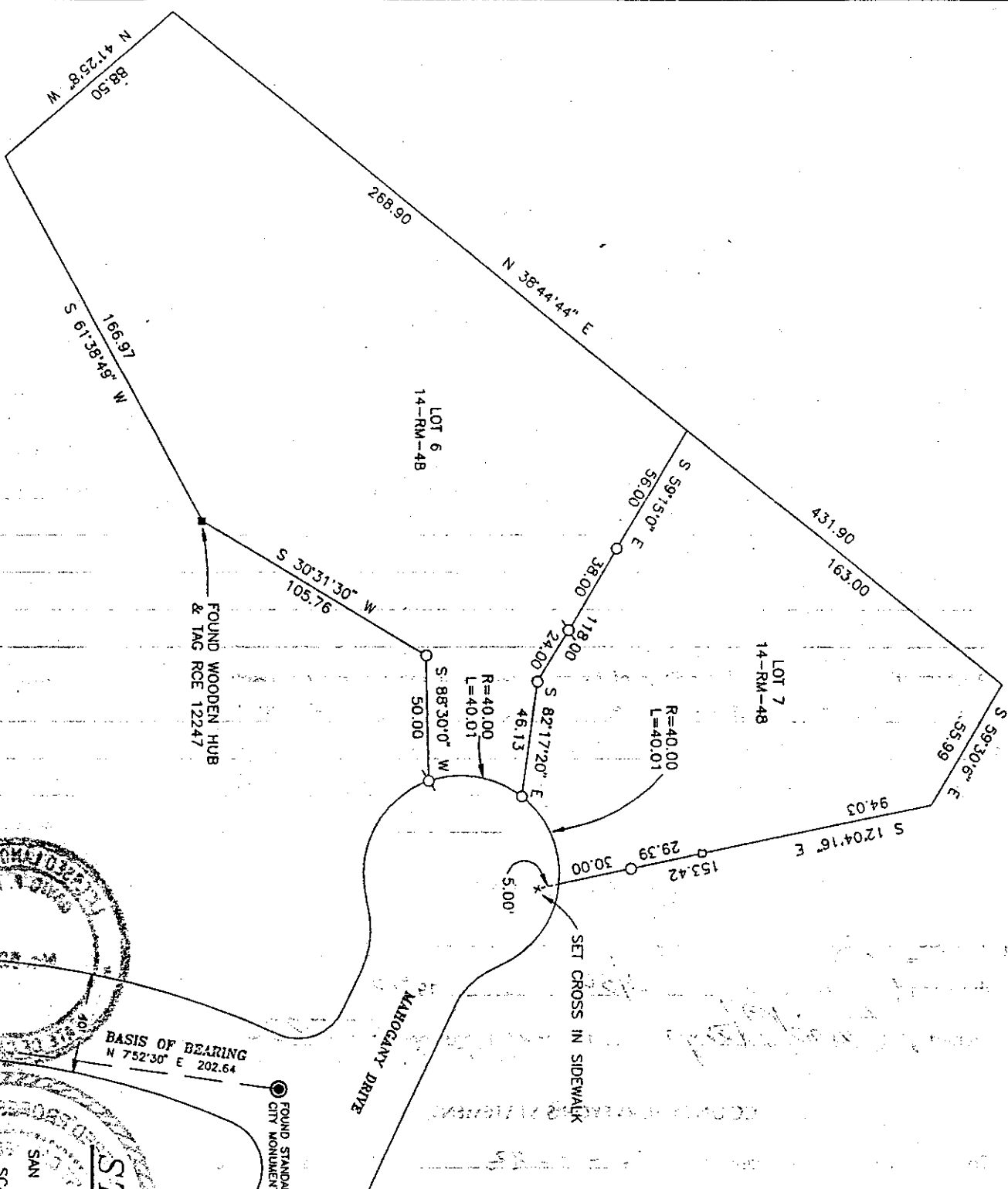
COUNTY SURVEYOR'S STATEMENT

This Corner Record was received 10-4-93 19___ and examined and filed 10-4-93 19___.

Signed [Signature] Title DCR



County Surveyor's Comment _____



LEGEND:

- SET REBAR & CUP L.S. 5290
- SET BRASS TAG L.S. 5290
- SET HUB & TAG L.S. 5290

STAKING DIAGRAM

DAVID HARP • LAND SURVEYOR
 275 MACNOLA AVE., LARKSPUR, CALIFORNIA, 94939.
 (415) 924-7760

37 & 43 MAHOGANY DRIVE
 AP# 178-221-60 & 61
 SAN RAFAEL MARIN COUNTY CALIFORNIA

SCALE 1"=60'
 SURVEY H-977
 JULY 1993

FOUND WOODEN HUB & TAG RCE 12247

FOUND STANDARD CITY MONUMENT

FOUND STANDARD CITY MONUMENT

BASIS OF BEARING
 N 75°2'30" E 202.64

MAHOGANY DRIVE