

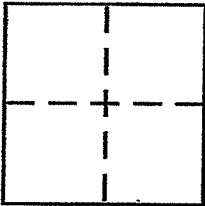
**CORNER RECORD**

Document Number 178-083-02

City of SAN RAFAEL

County of MARIN, California

Brief Legal Description LOT 2, MAP OF TERRA LINDA, UNIT 23, 13 RM 24



**CORNER TYPE**

Government Corner  Control   
Meander  Property   
Rancho  Other   
Date of Survey NOV. 7, 2011

**COORDINATES (Optional)**

N. \_\_\_\_\_  
E. \_\_\_\_\_  
Zone \_\_\_\_\_ NAD27  NAD83   
NAD83 Epoch \_\_\_\_\_  
Elev. \_\_\_\_\_  
Vert. Datum: NGVD29  NAVD88   
Meas. Units: Metric  Imperial

Corner - Left as found  Found and tagged  Established  Reestablished  Rebuilt

Identification and type of corner found: Evidence used to identify or procedure used to establish or reestablish the corner:

REESTABLISH THE EASTERLY & WESTERLY LINES OF LOT 2  
MAP OF TERRA LINDA ESTATES, UNIT 23, 13 RM 24 FROM  
STANDARD STREET MONUMENTS OF SAID RECORD MAP ON  
SANDALWOOD COURT. SEE SKETCH ON REVERSE SIDE FOR  
DETAILS OF POINTS EITHER FOUND OR POINTS SET

A description of the physical condition of the monument as found and as set or reset: SET EITHER A  
1/2" REBAR WITH YELLOW PLASTIC CAP ATTACHED TO THE  
TOP STAMPED "PLS 5379, SCRANTON" WITH TOP DRIVEN  
FLUSH TO SURROUNDING GRADE OR SET BRASS NAIL WITH BRASS  
DISK STAMPED "LS 5379" IN CONCRETE. SEE SKETCH FOR LOCATIONS.

**SURVEYOR'S STATEMENT**

This Corner Record was prepared by me or under my direction in conformance with

the Land Surveyor's Act on NOVEMBER 10<sup>th</sup> 2011

Signed Douglas J. Scranton LS or R.C.E. No. PLS 5379

**COUNTY SURVEYOR'S STATEMENT**

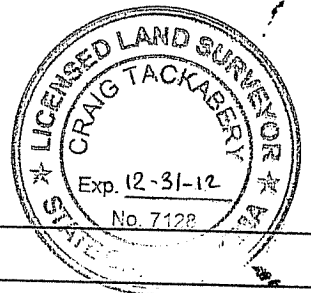
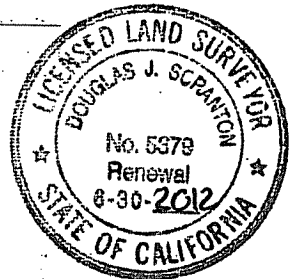
This Corner Record was received NOVEMBER 16, 2011

and examined and filed DECEMBER 22, 2011

Signed \_\_\_\_\_ P.L.S or R.C.E. No. 7128

Title COUNTY SURVEYOR

County Surveyor's Comment \_\_\_\_\_



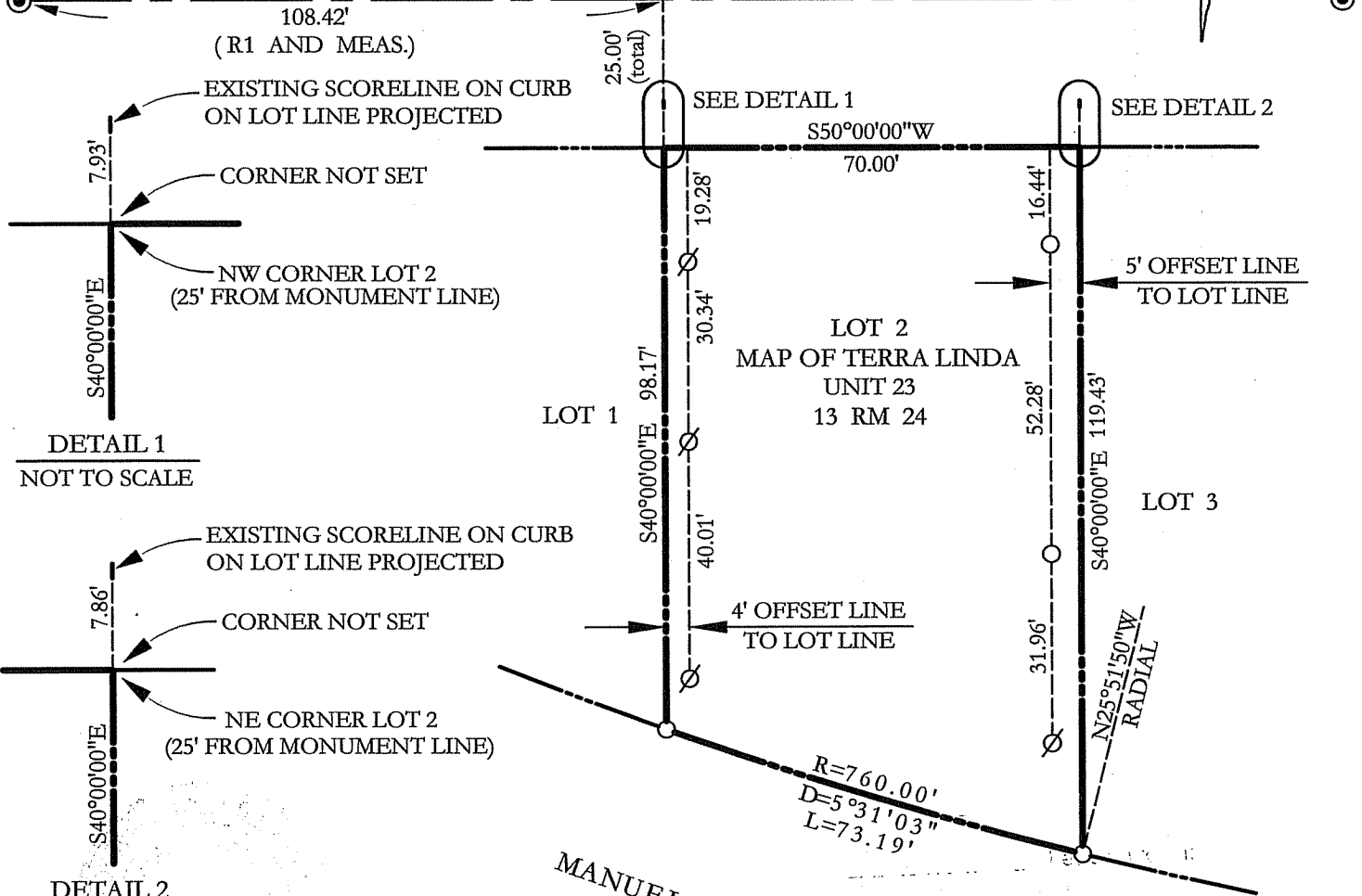
PREPARED BY  
DJ SCRANTON SURVEYING PETALUMA, CA



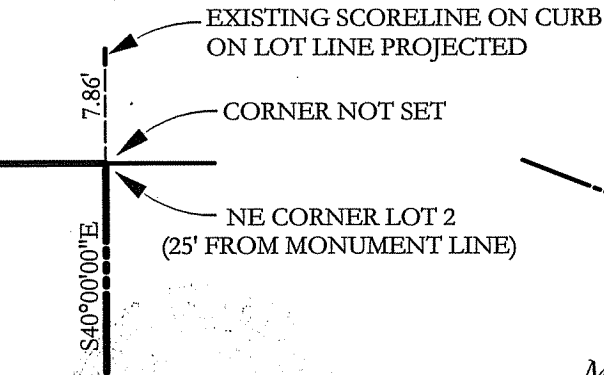
SANDALWOOD COURT (50')

BASIS OF BEARINGS

N50°00'00"E 617.89' (R1) 617.84' MEAS.



DETAIL 1  
NOT TO SCALE



DETAIL 2  
NOT TO SCALE

NOTE:  
DISTANCE SHOWN FROM LOT CORNER TO SCORE LINE WAS TAKEN AT THE SCORELINE MIDPOINT

BASIS OF BEARINGS

TAKEN AS NORTH 50°00'00" EAST BETWEEN FOUND MONUMENTS AS SHOWN HEREON AND AS SAID MONUMENTS ARE DEPICTED UPON R1

ALL DIMENSIONS GIVEN IN FEET AND DECIMALS THEREOF

NO EASEMENTS ARE SHOWN

LEGEND

- ⊙ STANDARD STREET MONUMENT
- SET 1/2" REBAR/PLS CAP 5379
- ∅ SET BRASS NAIL WITH TAG LS 5379
- R1 13 RM 24