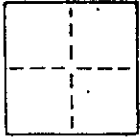


**CORNER RECORD**

COUNTY OF MARIN T. \_\_\_\_\_ R. \_\_\_\_\_ MERIDIAN \_\_\_\_\_ CALIFORNIA  
 CORNER TYPE GOV'T. CORNER  MEANDER  RANCHO  CONTROL  OTHER   
 CORNER IDENTIFICATION — DATE OF VISIT \_\_\_\_\_ 19\_\_\_\_



N/A

1 of 3

CORNER — LEFT AS FOUND  FOUND AND TAGGED  REESTABLISHED OBLITERATED CORNER  REBUILT

PHYSICAL DESCRIPTION OF CORNER FOUND; EVIDENCE AND METHOD USED TO IDENTIFY OR REESTABLISH

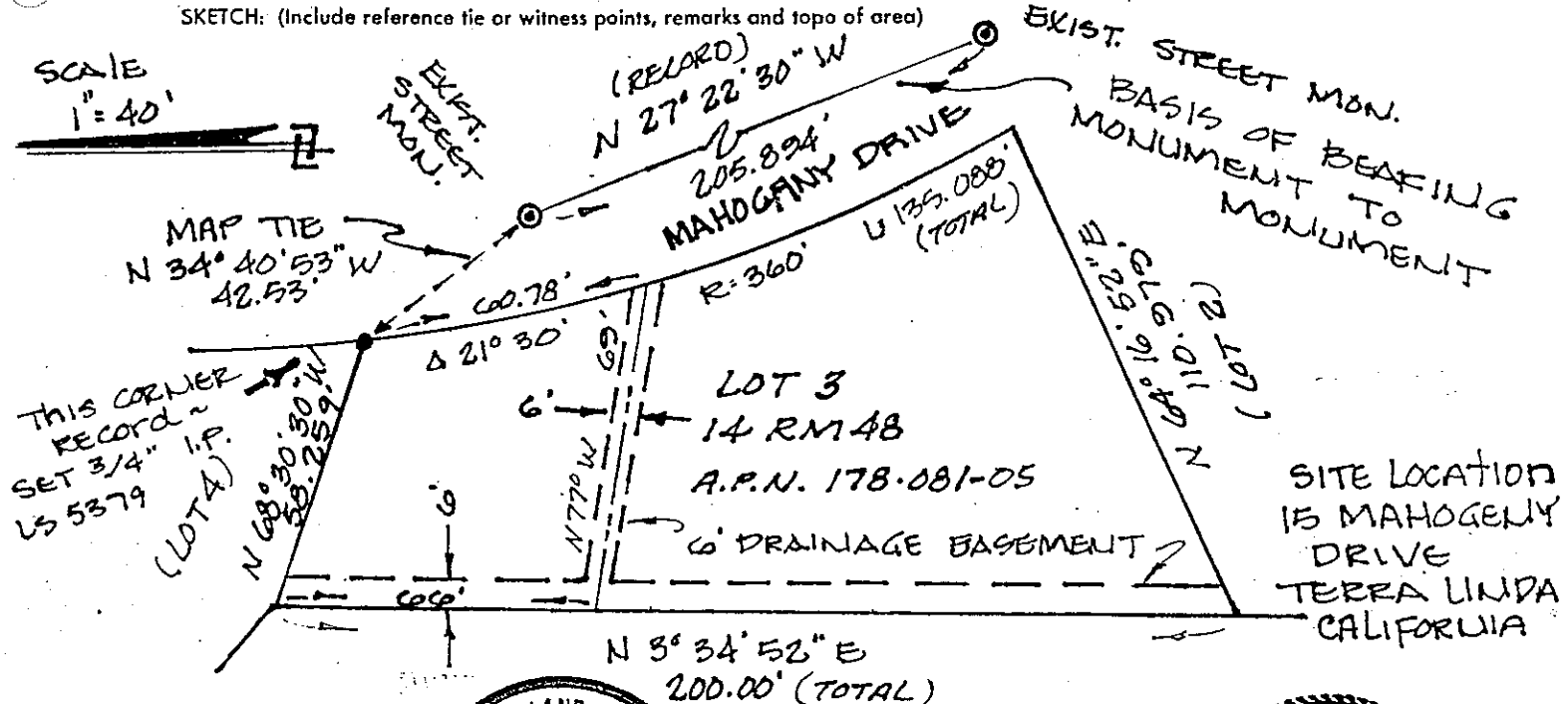
N/A

PHYSICAL DESCRIPTION OF MONUMENTS REBUILT OR PERPETUATED

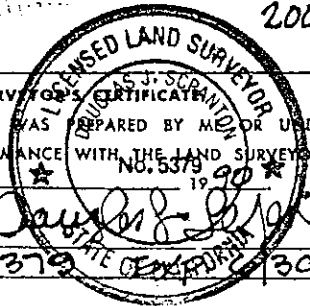
SET 3/4" IRON PIPE WITH LS TAG 5379 AT THE NORTHEASTERLY CORNER OF LOT 3 OF THE MAP OF TERRA LINDA TERRACE, 14 RM 48, BEING A.P.N. 178-081-05

CALIFORNIA COORDINATE SYSTEM ORDER: FIRST  SECOND  THIRD  N/A  
 STATIONS USED: NGS (USC & GS)  STATE  COUNTY  OTHER  STATION \_\_\_\_\_ STATION \_\_\_\_\_  
 ZONE \_\_\_\_\_ ELEVATION \_\_\_\_\_ NORTHINGS (Y) \_\_\_\_\_ EASTINGS (X) \_\_\_\_\_

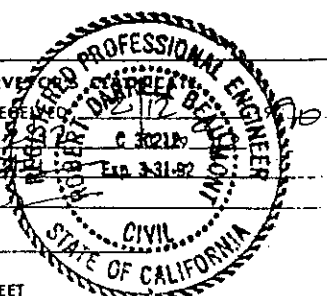
SKETCH: (Include reference tie or witness points, remarks and topo of area)



THIS CORNER RECORD WAS PREPARED BY ME OR UNDER MY DIRECTION IN CONFORMANCE WITH THE LAND SURVEYORS ACT ON FEB. 9 1990  
 SIGNED: [Signature]  
 L.S. or R.C.E. No.: 5379 FILE NO. 30/92

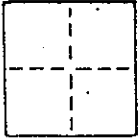


COUNTY SURVEYOR \_\_\_\_\_ THE CORNER RECORD WAS RECEIVED AND EXAMINED AND FILED BY: [Signature] TITLE: DC  
 DOCUMENT No. \_\_\_\_\_ STATEMENT ON BACK OF SHEET YES  NO



# CORNER RECORD

COUNTY OF MARIN T. \_\_\_\_\_ R. \_\_\_\_\_ MERIDIAN \_\_\_\_\_ CALIFORNIA  
 CORNER TYPE: GOVT. CORNER  MEANDER  RANCHO  CONTROL  OTHER   
 CORNER IDENTIFICATION — DATE OF VISIT \_\_\_\_\_ 19\_\_



N/A

2 of 3

CORNER — LEFT AS FOUND  FOUND AND TAGGED  REESTABLISHED OBLITERATED CORNER  REBUILT

PHYSICAL DESCRIPTION OF CORNER FOUND; EVIDENCE AND METHOD USED TO IDENTIFY OR REESTABLISH

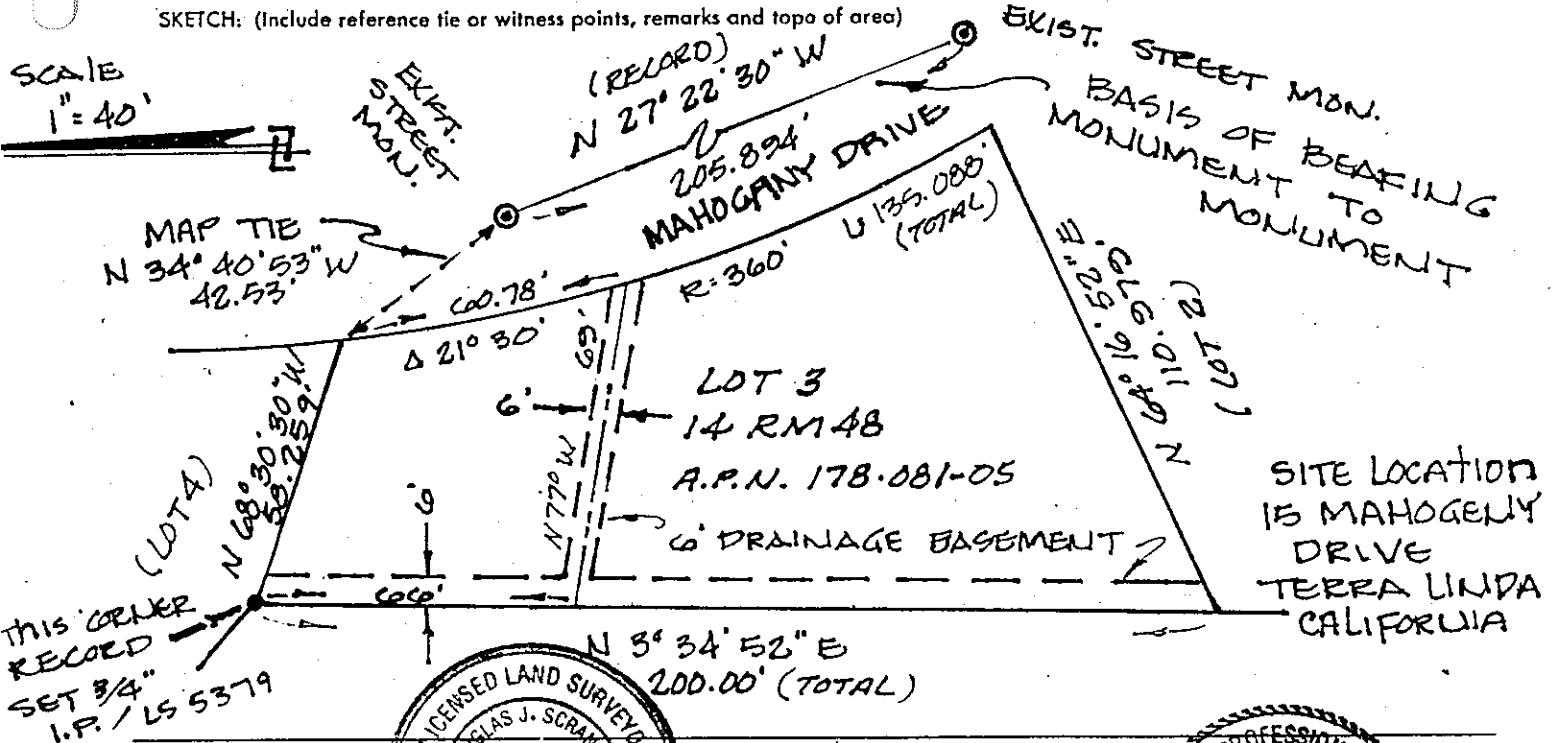
N/A

PHYSICAL DESCRIPTION OF MONUMENTS REBUILT OR PERPETUATED

SET 3/4" IRON PIPE WITH LS TAG 5379 AT THE NORTH WESTERLY CORNER OF LOT 3 OF THE MAP OF TERRA LINDA TERRACE, 14 RM 48; BEING A.P.N. 178-081-05

CALIFORNIA COORDINATE SYSTEM ORDER: FIRST  SECOND  THIRD  N/A  
 STATIONS USED: NGS (USC & GS)  STATE  COUNTY  OTHER  STATION \_\_\_\_\_ STATION \_\_\_\_\_  
 ZONE \_\_\_\_\_ ELEVATION \_\_\_\_\_ NORTHINGS (Y) \_\_\_\_\_ EASTINGS (X) \_\_\_\_\_

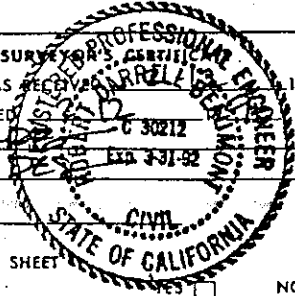
SKETCH: (Include reference tie or witness points, remarks and topo of area)



SURVEYOR'S CERTIFICATE  
 THIS CORNER RECORD WAS PREPARED BY ME OR UNDER MY DIRECTION IN CONFORMANCE WITH THE LAND SURVEYORS ACT ON FEB. 9 1990

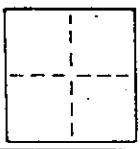
SIGNED: \_\_\_\_\_  
 L.S. or R.C.E. No. 5379 Exp. 6/30/92

COUNTY SURVEYOR'S CERTIFICATE  
 THE CORNER RECORD WAS RECEIVED, EXAMINED AND FILED BY: \_\_\_\_\_  
 TITLE: \_\_\_\_\_  
 DOCUMENT No. \_\_\_\_\_  
 STATEMENT ON BACK OF SHEET \_\_\_\_\_



# CORNER RECORD

COUNTY OF MARIN T. \_\_\_\_\_ R. \_\_\_\_\_ MERIDIAN \_\_\_\_\_ CALIFORNIA  
 CORNER TYPE: GOVT. CORNER  MEANDER  RANCHO  CONTROL  OTHER   
 CORNER IDENTIFICATION — DATE OF VISIT \_\_\_\_\_ 19\_\_\_\_



N/A

3 of 3

CORNER — LEFT AS FOUND  FOUND AND TAGGED  REESTABLISHED OBLITERATED CORNER  REBUILT

PHYSICAL DESCRIPTION OF CORNER FOUND; EVIDENCE AND METHOD USED TO IDENTIFY OR REESTABLISH

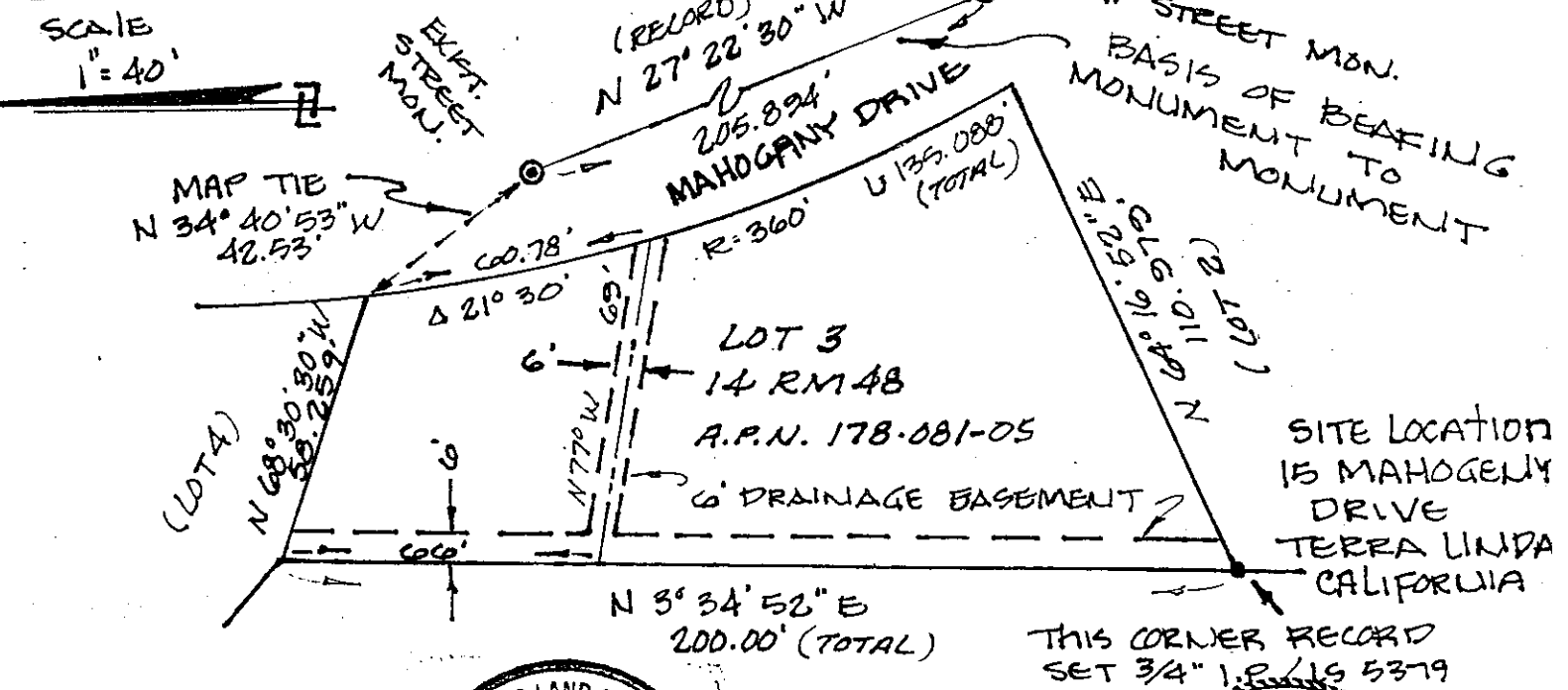
N/A

PHYSICAL DESCRIPTION OF MONUMENTS REBUILT OR PERPETUATED

SET 3/4" IRON PIPE WITH LS TAG 5379 AT THE SOUTHWESTERLY CORNER OF LOT 3 OF THE MAP OF TERRA LINDA TERRACE, 14 RM 48, BEING A.P.N. 178-081-05

CALIFORNIA COORDINATE SYSTEM ORDER: FIRST  SECOND  THIRD  N/A  
 STATIONS USED: NGS (USC & GS)  STATE  COUNTY  OTHER  STATION \_\_\_\_\_ STATION \_\_\_\_\_  
 ZONE \_\_\_\_\_ ELEVATION \_\_\_\_\_ NORTHINGS (Y) \_\_\_\_\_ EASTINGS (X) \_\_\_\_\_

SKETCH: (Include reference tie or witness points, remarks and topo of area)



SURVEYOR'S CERTIFICATE  
 THIS CORNER RECORD WAS PREPARED BY \_\_\_\_\_ UNDER MY DIRECTION IN CONFORMANCE WITH THE LAND SURVEYORS ACT ON FEB. 9 No. 5379  
 SIGNED: [Signature]  
 L.S. or R.C.E. No.: 5379 DATE OF CALIFORNIA: 6/30/92

COUNTY SURVEYOR'S CERTIFICATE  
 THE CORNER RECORD WAS RECEIVED BY \_\_\_\_\_ AND EXAMINED AND FILED \_\_\_\_\_ 1992  
 BY: [Signature] C 30212  
 TITLE: Exp. 3-31-92  
 DOCUMENT No. \_\_\_\_\_  
 STATEMENT ON BACK OF SHEET \_\_\_\_\_  
 NO X