

A.P. #178-072-08409

### CORNER RECORD

COUNTY OF MARIN T. \_\_\_\_\_ R. \_\_\_\_\_ MERIDIAN CALIFORNIA  
 CORNER TYPE: GOVT. CORNER  MEANDER  RANCHO  CONTROL  OTHER   
 CORNER IDENTIFICATION - DATE OF VISIT \_\_\_\_\_ 19\_\_\_\_



NOT APPLICABLE

CORNER - LEFT AS FOUND  FOUND AND TAGGED  REESTABLISHED OBLITERATED CORNER  REBUILT

PHYSICAL DESCRIPTION OF CORNER FOUND; EVIDENCE AND METHOD USED TO IDENTIFY OR REESTABLISH

NOT APPLICABLE

PHYSICAL DESCRIPTION OF MONUMENTS, REBUILT OR PERPETUATED

LAS COLINDAS - UNIT 7 10 RM 91  
SET THE CORNERS COMMON TO LOT 193/194 AS PER  
RECORD MAP AS SHOWN BELOW

AP# 178-072-08409

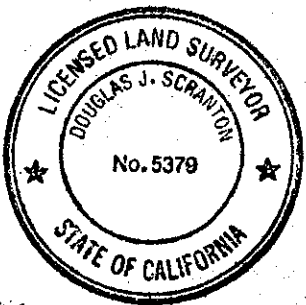
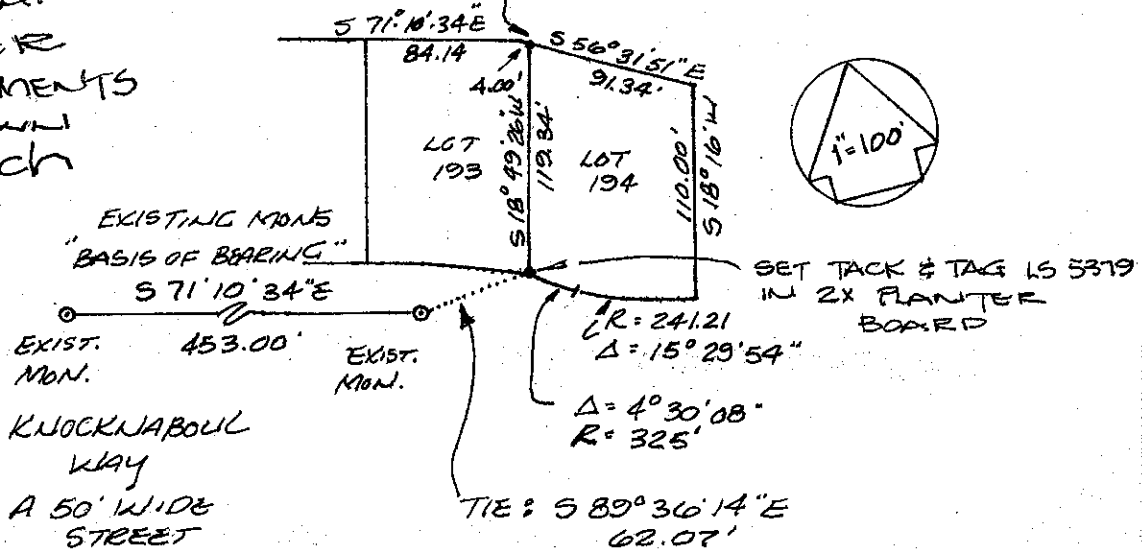
CALIFORNIA COORDINATE SYSTEM ORDER: FIRST  SECOND  THIRD  NOT APPLICABLE  
 STATIONS USED: NGS (USC & GS)  STATE  COUNTY  OTHER  STATION \_\_\_\_\_ STATION \_\_\_\_\_  
 ZONE \_\_\_\_\_ ELEVATION \_\_\_\_\_ NORTHINGS (Y) \_\_\_\_\_ EASTINGS (X) \_\_\_\_\_

SKETCH: (Include reference tie or witness points, remarks and topo of area)

REFER TO  
 RECORD MAP  
 FOR FURTHER  
 DETAIL/EASEMENTS  
 ARE NOT SHOWN  
 ON THIS SKETCH

SET 3/4" IRON  
 PIPE/LS 5379  
 AT COMMON CORNER

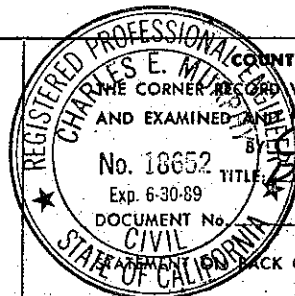
LAS COLINDAS, UNIT 7  
 10 RM 91



#### SURVEYOR'S CERTIFICATE

THIS CORNER RECORD WAS PREPARED BY ME OR UNDER MY DIRECTION IN CONFORMANCE WITH THE LAND SURVEYORS ACT ON FEBRUARY 18 1987.

SIGNED: Douglas J. Scranton  
 L.S. or R.C.E. No.: LS 5379  
Exp. 6/30/88



#### COUNTY SURVEYOR'S CERTIFICATE

THIS CORNER RECORD WAS RECEIVED FEB 20 1987  
 AND EXAMINED AND FILED MARCH 4 1987  
 BY Charles E. Milroy  
 TITLE: Deputy County Surveyor

No. 18652  
 Exp. 6-30-89  
 DOCUMENT No. \_\_\_\_\_  
 CIVIL

SEAL

BACK OF SHEET

YES  NO