

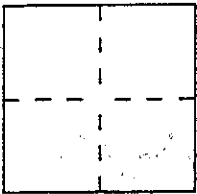
CORNER RECORD

Document Number A.P. #178-041-23

City of SAN RAFAEL

County of MARIN, California

Brief Legal Description LOT 152 LAS COLINDAS, UNIT 5, 8 RM 90, M.C.R., APN 178-041-23



CORNER TYPE

COORDINATES (Optional)

Government Corner Control
Meander Property
Rancho Other
Date of Survey July 27, 1994

N. _____
E. _____
Zone _____ Datum _____
Elev. _____

Corner ← Left as found Found and tagged Established Reestablished Rebuilt

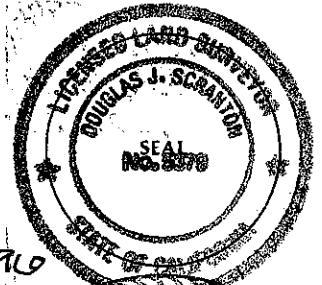
Identification and type of corner found: Evidence used to identify or procedure used to establish or reestablish the corner:
Reestablish the SOUTHWESTERLY, SOUTHEASTERLY & NORTHEASTERLY CORNER OF LOT 152 OF THE MAP OF LAS COLINDAS, UNIT 5, 8 RM 90, FROM EXISTING STREET MONUMENTS OF RECORD ON HEATHER WAY.

A description of the physical condition of the monument as found and as set or reset:
set 1/2 rebar with PLS 5379 CAP AFFIXED TO TOP

SURVEYOR'S STATEMENT

This Corner Record was prepared by me or under my direction in conformance with the Land Surveyors' Act on AUGUST 15th 1994.

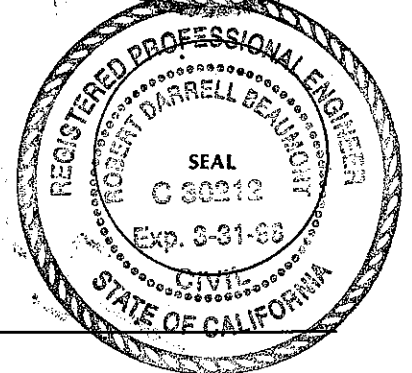
Signed Douglas J. Scranton L.S. or R.C.E. Number PLS 5379
renewal 6-30-96



COUNTY SURVEYOR'S STATEMENT

This Corner Record was received AUGUST 16 1994 and examined and filed 8-17 1994.

Signed R. D. P. [Signature] Title Des



County Surveyor's Comment _____

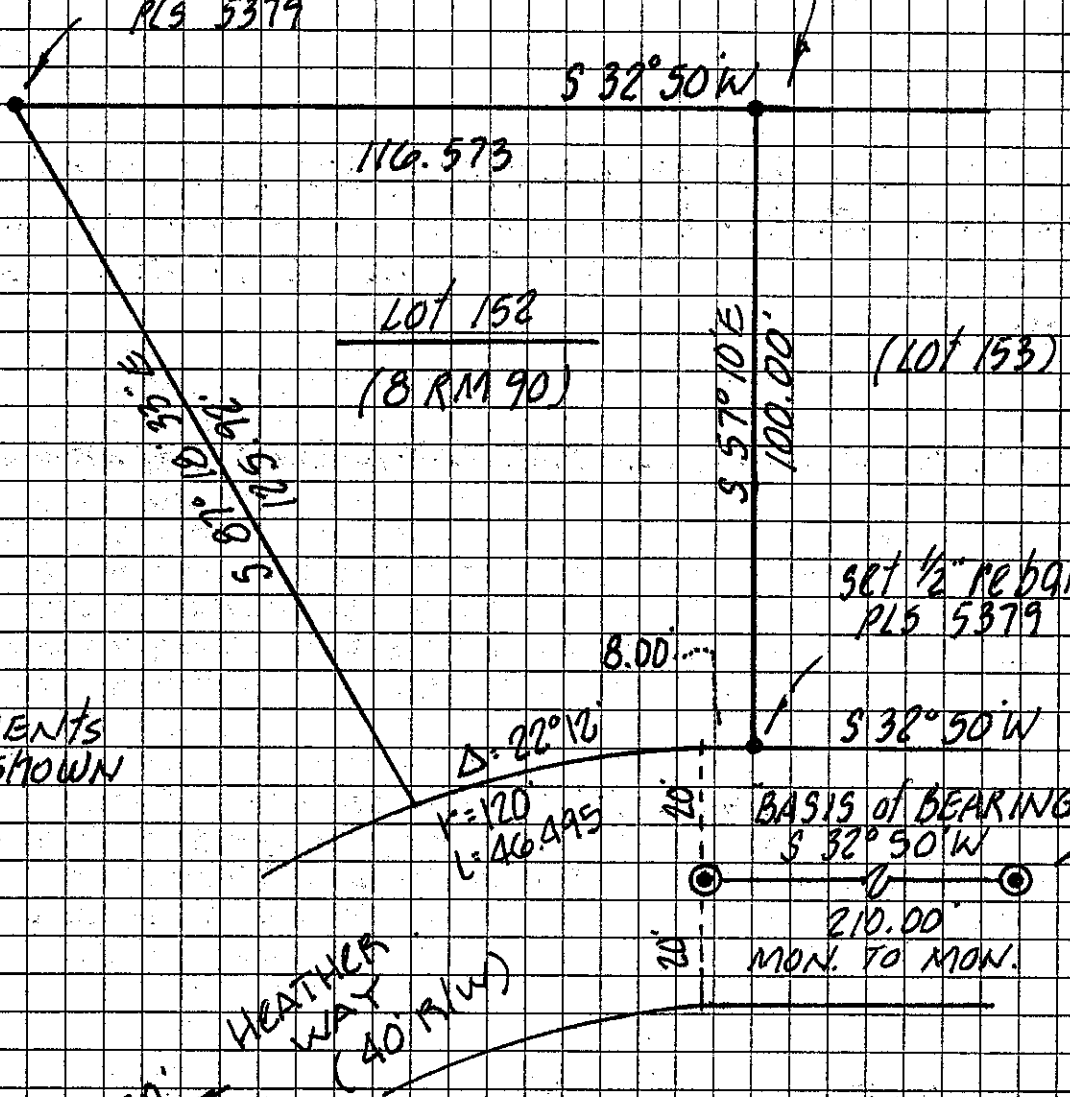
SITUS: 532 HEATHER WAY
SAN RAFAEL

APN: 178-041-23

MAP OF LAS COLINDAS (8 RM 90)

set 1/2" rebar
PLS 5379

set 1/2" rebar
PLS 5379



NOTE:
EASEMENTS
NOT SHOWN

$\Delta = 22^\circ 16'$
 $R = 120'$
 $L = 146.495'$

BASIS OF BEARING
S 32° 50' W
210.00'
MON. TO MON.

HEATHER
WAY
(40' R/W)

1"=30'