

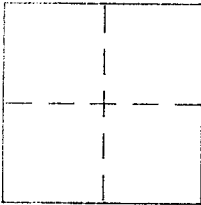
CORNER RECORD

Document Number 178-041-21

City of SAN RAFAEL

County of MARIN, California

Brief Legal Description LOT 151 MAP OF LAS COLINDAS Unit 5 8 RM 90



CORNER TYPE

Government Corner [ ] Control [ ]
Meander [ ] Property [x]
Rancho [ ] Other [ ]
Date of Survey 3/1/2005

COORDINATES (Optional)

N.
E.
Zone NAD27 [ ] NAD83 [ ]
NAD83 Epoch
Elev.
Vert. Datum: NGVD29 [ ] NAVD88 [ ]
Meas. Units: Metric [ ] Imperial [ ]

Corner - Left as found [ ] Found and tagged [ ] Established [ ] Reestablished [x] Rebuilt [ ]

Identification and type of corner found: Evidence used to identify or procedure used to establish or reestablish the corner:

re-establish a portion of the southerly line of LOT 151, MAP OF LAS COLINDAS Unit 5, 8 RM 90 from existing standard street monuments per SAID MAP ON VIA HORQUETA. Refer to sketch on reverse side for specific details.

A description of the physical condition of the monument as found and as set or reset:

Refer to sketch for individual points set. ON LOT LINE PROJECTED set BRASS NAIL WITH LS TAG 5379 IN CURB. ON SOUTHERLY LINE set 1/2" rebar with PLS CAP 5379 @ random interval. ON CURVE PORTION set @ random intervals either 60# NAIL OR 2x2 HUB WITH CUP TACK.

SURVEYOR'S STATEMENT

This Corner Record was prepared by me or under my direction in conformance with

the Land Surveyor's Act on MARCH 23 2005

Signed Douglas J. Scranton P.L.S. or R.C.E. No. PLS 5379



COUNTY SURVEYOR'S STATEMENT

This Corner Record was received MARCH 31, 2005

and examined and filed MAY 3, 2005

Signed [Signature] P.L.S. or R.C.E. No. 7128

Title COUNTY SURVEYOR

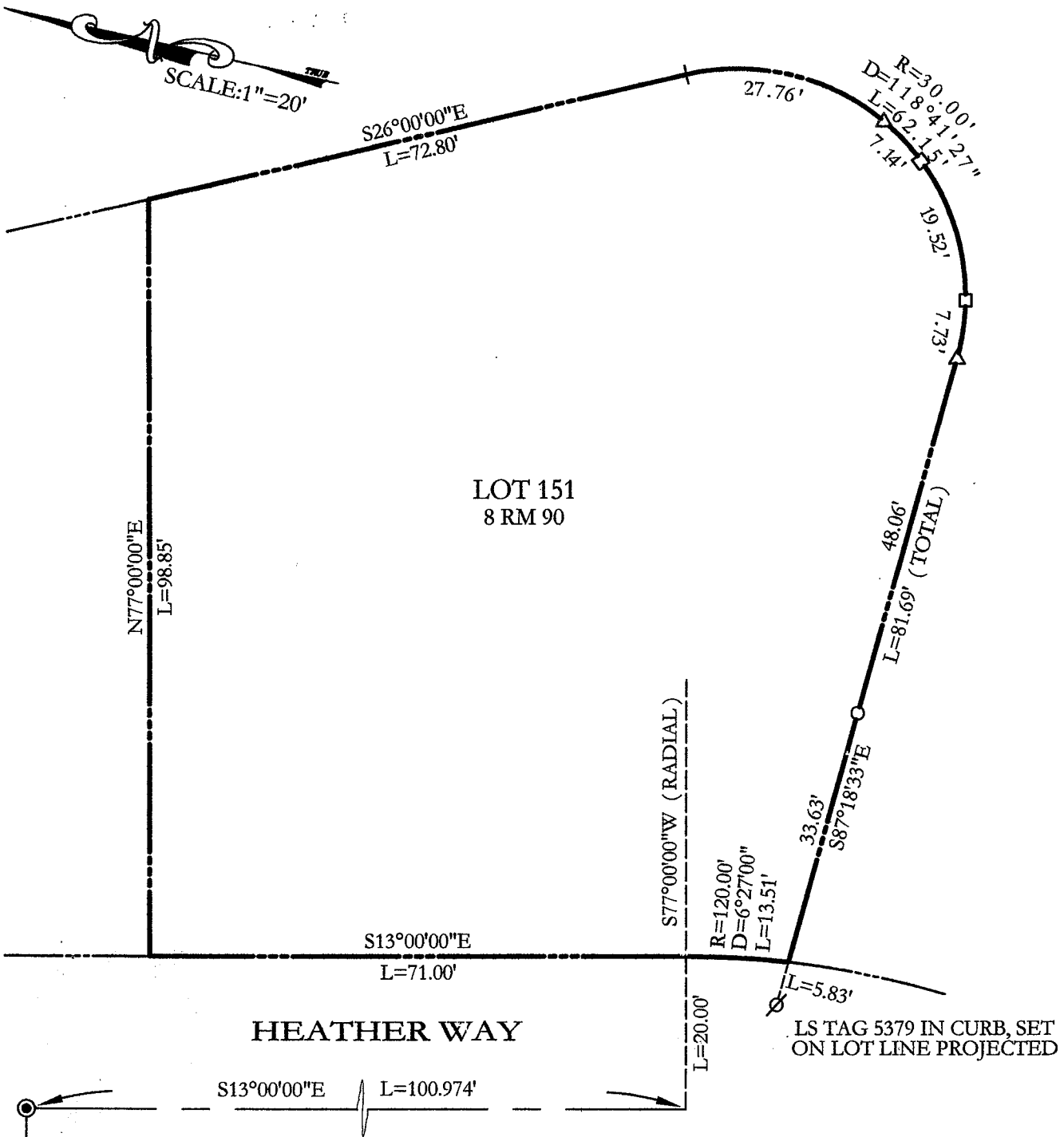
County Surveyor's Comment



Prepared by DJ SCRANTON SURVEYING NOVATO, CA

JN 10468

SCALE: 1"=20'



LEGEND

- STREET MONUMENT
- SET 1/2" REBAR/PLS 5379
- ∅ SET BRASS TAG LS 5379 IN CURB
- SET HUB AND TACK
- △ SET NAIL

ALL DISTANCES GIVEN IN FEET AND DECIMALS THEREOF  
NO EASEMENTS ARE DEPICTED

BASIS OF BEARINGS  
TAKEN AS S77°00'00"W BETWEEN MONUMENTS AS SHOWN

S77°00'00"W (L=312.05')  
BASIS OF BEARINGS