

CORNER RECORD

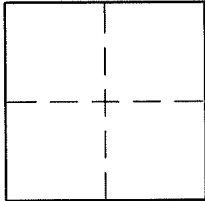
Agency Index DPW 21-097

Document Number 178-041-10

City of SAN RAFAEL

County of MARIN, California

Brief Legal Description LOT 140, MAP OF LAS COLINDAS UNIT FIVE, 8 MAPS 90



CORNER TYPE

Government Corner Control
Meander Property
Rancho Other

Date of Survey 9/23/2021

COORDINATES (Optional)

N. _____ E. _____

Elevation _____

Units Metric U.S. Survey Foot

Horizontal Datum _____

Zone _____ Epoch Date _____

Vertical Datum _____

Complies with Public Resources Code §§8801-8819

Complies with Public Resources Code §§8890-8902

PLS Act Ref: 8765(d) 8771 8773 Other:

Corner / Monument: Left as found Established Rebuilt Pre-Construction
 Found and tagged Reestablished Referenced Post-Construction

Narrative of corner identified and monument as found, set, reset, replaced, or removed:

See sheet #2 for description (s):

SURVEYOR'S STATEMENT

This Corner Record was prepared by me or under my direction in conformance with the Professional Land Surveyors' Act on 10/8/21

Signed [Signature] P.L.S. or R.C.E. No. 8475



COUNTY SURVEYOR'S STATEMENT

This Corner Record was received 7-31-21

and examined and filed 1-31-22

Signed [Signature] P.L.S. or R.C.E. No. 9292

Title DEPUTY

County Surveyor's Comment _____

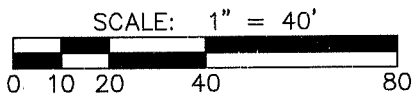
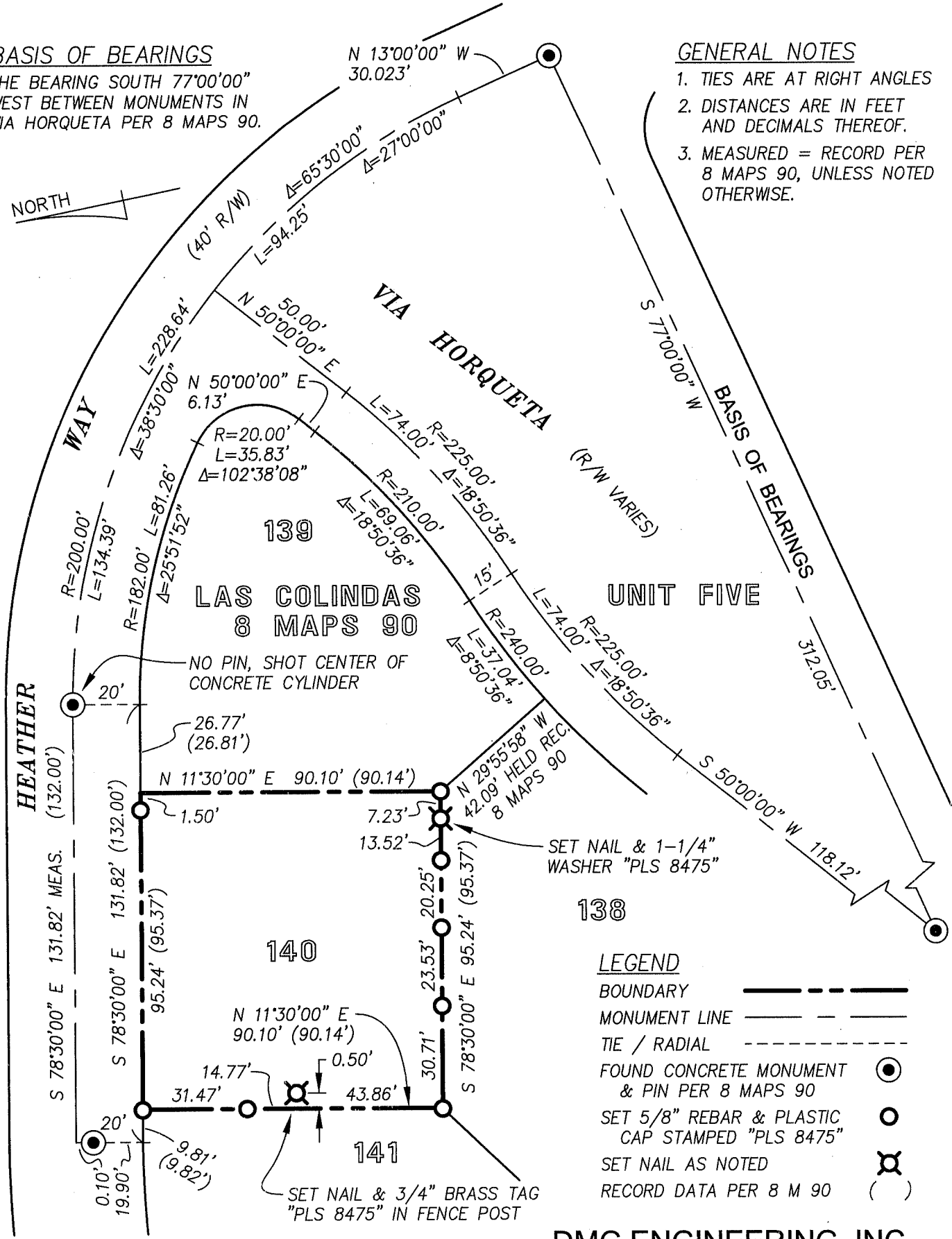


BASIS OF BEARINGS

THE BEARING SOUTH 77°00'00" WEST BETWEEN MONUMENTS IN VIA HORQUETA PER 8 MAPS 90.

GENERAL NOTES

1. TIES ARE AT RIGHT ANGLES
2. DISTANCES ARE IN FEET AND DECIMALS THEREOF.
3. MEASURED = RECORD PER 8 MAPS 90, UNLESS NOTED OTHERWISE.



DMG ENGINEERING, INC.

30 OAKVUE COURT, PLEASANT HILL, CALIF. 94523
 PHONE (925) 787-0463 • FAX (925) 287-8503
 JOB: 21-90 DATE: 10/8/2021