

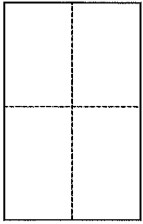
CORNER RECORD

Document Number 178-011-04

City of San Rafael

County of Marin, California

Brief Legal Description Lot 577, shown on Map of "Terra Linda No.7", in Book 8 of Maps, page 83-2.



CORNER TYPE

Government Corner Control
Meaneder Property
Rancho Other
Date of Survey 04/15/2014

COORDINATES (Optional)

N. _____
E. _____
Zone _____ NAD27 NAD83
NAD83 Epoch _____
Elev. _____
Vert. Datum: NGVD29 NAVD88
Meas. Units: Metric Imperial

Corner - Left as found Found and tagged Established Reestablished Rebuilt

Identification and type of corner found: Evidence used to identify or procedure used to establish or reestablish the corner:
Original Centerline Monuments per Map of "Terra Linda No.7" were found in record position and used to reestablish the NE line of Lot 577.

A description of the physical condition of the monument as found and as set or reset:
Set (1) 1/2" iron pipe at North property corner.
Set (1) 1/2" iron pipe LS7237, on said line, as a 2 ft witness corner to the East property corner.

SURVEYOR'S STATEMENT

This Corner Record was prepared by me or under my direction in conformance with the Land Surveyor's Act on April 18, 2014
Signed Michael E. Ford P.L.S. or R.C.E. No. 7237

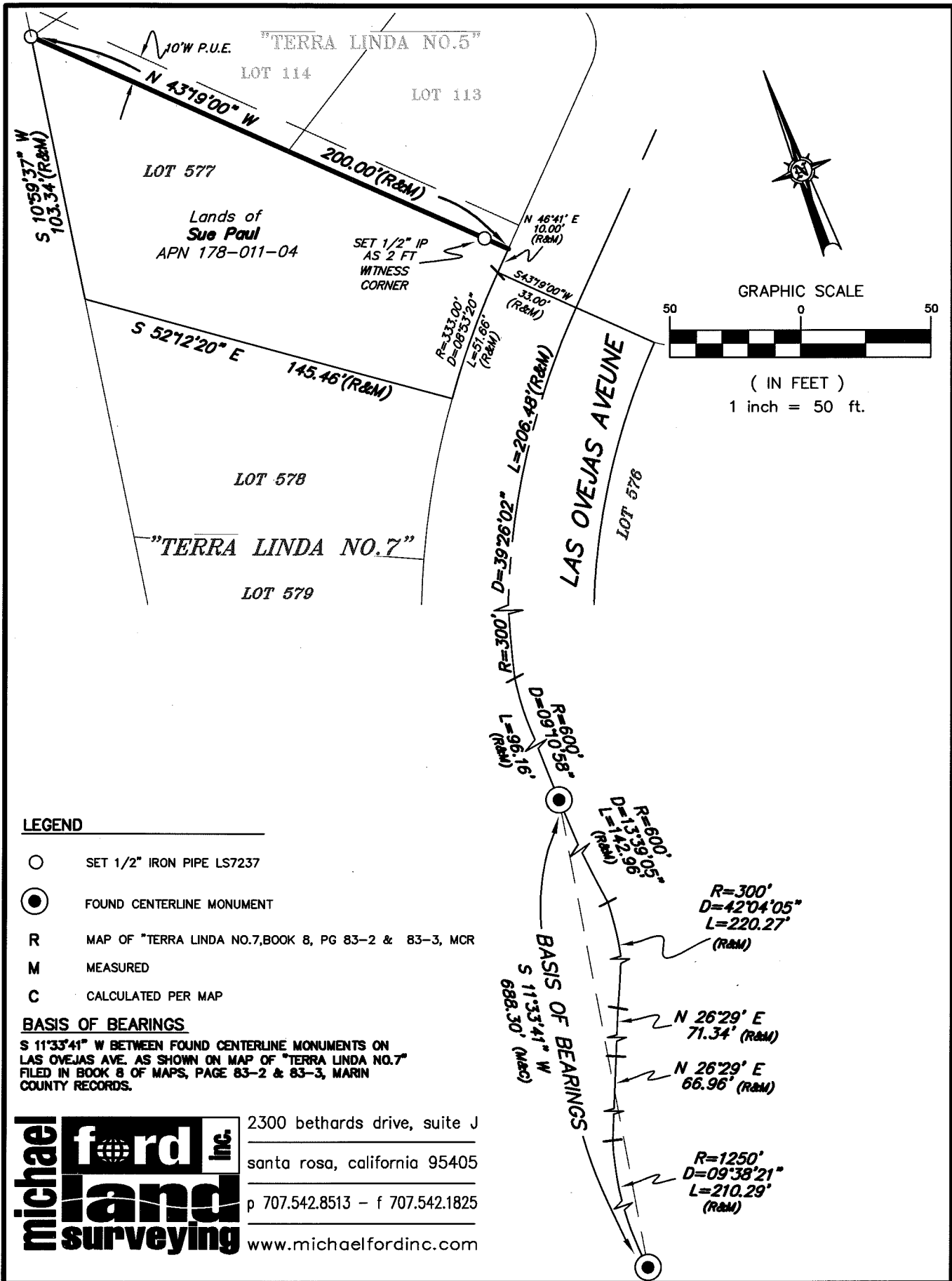


COUNTY SURVEYOR'S STATEMENT

This Corner Record was received 6-19-14
and examined and filed July 22, 2014
Signed Richard G. Simonitch P.L.S. or R.C.E. No. 7821
Title DEPUTY



County Surveyor's Comment



LEGEND

- SET 1/2" IRON PIPE LS7237
- FOUND CENTERLINE MONUMENT
- R MAP OF "TERRA LINDA NO.7, BOOK 8, PG 83-2 & 83-3, MCR
- M MEASURED
- C CALCULATED PER MAP

BASIS OF BEARINGS

S 11°33'41" W BETWEEN FOUND CENTERLINE MONUMENTS ON LAS OVEJAS AVE. AS SHOWN ON MAP OF "TERRA LINDA NO.7" FILED IN BOOK 8 OF MAPS, PAGE 83-2 & 83-3, MARIN COUNTY RECORDS.



2300 bethards drive, suite J
 santa rosa, california 95405
 p 707.542.8513 - f 707.542.1825
 www.michaelfordinc.com