

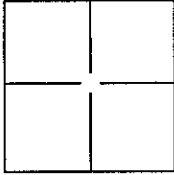
# CORNER RECORD

Document Number A.P.N. 177-262-02

City of San Anselmo

County of Marin, California

Brief Legal Description Lot 28 - Indian Rock Unit One 12 R.M. 91



### CORNER TYPE

Government Corner  Control   
Meander  Property   
Rancho  Other

Date of Survey \_\_\_\_\_

### COORDINATES(Optional)

N. \_\_\_\_\_  
E. \_\_\_\_\_  
Zone \_\_\_\_\_ NAD27  NAD83   
NAD83 Epoch \_\_\_\_\_  
Elev. \_\_\_\_\_  
Vert. Datum: NGVD29  NADV88   
Meas. Units: Metric  Imperial

Corner - Left as found  Found and tagged  Established  Reestablished  Rebuilt

Identification and type of corner found: Evidence used to identify or procedure used to establish or reestablish the corner:

Found monuments along Tomahawk Drive and Black Hawk Drive  
per 12 R.M. 91.

A description of the physical condition of the monument as found and as set or reset:

Found NE and NW corners and set SE corner. See Exhibit A.

### SURVEYOR'S STATEMENT

This Corner Record was prepared by me or under my direction in conformance with  
the Land Surveyor's Act on JULY 14, 2004

Signed [Signature] P.L.S. or R.C.E. No.: 18221

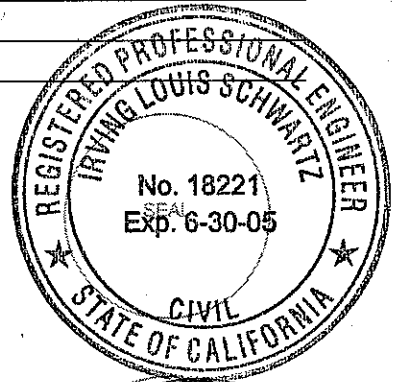
### COUNTY SURVEYOR'S STATEMENT

This Corner Record was received JULY 16, 2004 and examined  
and filed JULY 28, 2004

Signed [Signature] P.L.S. or R.C.E. No.: 7128

Title COUNTY SURVEYOR

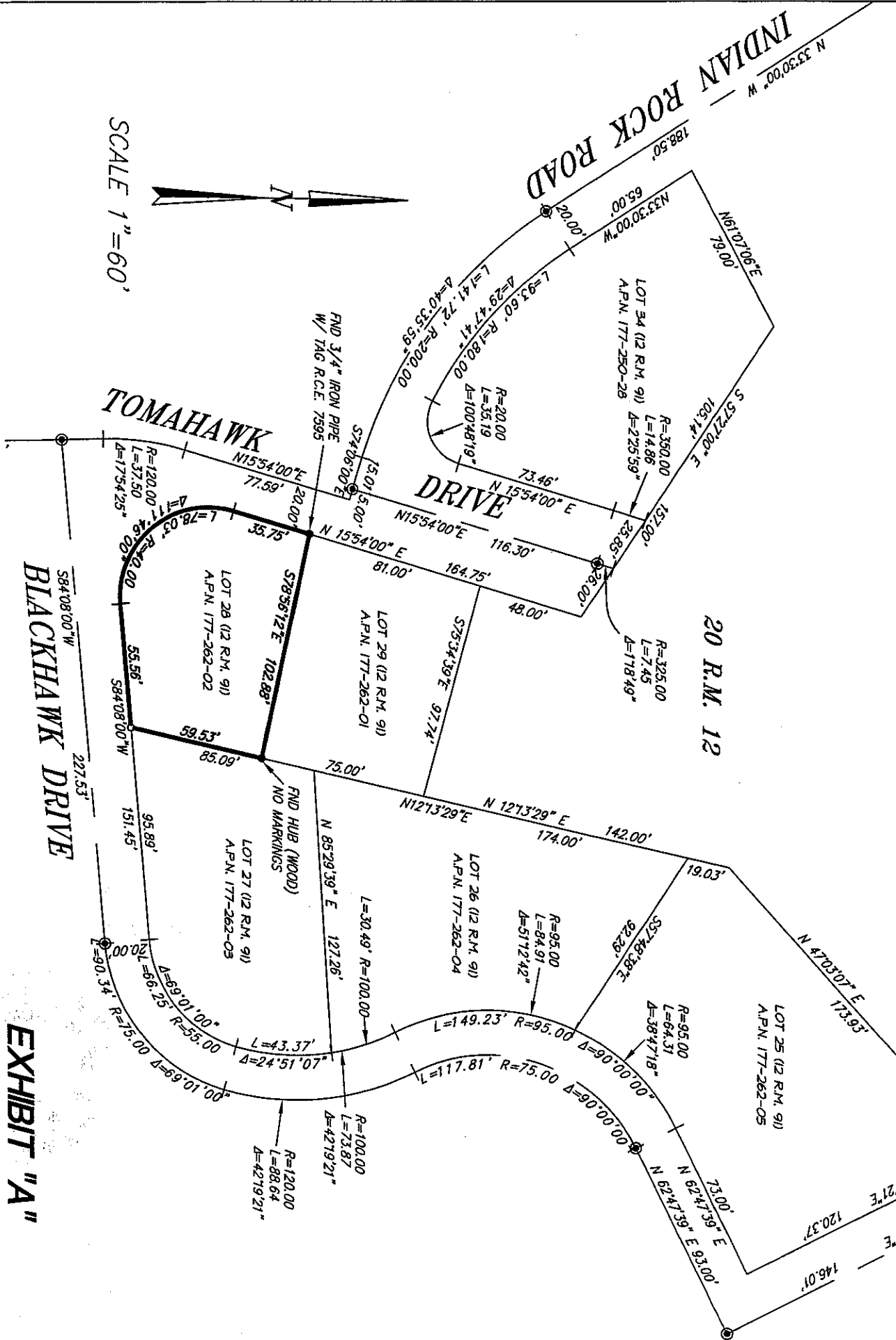
County Surveyor's Comment \_\_\_\_\_



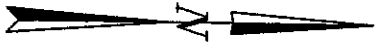
- LEGEND**
- FOUND MONUMENTS AS NOTED
  - SET 3/4" IRON PIPE & CAP "R.C.E. 10221"
  - ⊙ FOUND STANDARD STREET MONUMENT

**NOTE:**  
 ALL DIMENSIONS AND BEARINGS  
 SHOWN HEREON ARE PER 12 R.M. 91  
 EXCEPT AS NOTED OTHERWISE.

A.P.N. 177-262-02



SCALE 1"=60'



BLACKHAWK DRIVE

EXHIBIT "A"



**ILS ASSOCIATES, INC.®**  
 CIVIL ENGINEERING AND LAND SURVEYING

79 GULLBERRY SUITE A NOVATO, CA 94948-5177 (415)885-4200 FAX (415)885-2783