

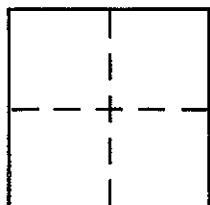
CORNER RECORD

Document Number APN 177-250-62

City of SAN ANSELMO

County of MARIN, California

Brief Legal Description LOT 12 OF 20/M/12



CORNER TYPE

Government Corner Control
Meander Property
Rancho Other
Date of Survey OCT 12, 2001

COORDINATES (Optional)

N. _____
E. _____
Zone _____ NAD27 NAD83
NAD83 Epoch _____
Elev. _____
Vert. Datum: NGVD29 NAVD88
Meas. Units: Metric Imperial

Corner - Left as found Found and tagged Established Reestablished Rebuilt

Identification and type of corner found: Evidence used to identify or procedure used to establish or reestablish the corner:

SEE PAGE 2

A description of the physical condition of the monument as found and as set or reset:

SEE PAGE 2

SURVEYOR'S STATEMENT

This Corner Record was prepared by me or under my direction in conformance with the Land Surveyor's Act on OCTOBER 16, 2001

Signed [Signature] P.L.S. or R.C.E. No. 6784

COUNTY SURVEYOR'S STATEMENT

This Corner Record was received OCTOBER 29, 2001

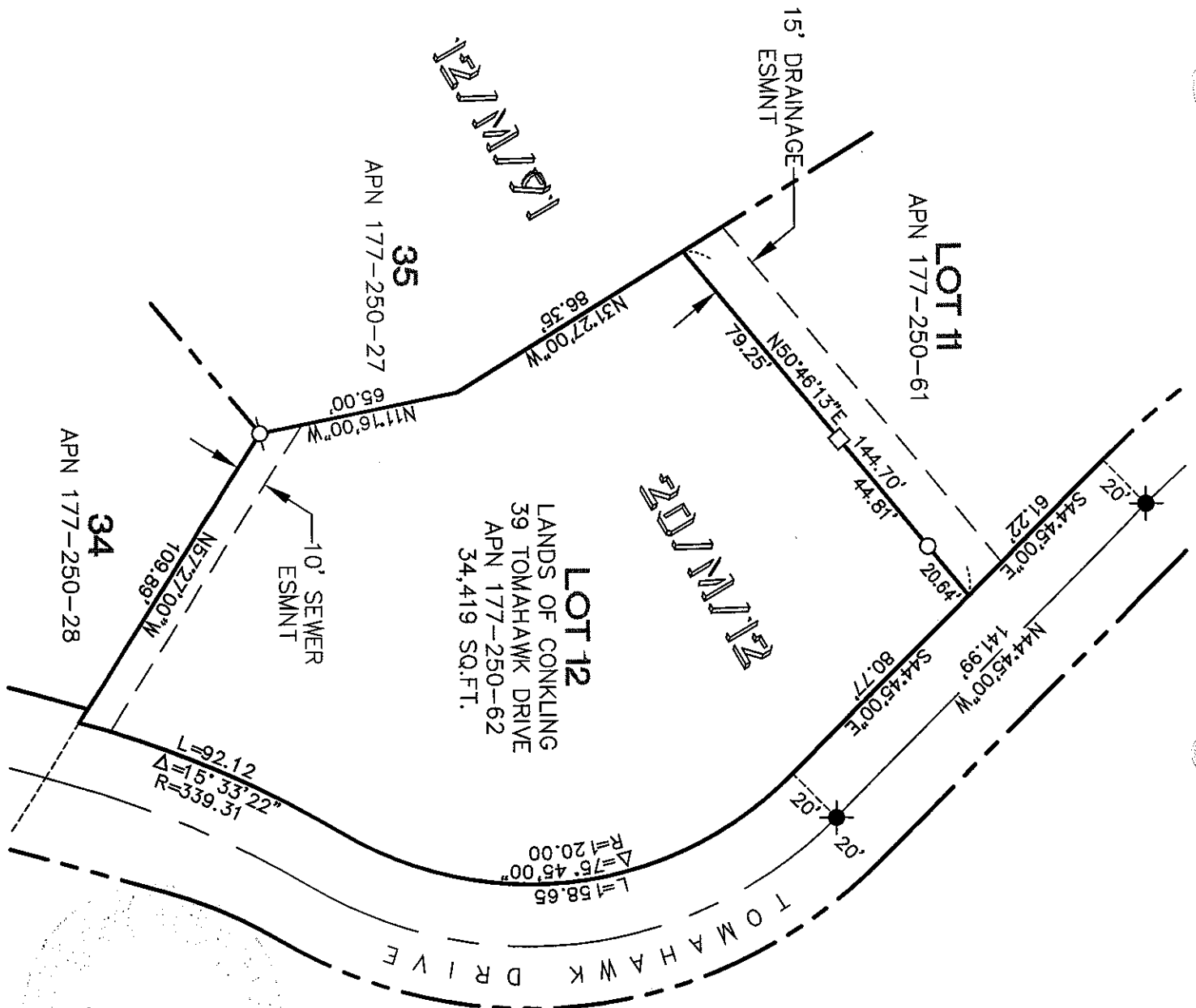
and examined and filed OCTOBER 30, 2001

Signed [Signature] P.L.S. or R.C.E. No. 7128

Title DEPUTY

County Surveyor's Comment _____





LOT 12
 LANDS OF CONKLING
 39 TOMAHAWK DRIVE
 APN 177-250-62
 34,419 SQ.FT.

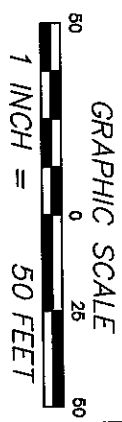
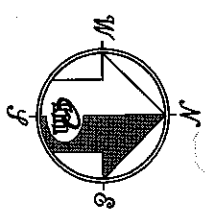
LOT 11
 APN 177-250-61

LOT 34
 APN 177-250-28

LOT 35
 APN 177-250-27

$L=158.65$
 $\Delta=75.45^{\circ}00'$
 $R=20.00'$

$L=92.12$
 $\Delta=15.33^{\circ}22'$
 $R=339.31'$



REFERENCE
 "MAP OF OLD QUARRY..." FILED FOR RECORD 5 MAY 1987 IN BOOK 20 OF MAPS, AT PAGE 12, OFFICIAL RECORD OF MARIN COUNTY.

LEGEND

- FOUND STANDARD MONUMENTS
- SET 5/8" REBAR WITH CAP, PLS 6784
- SET BRASS TACK & TAG IN LEAD PLUG, PLS 6784
- SET 2x2 HUB, BRASS TACK & TAG, PLS 6784

- NOTES**
1. RECORD=MEASURED
 2. SQUARE FOOTAGE PER MAP OF RECORD

01140 CONKLING
 CORNER RECORD

MERIDIAN SURVEYING ENGINEERING, INC.
 1812 UNION STREET
 SAN FRANCISCO, CA 94123
 (415) 440-4131
 info@meridiansurvey.com
 100 DRAKES LANDING RD, #164
 GREENHURST, CA 94123
 (415) 461-1241