

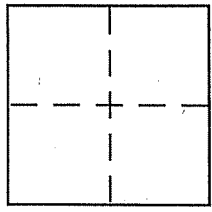
**CORNER RECORD**

City of San Anselmo

Document Number 177-250-61

County of Marin, California

Brief Legal Description Lot 11, R.M. 20-12



**CORNER TYPE**

Government Corner  Control   
Meander  Property   
Rancho  Other   
Date of Survey 7/24/07

**COORDINATES (Optional)**

N. \_\_\_\_\_  
E. \_\_\_\_\_  
Zone \_\_\_\_\_ NAD27  NAD83   
NAD83 Epoch \_\_\_\_\_  
Elev. \_\_\_\_\_  
Vert. Datum: NGVD29  NAVD88   
Meas. Units: Metric  Imperial

Corner - Left as found  Found and tagged  Established  Reestablished  Rebuilt

Identification and type of corner found: Evidence used to identify or procedure used to establish or reestablish the corner:

See page 2 of 2

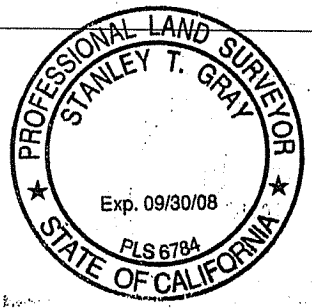
A description of the physical condition of the monument as found and as set or reset:

See page 2 of 2

**SURVEYOR'S STATEMENT**

This Corner Record was prepared by me or under my direction in conformance with the Land Surveyor's Act on AUGUST 1, 2007

Signed [Signature] P.L.S or R.C.E. No. 6784



**COUNTY SURVEYOR'S STATEMENT**

This Corner Record was received SEPTEMBER 7, 2007

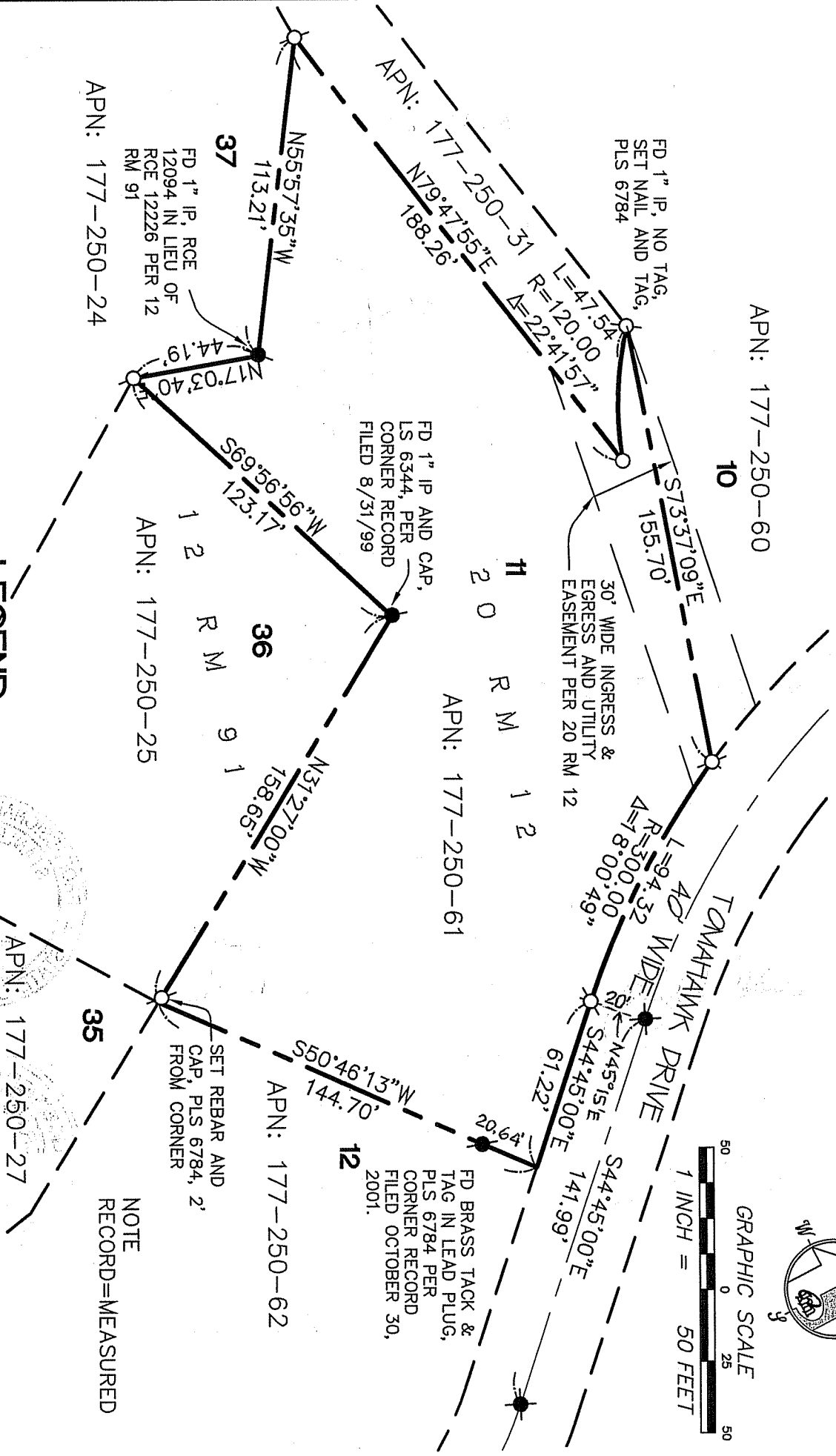
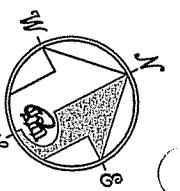
and examined and filed OCTOBER 2, 2007

Signed [Signature] P.L.S or R.C.E. No. 7128

Title COUNTY SURVEYOR



County Surveyor's Comment \_\_\_\_\_



**REFERENCE**  
 "MAP OF OLD QUARRY, SAN ANSELMO, CALIFORNIA" FILED FOR RECORD MAY 5, 1987 IN VOLUME 20 OF MAPS, AT PAGE 12, MARIN COUNTY RECORDS.

**LEGEND**

- FOUND CITY MONUMENT
- FOUND MONUMENT AS NOTED
- SET 5/8" REBAR WITH CAP, PLS 6784, EXCEPT AS NOTED
- SET MAG NAIL AND TAG, PLS 6784

**CORNER RECORD**

**MERIDIAN SURVEYING**  
 ENGINEERING, INC.

1812 UNION STREET  
 SAN FRANCISCO, CA 94123  
 (415) 440-4131 info@meridiansurvey.com

07075  
 777 GRAND AVENUE, SUITE 202  
 SAN RAFAEL, CA 94901  
 (415) 455-5450

NOTE  
 RECORD=MEASURED