

CORNER RECORD

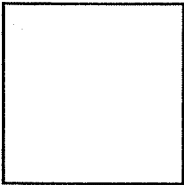
APN 177-250-19

Document No. 12 RM 91

City of San Anselmo

County of Marin, California

Brief Legal Description Lot 42, 12 RM 91



CORNER TYPE

COORDINATES (Optional)

Government Corner Control
Meander Property
Rancho Other
Date of Survey Sept. 11, 2007

N. _____
E. _____
Zone _____ Datum _____
Elev. _____

Corner- Left as found Found and tagged Established Reestablished Rebuilt

Identification and type of corner found: Evidence used to identify or procedure to establish or reestablish the corner: Established property corners on Lot 42 per found std. street monuments as shown on herein sht. 2 and per "Map of Indian Rock Unit One", recorded in Vol. 12 of Maps, Page 91, County of Marin.

A description of the physical condition of the monument as found and as set or reset: Set 1/2" iron pipe w/ plastic cap, LS 5461 at locations shown on herein sht. 2. Found standard street monuments, shown on herein sht. 2.

SURVEYOR'S STATEMENT

This Corner Record was prepared by me or under my direction in conformance with the Land Surveyors Act on Sept. 11, 2007.

Signed [Signature] PLS Number 5461

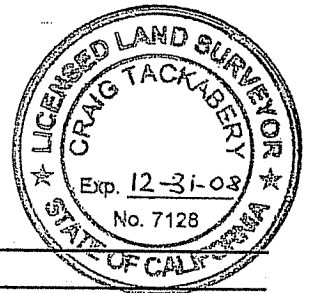


COUNTY SURVEYOR'S STATEMENT

This Corner Record was received SEPT. 14, 2007 and examined and filed OCTOBER 15, 2007.

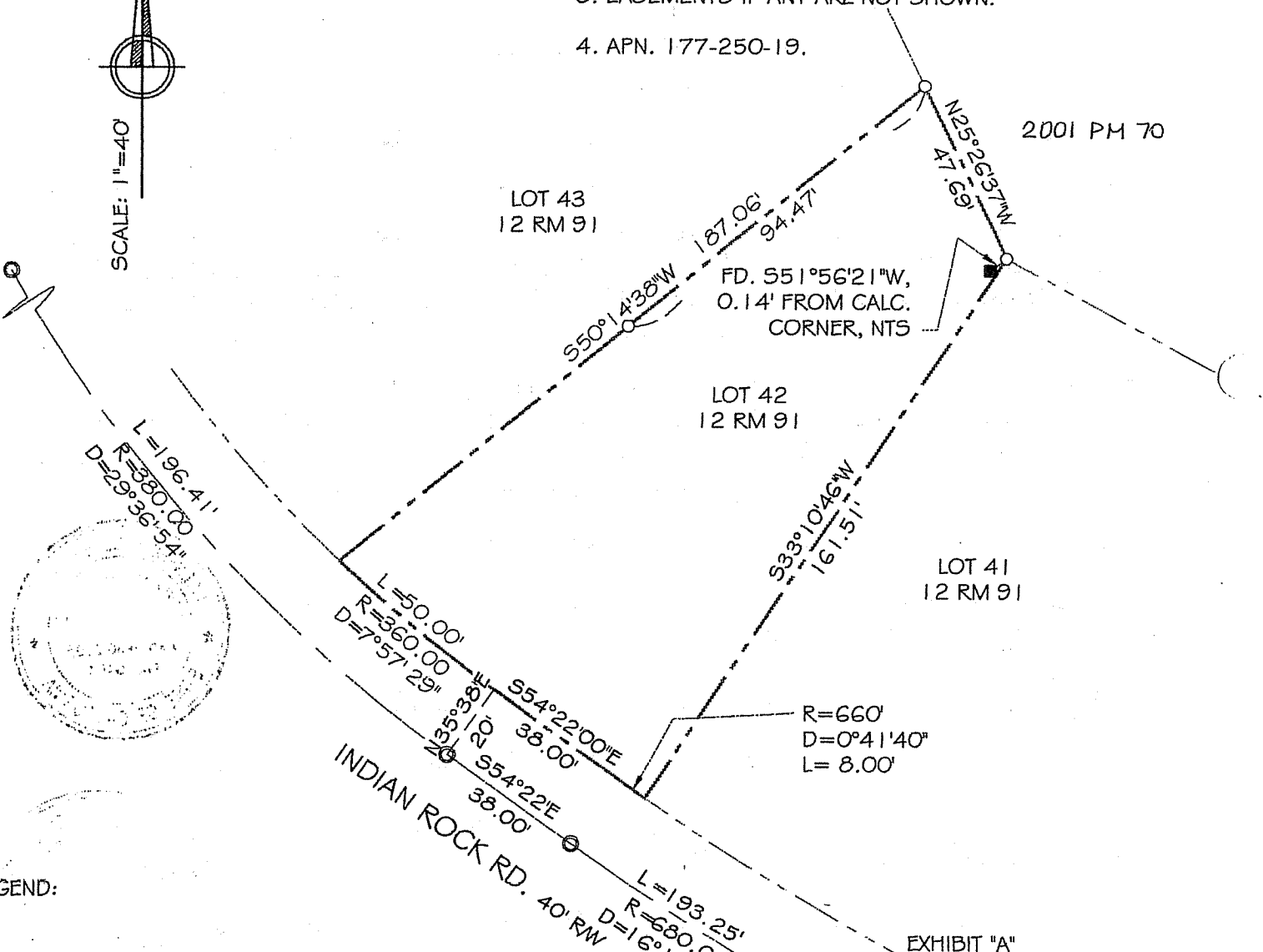
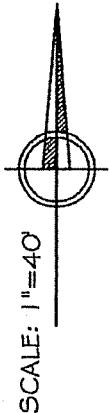
Signed [Signature] Title COUNTY SURVEYOR

County Surveyor's Comments _____



NOTE:

1. ALL DIMENSIONS SHOWN HEREIN ARE PER 12 RM 91 UNLESS OTHERWISE NOTED.
2. ALL DISTANCES AND DIMENSIONS ARE IN FEET AND DECIMALS THEREOF.
3. EASEMENTS IF ANY ARE NOT SHOWN.
4. APN. 177-250-19.



LEGEND:

- SET $\frac{1}{2}$ " IP W/ PL. CAP LS 5461 OR AS SHOWN
 - ⊙ FOUND STD. STREET MONUMENT
 - FOUND 2x2 HUB WITH NAIL PER 2001 PM 70
- 12 RM 91 SHOWS AN IRON PIPE SET

DAVID KEANE
 Professional Land Surveyors
 5710 Paradise Drive, Ste. 8
 Corte Madera, CA 94925
 tel: (415) 927-8801 fax: (415) 927-8802