

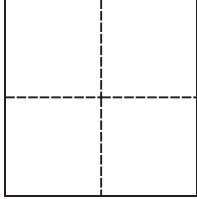
CORNER RECORD

Agency Index CR23-003

Document Number 177-250-10

City of San Anselmo County of Marin, California

Brief Legal Description Set monuments at southwest and southeast corners of APN 177-250-10



CORNER TYPE

Government Corner Control
Meander Property
Rancho Other

Date of Survey Dec. 02, 2022

COORDINATES (Optional)

N. _____ E. _____

Elevation _____

Units Metric U.S. Survey Foot

Horizontal Datum _____

Zone _____ Epoch Date _____

Vertical Datum _____

Complies with Public Resources Code §§8801-8819

Complies with Public Resources Code §§8890-8902

PLS Act Ref.: 8765(d) 8771 8773 Other:

Corner/Monument: Left as found Established Rebuilt Pre-Construction

Found and tagged Reestablished Referenced Post-Construction

Narrative of corner identified and monument as found, set, reset, replaced, or removed:

See sheet #2 for description(s):

Found centerline well monuments in good condition per Record Map 12-88, Map of Indian Rock Unit Two, Marin County Records.

Set monuments at southwest and southeast corners of Parcel 52 of Record Map 12-88, as shown on page 2.

SURVEYOR'S STATEMENT

This Corner Record was prepared by me or under my direction in conformance with the Professional Land Surveyors' Act on December 10, 2022.

Signed John C. Pawson P.L.S. or R.C.E. No. PLS 9077



COUNTY SURVEYOR'S STATEMENT

This Corner Record was received February 09, 2023

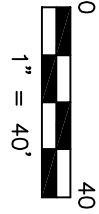
and examined and filed February 10, 2023.

Signed T.W. Park P.L.S. 8176 No. 8176

Title County Surveyor

County Surveyor's Comment

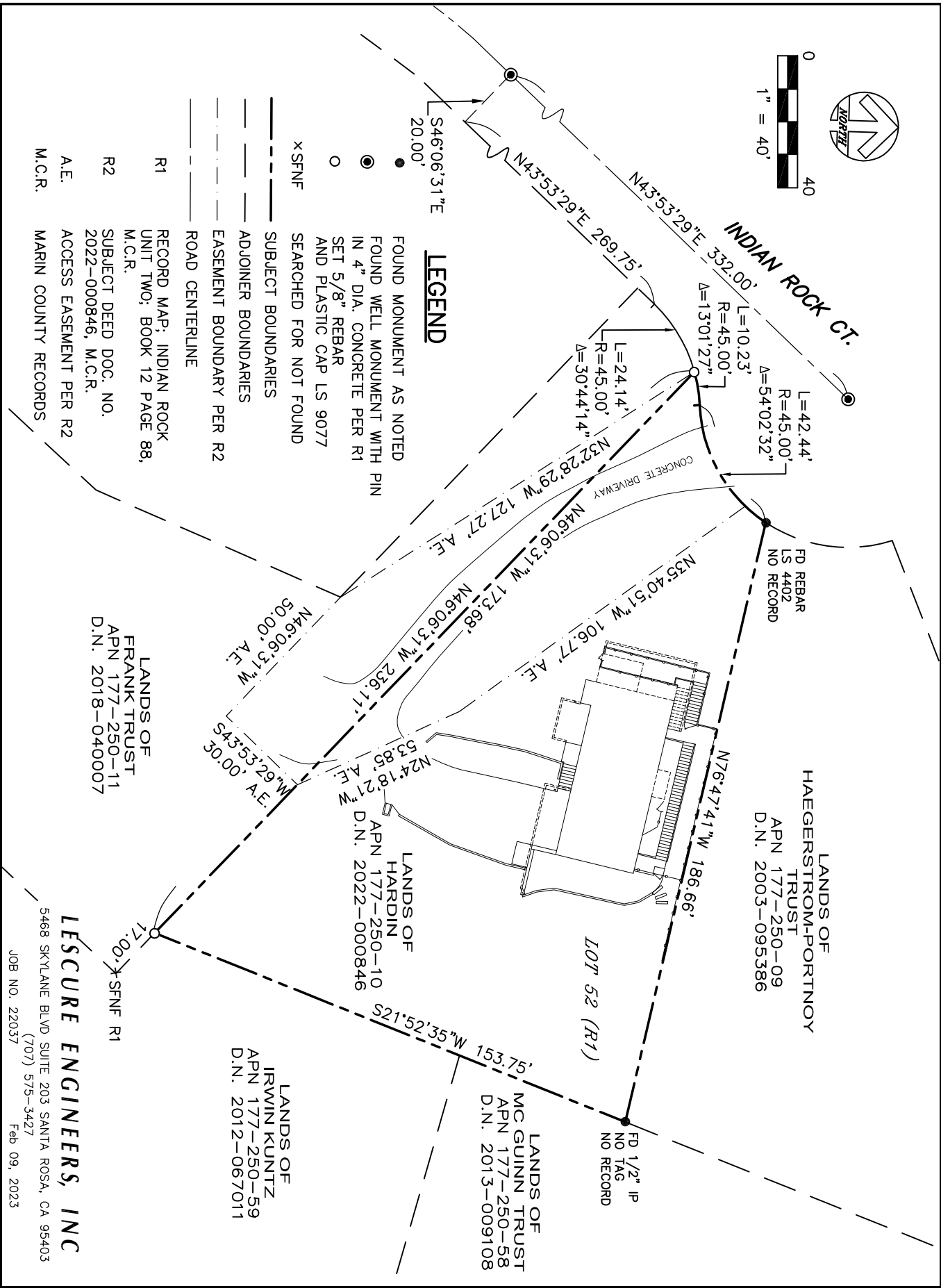




- R1 RECORD MAP: INDIAN ROCK UNIT TWO; BOOK 12 PAGE 88, M.C.R.
- R2 SUBJECT DEED DOC. NO. 2022-000846, M.C.R.
- A.E. ACCESS EASEMENT PER R2
- M.C.R. MARIN COUNTY RECORDS

LEGEND

- FOUND MONUMENT AS NOTED
- FOUND WELL MONUMENT WITH PIN IN 4" DIA. CONCRETE PER R1 SET 5/8" REBAR AND PLASTIC CAP LS 9077
- SEARCHED FOR NOT FOUND
- SUBJECT BOUNDARIES
- ADJOINER BOUNDARIES
- EASEMENT BOUNDARY PER R2
- ROAD CENTERLINE



LANDS OF
FRANK TRUST
APN 177-250-11
D.N. 2018-040007

LANDS OF
HARDIN
APN 177-250-10
D.N. 2022-000846

LANDS OF
IRWIN KUNTZ
APN 177-250-59
D.N. 2012-067011

LANDS OF
MC GUINN TRUST
APN 177-250-58
D.N. 2013-009108

LANDS OF
HAEGERSTROM-PORTNOY
TRUST
APN 177-250-09
D.N. 2003-095386

LESCURE ENGINEERS, INC

5468 SKYLANE BLVD SUITE 203 SANTA ROSA, CA 95403
(707) 575-3427
JOB NO. 22037
Feb 09, 2023