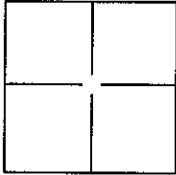


CORNER RECORD

Document Number APN 177-190-13,14,15,16
City of San Anselmo County of Marin, California
Brief Legal Description Lands of Donald L. Nance, 5 PM 40



CORNER TYPE

Government Corner Control
Meander Property
Rancho Other

Date of Survey February 6, 2004

COORDINATES(Optional)

N. _____
E. _____
Zone _____ NAD27 AD83
NAD83 Epoch _____
Elev. _____
Vert. Datum: NGVD29 NADV88
Meas. Units: Metric Imperial

Corner - Left as found Found and tagged Established Reestablished Rebuilt

Identification and type of corner found: Evidence used to identify or procedure used to establish or reestablish the corner:

Found monuments along northerly property line and along easterly line per 10 RS 92 and 5 PM 40.

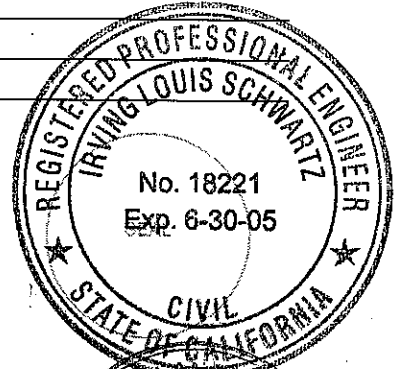
A description of the physical condition of the monument as found and as set or reset:

Set 3/4" I.P. and tag RCE 18221 unless shown otherwise on Exhibit A.

SURVEYOR'S STATEMENT

This Corner Record was prepared by me or under my direction in conformance with the Land Surveyor's Act on APRIL 21, 2004

Signed [Signature] P.L.S. or R.C.E. No.: 18221

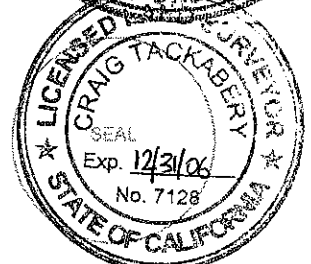


COUNTY SURVEYOR'S STATEMENT

This Corner Record was received MAY 10, 2004 and examined and filed MAY 11, 2004

Signed [Signature] P.L.S. or R.C.E. No.: 7128

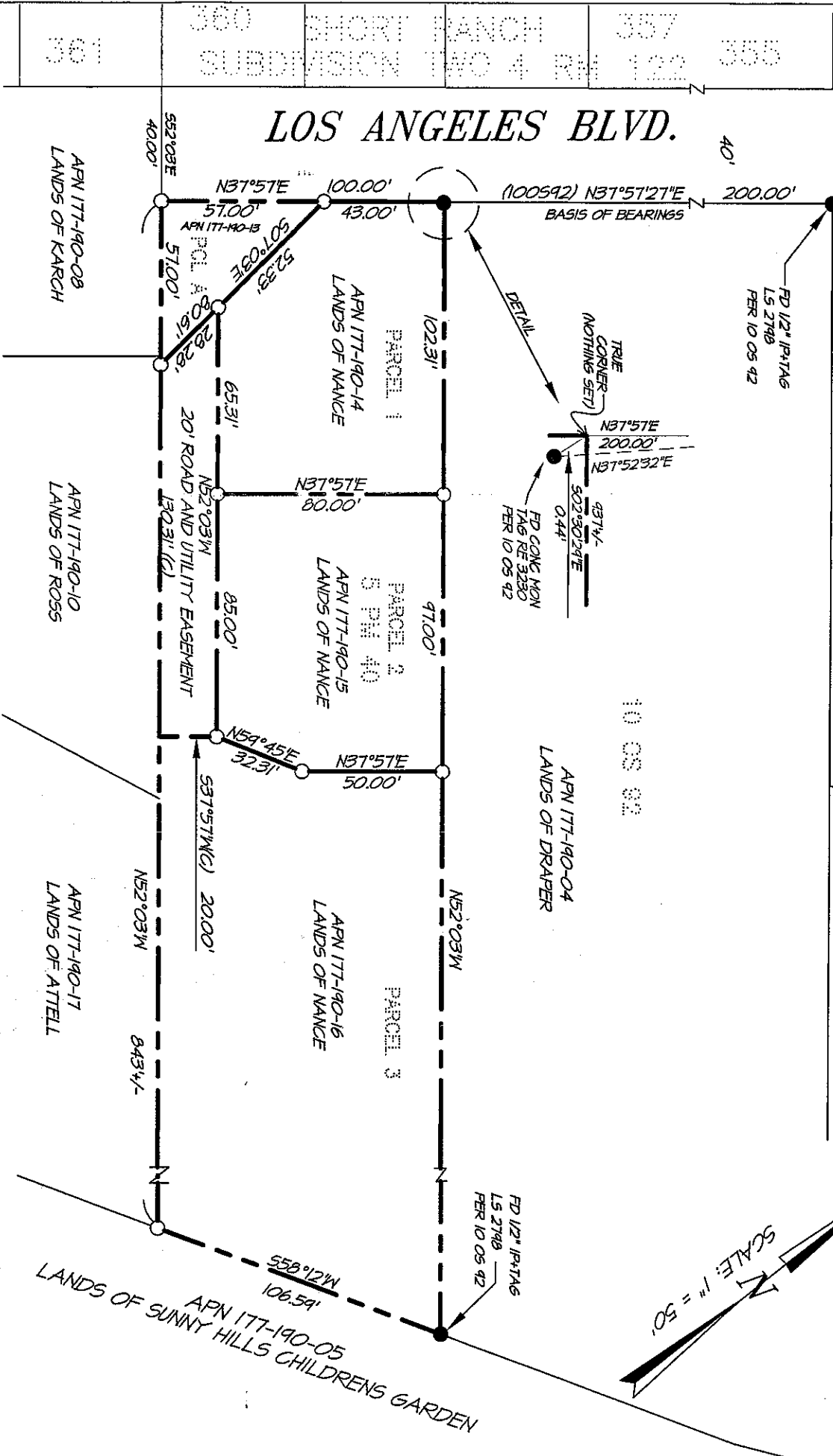
Title COUNTY SURVEYOR



County Surveyor's Comment It is my opinion that the filing of this Corner Record does not comply with the Business and Professions Code Section 8773.2(a) and 8765(d) because the dimensions of Parcel 3 were not defined in Parcel Map Book 5 Page 40 and there is material discrepancy with the adjacent Map 10 OS 92 where the Basis of Bearings for this Corner Record was established.

SACRAMENTO AVE.

LOS ANGELES BLVD.



LEGEND

- FOUND MONUMENTS AS NOTED
- SET 3/4" IRON PIPE & TAG "R.C.E. 18221"

NOTE:

ALL DIMENSIONS AND BEARINGS SHOWN HEREON ARE PER 5 PM 40 EXCEPT AS NOTED OTHERWISE.

DATE: 04/20/04
FILE: 75954-CORDMG

A.P.N. 177-190-13, 14, 15, 16



ILS ASSOCIATES, INC.®
CIVIL ENGINEERING AND LAND SURVEYING

79 QUALL DRIVE, SUITE A, NOVATO, CA 94948-5777 (415) 893-4200 FAX (415) 893-2788

EXHIBIT "A"

