



JERRICO ASSOCIATES

7025-1

CORNER RECORD

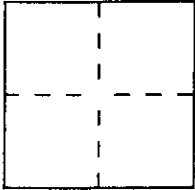
SUITE 27
77 MARK DRIVE
SAN RAFAEL, CA 94903

Document Number 177-140-04

City of San Anselmo

County of Marin, California

Brief Legal Description Hunter/Bossart 93-41391 (31 OS 98)
Freihofer 89-28690 Easement



CORNER TYPE

COORDINATES (Optional)

Government Corner Control
Meander Property
Rancho Other
Date of Survey July 6, 1998

N. _____
E. _____
Zone _____ Datum _____
Elev. _____

Corner — Left as found Found and tagged Established Reestablished Rebuilt

Identification and type of corner found: Evidence used to identify or procedure used to establish or reestablish the corner:
Northerly line per 31 OS 98 (see back).

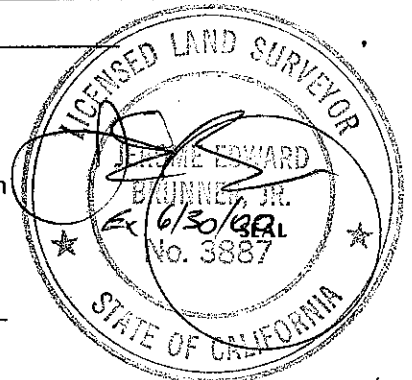
A description of the physical condition of the monument as found and as set or reset: _____

(A) Set spike nail (B) Set hub and tag LS 3887.
(C) (D) (E) Set hub and tack.

SURVEYOR'S STATEMENT

This Corner Record was prepared by me or under my direction in conformance with
the Land Surveyors' Act on July 6 19 98.

Signed [Signature] L.S. or R.C.E. Number LS 3887



COUNTY SURVEYOR'S STATEMENT

This Corner Record was received AUGUST 4 19 98 and examined
and filed AUGUST 5 19 98.

Signed [Signature] Title DEPUTY



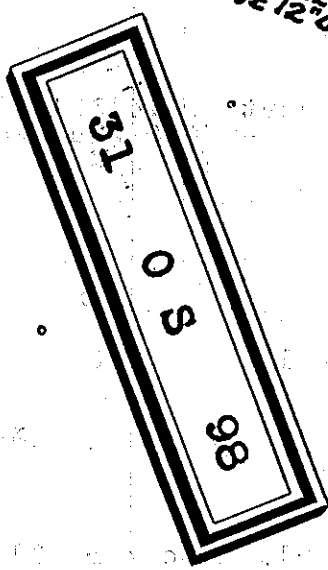
County Surveyor's Comment _____

TAYLOR
86-26585

EASEMENT AS PCL. D
90-45079

ADJ. BASIS OF MERIDIAN
S 79° 23' 05" E
137

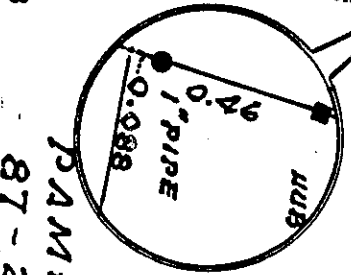
HUNTER
90-45079
93-41391
BOSSART



REBAR #5 17.40
NAIL UNDER-SIDE 12" OAK LIMB

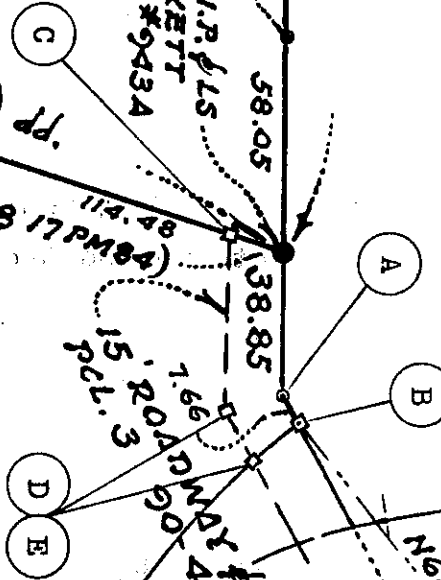
SPIKE NAIL FOUND 3/4 I.P. PLS
2738 LOCKETT REF. SURVEY #9434

HUB TO PIPE BASIS OF MERIDIAN
28° 25' 4" 336.926 (329.606) ADJ.



PAMFILOFF
87-26878

FREIHOFFER
89-28690



UTILITY EASEMENT
N 72° 10' E (481.3) ADJ.
N 62° 29' 30" E (2) ADJ.
1.66
1.20
15.20
PCL. D

DRIVE EXT

