

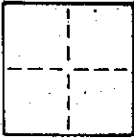
A.P. # 177-134-27

CORNER RECORD

COUNTY OF MARIN T. _____ R. _____ MERIDIAN CALIFORNIA

CORNER TYPE: GOVT. CORNER MEANDER RANCHO CONTROL OTHER

CORNER IDENTIFICATION — DATE OF VISIT _____ 19____



CORNER — LEFT AS FOUND FOUND AND TAGGED REESTABLISHED OBLITERATED CORNER REBUILT

PHYSICAL DESCRIPTION OF CORNER FOUND; EVIDENCE AND METHOD USED TO IDENTIFY OR REESTABLISH

SEE SKETCH BELOW

PHYSICAL DESCRIPTION OF MONUMENTS, REBUILT OR PERPETUATED

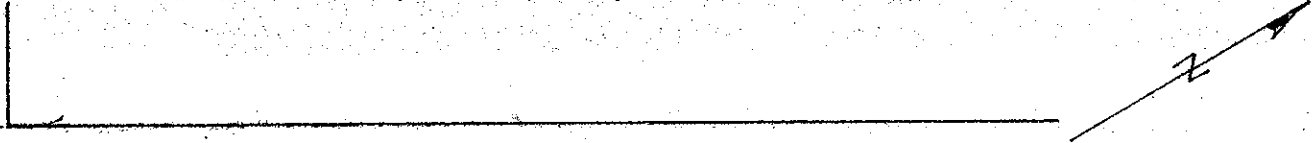
SET 3/4" COPPER PIPE WITH L.S. 2771 TAG AT THE MOST SOUTHERLY CORNER 85-046634. CORNER ESTABLISHED FROM FOUND CORNERS O.S. 12 PG. 26 & O.S. 19 PG. 87.
A.P. 177-134-27

CALIFORNIA COORDINATE SYSTEM ORDER: FIRST SECOND THIRD

STATIONS USED: NGS (USC & GS) STATE COUNTY OTHER STATION _____ STATION _____

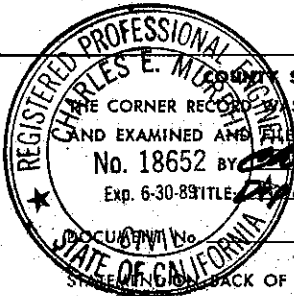
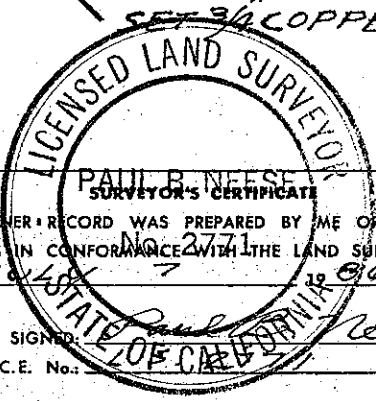
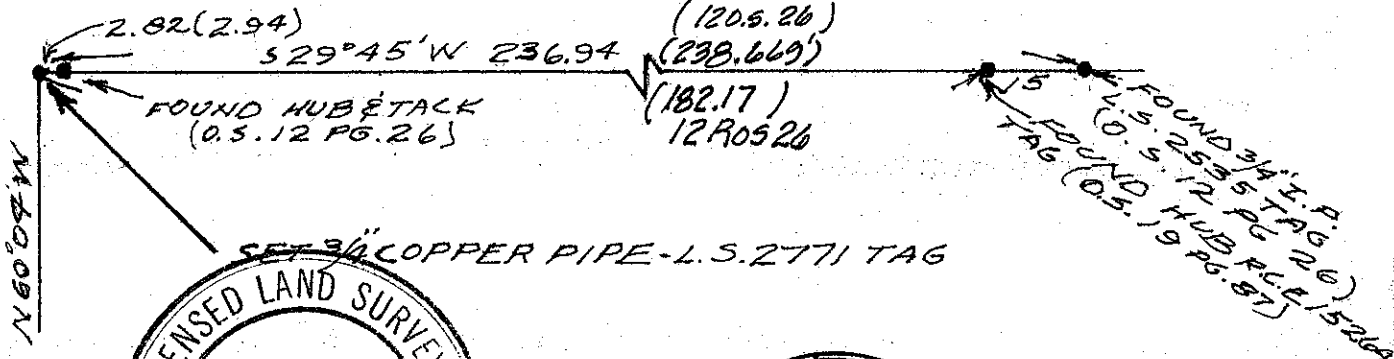
ZONE _____ ELEVATION _____ NORTHINGS (Y) _____ EASTINGS (X) _____

SKETCH: (Include reference tie or witness points, remarks and topo of area)



OAK CREST DRIVE

QUAIL WAY
(85-046634)



THIS CORNER RECORD WAS PREPARED BY ME OR UNDER MY DIRECTION IN CONFORMANCE WITH THE LAND SURVEYORS ACT ON Sept 7 1986

SIGNED: Paul B. Neese
L.S. or R.C.E. No. _____

REGISTERED PROFESSIONAL ENGINEER SURVEYOR'S CERTIFICATE
THIS CORNER RECORD WAS RECEIVED Sept. 22 1986
AND EXAMINED AND FILED Oct. 2 1986
No. 18652 BY Charles E. Murrell
Exp. 6-30-89 TITLE Deputy County Surveyor

SEAL

YES NO