

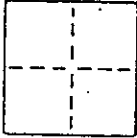
CORNER RECORD

10/1 A.P.#177-093-09

COUNTY OF MARIN T. \_\_\_\_\_ R. \_\_\_\_\_ MERIDIAN \_\_\_\_\_ CALIFORNIA

CORNER TYPE: GOVT. CORNER  MEANDER  RANCHO  CONTROL  OTHER

CORNER IDENTIFICATION — DATE OF VISIT AUGUST 22 1990



LYING WITHIN THE RANCHO CANADA DE HERRERA

CORNER — LEFT AS FOUND  FOUND AND TAGGED  REESTABLISHED OBLITERATED CORNER  REBUILT

PHYSICAL DESCRIPTION OF CORNER FOUND; EVIDENCE AND METHOD USED TO IDENTIFY OR REESTABLISH

FOUND HUBS AT FRONT CORNERS PER 8 PM 33  
AND CALCULATED RADIAL TIE TO SET ANGLE POINT.

*Apth* 177-093-09

PHYSICAL DESCRIPTION OF MONUMENTS REBUILT OR PERPETUATED

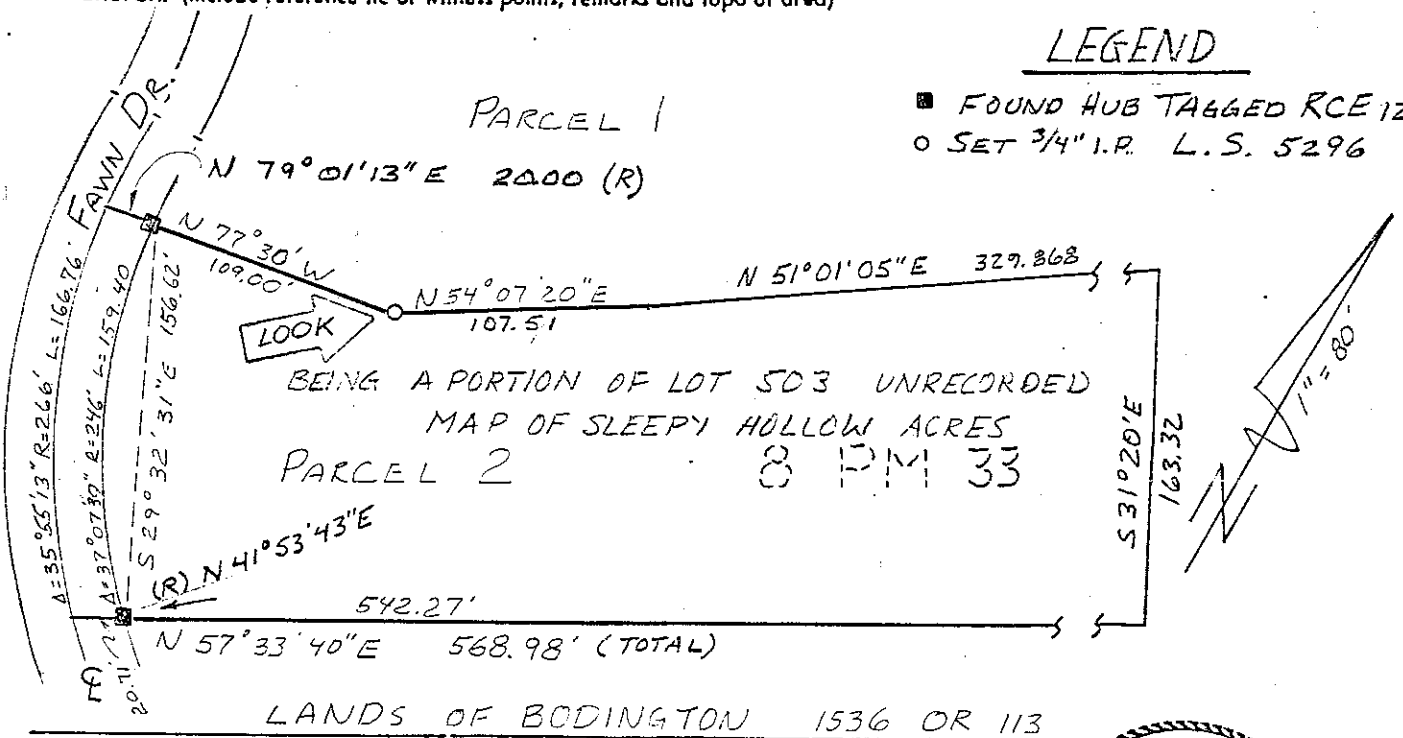
SET 3/4" IRON PIPE TAGGED L.S. 5296  
WITH 1"x2" MARKER AND LATH NEAR  
TOE OF SMALL CUT BANK RUNNING NORTHWEST  
SOUTHEAST.

CALIFORNIA COORDINATE SYSTEM ORDER: FIRST  SECOND  THIRD   
STATIONS USED: NGS (USC & GS)  STATE  COUNTY  OTHER  STATION \_\_\_\_\_ STATION \_\_\_\_\_  
ZONE \_\_\_\_\_ ELEVATION \_\_\_\_\_ NORTHINGS (Y) \_\_\_\_\_ EASTINGS (X) \_\_\_\_\_

SKETCH: (Include reference tie or witness points, remarks and topo of area)

LEGEND

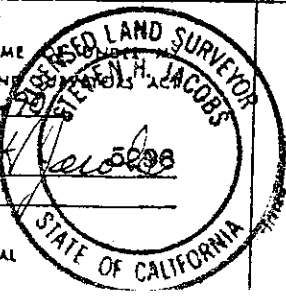
- FOUND HUB TAGGED RCE 1224
- SET 3/4" I.P. L.S. 5296



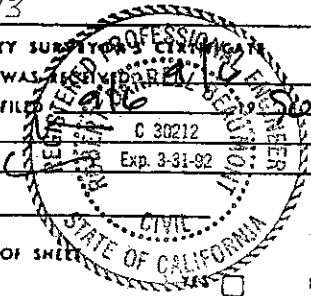
LANDS OF BODINGTON 1536 OR 113

SURVYOR'S CERTIFICATE

THIS CORNER RECORD WAS PREPARED BY ME  
DIRECTION IN CONFORMANCE WITH THE LAW  
ON AUGUST 28  
SIGNED: Steven Jacobs  
L.S. of R.C.E. No. L.S. 5296



COUNTY SURVEYOR'S CERTIFICATE  
THE CORNER RECORD WAS RECEIVED BY ME  
AND EXAMINED AND FILED  
BY: [Signature] C 30212  
TITLE: [Signature] Exp. 3-31-92  
DOCUMENT No. \_\_\_\_\_  
STATEMENT ON BACK OF SHEET \_\_\_\_\_



SEAL

NO