

# CORNER RECORD

Document Number A.P.# 177-081-21

City of SAN ANSELMO

County of MARIN, California

Brief Legal Description PARCEL 36-B 6 P.M. 1

### CORNER TYPE

Government Corner  Control   
 Meander  Property   
 Rancho  Other   
 Date of Survey 7/29/02

### COORDINATES (Optional)

N. \_\_\_\_\_  
 E. \_\_\_\_\_  
 Zone \_\_\_\_\_ NAD27  NAD83   
 NAD83 Epoch \_\_\_\_\_  
 Elev \_\_\_\_\_  
 Vert. Datum: NGVD29  NAVD88   
 Meas. Units: Metric  Imperial

Corner- Left as found  Found and tagged  Established  Reestablished  Rebuilt

Identification and type of corner found: Evidence used to identify or procedure used to establish or reestablish the corner:  
ESTABLISHED PROPERTY CORNERS BASED ON FOUND PIPES AND TAGS R.C.E. 11181 PER 6 P.M. 1

A description of the physical condition of the monument as found and as set or reset: SEE SHEET 2.

### SURVEYOR'S STATEMENT

This Corner Record was prepared by me or under my direction in conformance with  
 the Land Surveyor's Act on JULY 29 2002

Signed Lawrence P Doyle P.L.S. or R.C.E. No. P.L.S. 4694



### COUNTY SURVEYOR'S STATEMENT

This Corner Record was received AUGUST 2, 2002

and examined and filed AUGUST 9, 2002

Signed Coy P.L.S. or R.C.E. No. 7128

Title DEPUTY



County Surveyor's Comment \_\_\_\_\_

**LEGEND**

- SET 3/4" PIPE AND PLUG L.S. 4694
- ⊗ SET NAIL AND TAG L.S. 4694
- FD. 3/4" PIPE R.C.E. 11181 (UNLESS NOTED)

LOT 35

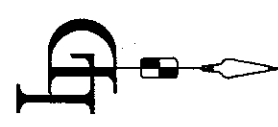
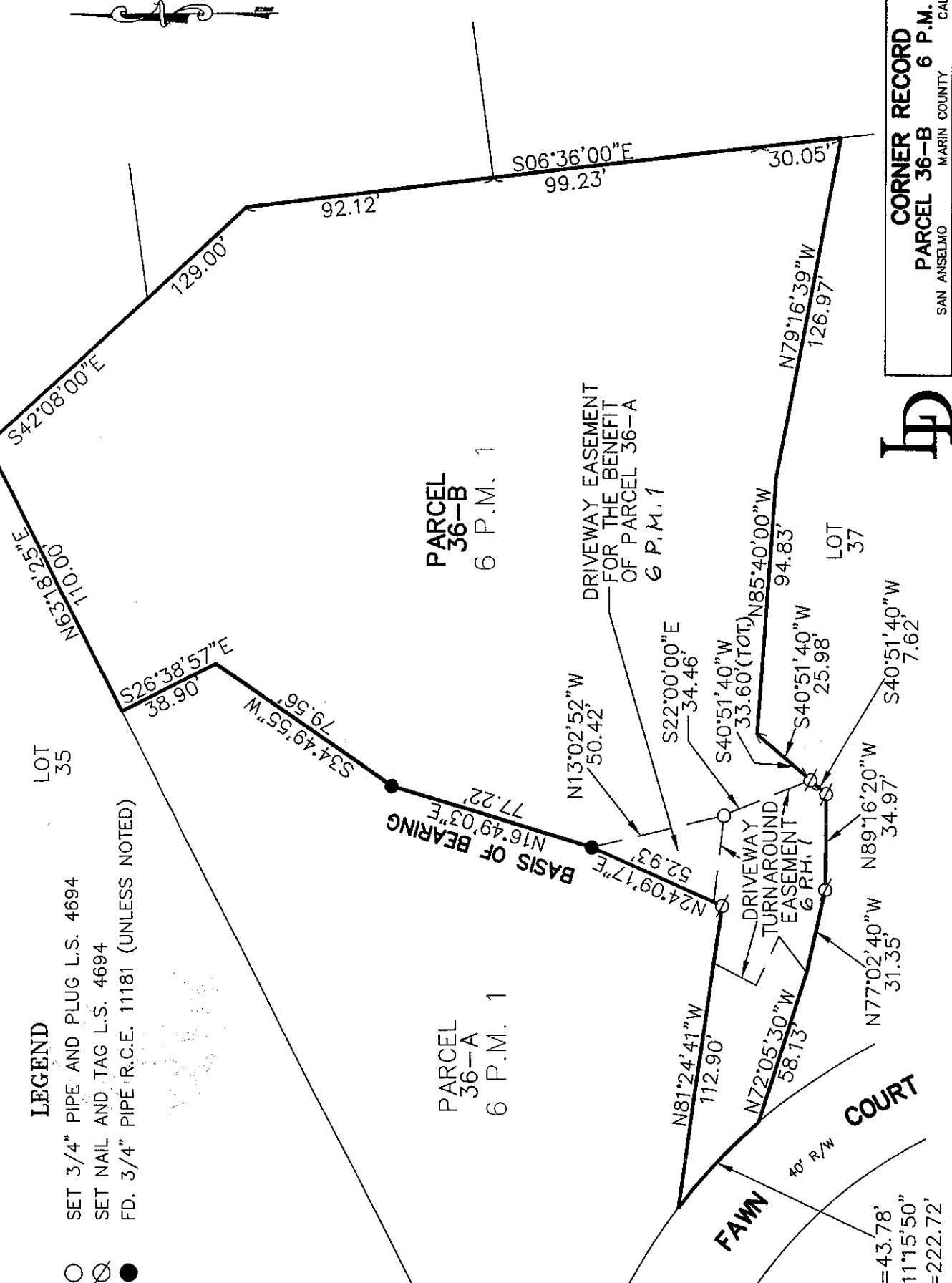
PARCEL 36-A  
6 P.M. 1

PARCEL 36-B  
6 P.M. 1

**COURT**

**FAWN**

L=43.78'  
Δ=11°15'50"  
R=222.72'



<b>CORNER RECORD</b>	
PARCEL 36-B 6 P.M. 1	
SAN ANSELMO MARIN COUNTY CALIFORNIA	SCALE: 1" = 50'
DRAWN BY: <b>LAWRENCE P. DOYLE</b>	SHEET 2 OF 2
LAND SURVEYOR/CIVIL ENGINEER	
P.O. BOX 1609 MILL VALLEY CA 94942 (415-388-9585)	
DRAWING NO. 1074-02	

**BASIS OF BEARING**

THE BASIS OF BEARING IS N16°49'03"E  
BETWEEN FOUND PIPES PER 6 P.M. 1