

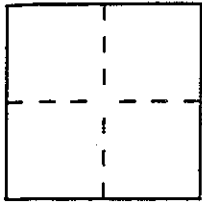
CORNER RECORD

Document Number A.P.N. 177-081-12

VICINITY
City of SLEEPY HOLLOW

County of MARIN, California

Brief Legal Description LOT 37-B, 6 P.M. 87



CORNER TYPE

Government Corner Control
Meander Property
Rancho Other
Date of Survey NOV. 27, 1999

COORDINATES (Optional)

N. _____
E. _____
Zone _____ Datum _____
Elev. _____

Corner — Left as found Found and tagged Established Reestablished Rebuilt

Identification and type of corner found: Evidence used to identify or procedure used to establish or reestablish the corner:

= SEE OVER =

A description of the physical condition of the monument as found and as set or reset:

= SEE OVER =

SURVEYOR'S STATEMENT

This Corner Record was prepared by me or under my direction in conformance with the Land Surveyors' Act on FEB. 22 2000 19__.

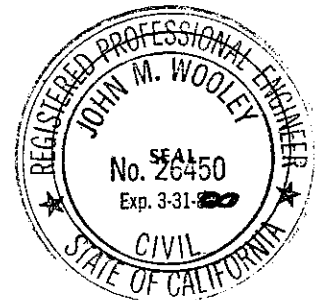
Signed David Contreras S. or R.C.E. Number 5065



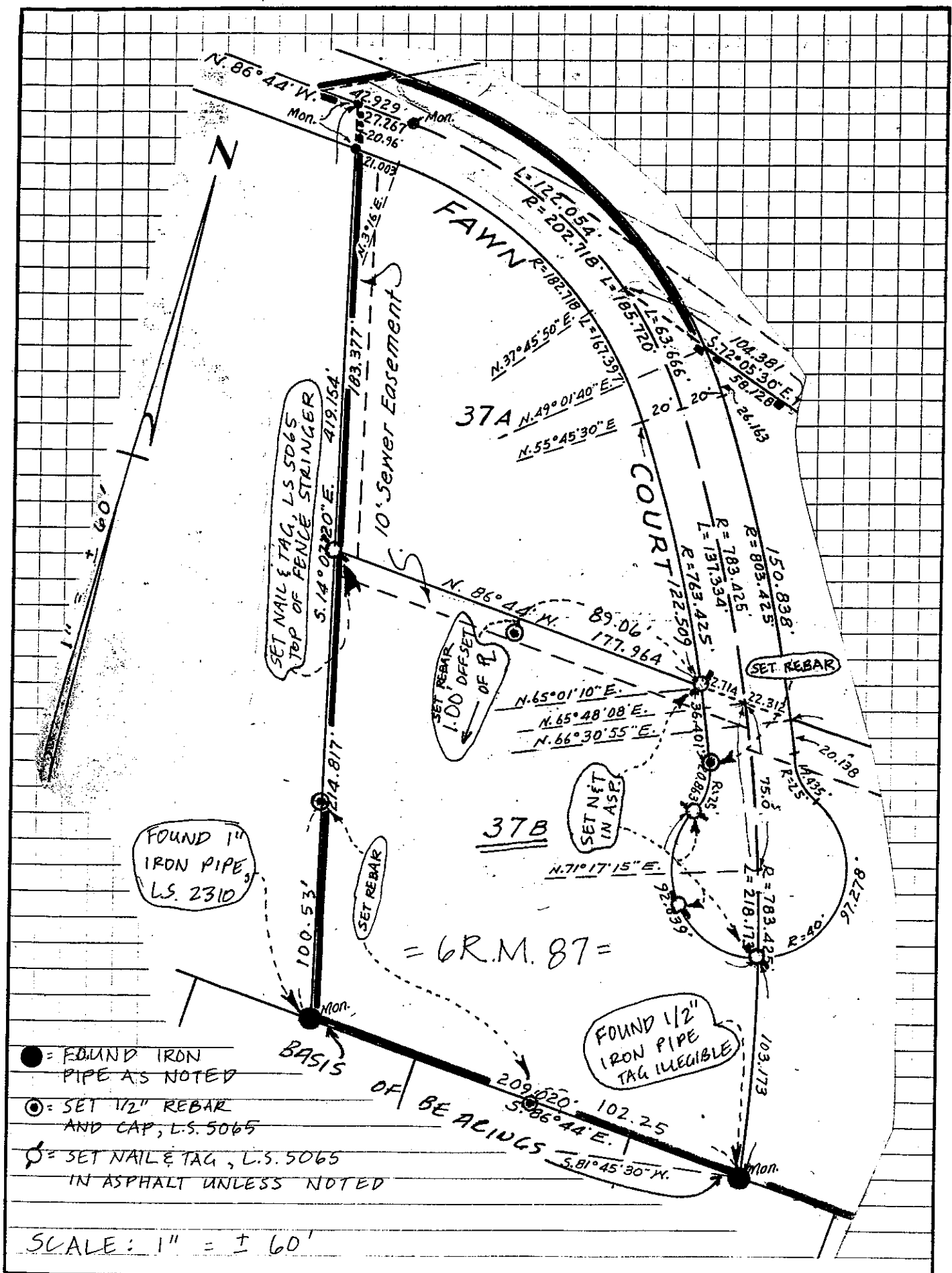
COUNTY SURVEYOR'S STATEMENT

This Corner Record was received 2-28-2000 19__ and examined and filed 2-29-2000 19__.

Signed John M. Wooley Title _____



County Surveyor's Comment _____



- = FOUND IRON PIPE AS NOTED
- = SET 1/2" REBAR AND CAP, L.S. 5065
- ⊙ = SET NAIL & TAG, L.S. 5065 IN ASPHALT UNLESS NOTED

SCALE: 1" = ± 60'