

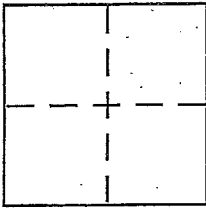
CORNER RECORD

Document Number 177-052-11

City of San Anselmo

County of MARIN, California

Brief Legal Description Monument @ Fawn Drive in SAN ANSELMO



CORNER TYPE

- Government Corner Control
- Meander Property
- Rancho Other
- Date of Survey _____

COORDINATES (Optional)

N. _____
 E. _____
 Zone _____ NAD27 NAD83
 NAD83 Epoch _____
 Elev. _____
 Vert. Datum: NGVD29 NAVD88
 Meas. Units: Metric Imperial

Corner - Left as found Found and tagged Established Reestablished Rebuilt

Identification and type of corner found: Evidence used to identify or procedure used to establish or reestablish the corner:

found "T" BAR Per the Record of Survey as Shown (Back of Page)
34 RS 49

A description of the physical condition of the monument as found and as set or reset:

Rebuilt "T" Bar after Pavement Reconstruction as A Standard County
Monument also Placed new Casings on other existing found "T" Bars.

SURVEYOR'S STATEMENT

This Corner Record was prepared by me or under my direction in conformance with the Land Surveyor's Act on 5-2-2015

Signed Michael C. Brogan P.L.S. or R.C.E. No. LS 5767



Michael C. Brogan

COUNTY SURVEYOR'S STATEMENT

This Corner Record was received MAY 7, 2015

and examined and filed MAY 18, 2015

Signed Ruth Smit P.L.S. or R.C.E. No. 7821

Title DEPUTY

County Surveyor's Comment _____

BASIS OF BEARINGS

THE BASIS OF BEARINGS FOR THIS SURVEY IS BETWEEN FOUND BOLT AND FOUND 'T' BAR AS SHOWN ON THE RECORD OF SURVEY "LAND OF KEAST" (17 OS 34) ON FAWN DRIVE S86°44'00"E.

NEW MONUMENT CASINGS

NEW MONUMENT CASINGS

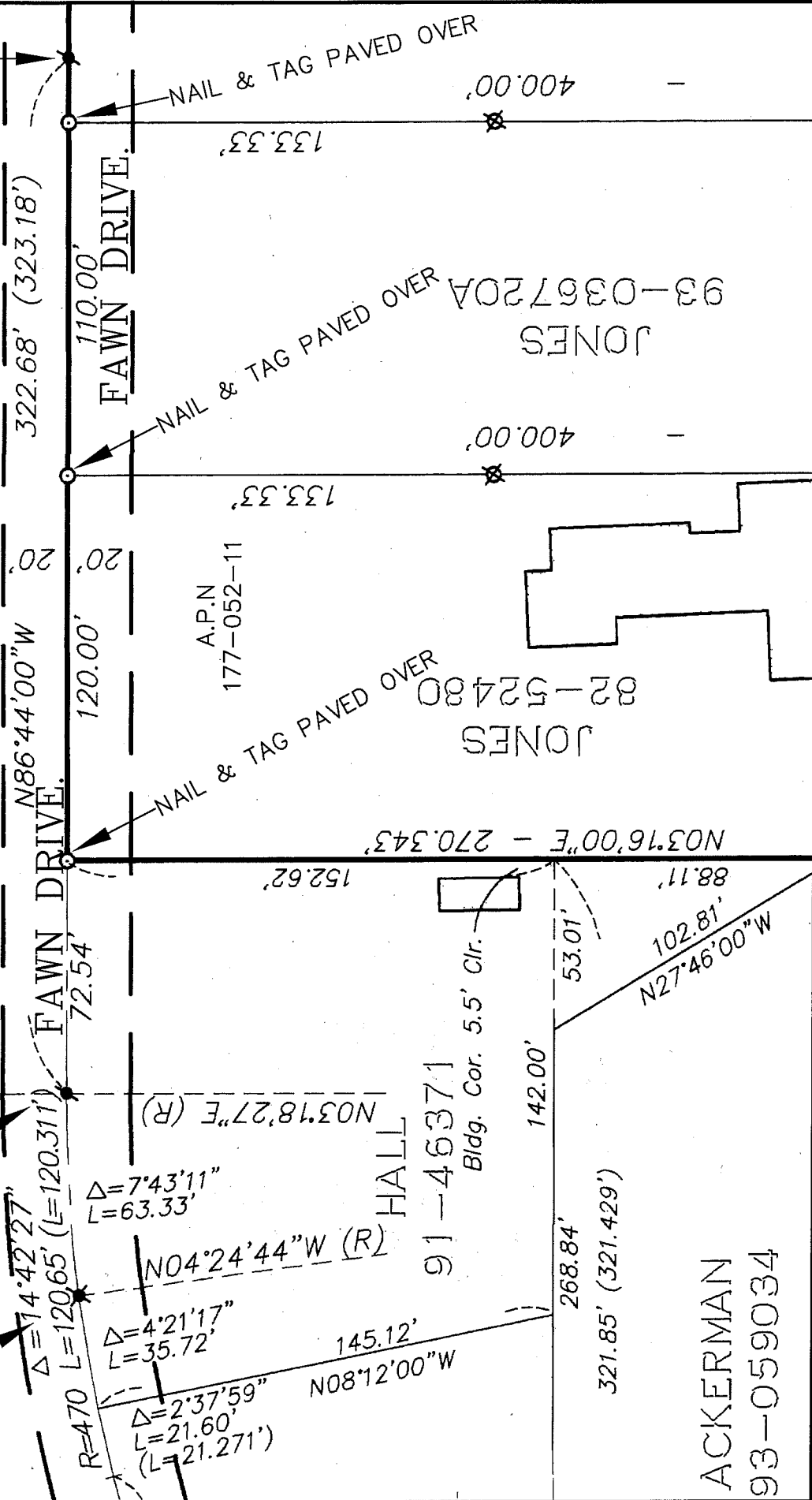
34 RS 49

17 O.S. 34

"T" BAR REPLACED WITH STANDARD COUNTY MONUMENT



BASIS OF BEARINGS



COUNTY OF MARIN
DEPARTMENT OF PUBLIC WORKS
SURVEY SECTION

SCALE: 1" = 50'

CORNER RECORD