

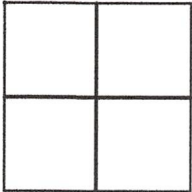
CORNER RECORD

Agency Index

DPW#19-124

Document Number

176-311-18

City of San AnselmoCounty of Marin, CaliforniaBrief Legal Description Southeasterly Line of Lot 18 per Map Filed in Book 9 of Maps at Page 72, M.C.R.**CORNER TYPE****COORDINATES (Optional)**

Government Corner ☐ Control
Meander ☐ Property
Rancho ☐ Other

N. _____ E. _____
☐ Elevation _____
☒ Units Metric ☐ U.S. Survey Foot ☒
☐ Horizontal Datum _____
Zone _____ Epoch Date _____
Vertical Datum _____

Date of Survey October 4, 2019☐ Complies with Public Resources Code §§8801-8819☐ Complies with Public Resources Code §§8890-8902PLS Act Ref: ☒ 8765(d) ☐ 8771 ☐ 8773 ☐ Other:

Corner/
Monument: ☐ Left as found ☒ Established ☐ Rebuilt ☐ Pre-Construction
☐ Found and tagged ☐ Reestablished ☐ Referenced ☐ Post-Construction

Narrative of corner identified and monument as found, set, reset, replaced, or removed:

☒ See sheet #2 for description (s):**SURVEYOR'S STATEMENT**

This Corner Record was prepared by me or under my direction in conformance with
the Professional Land Surveyors' Act on March 12, 2020

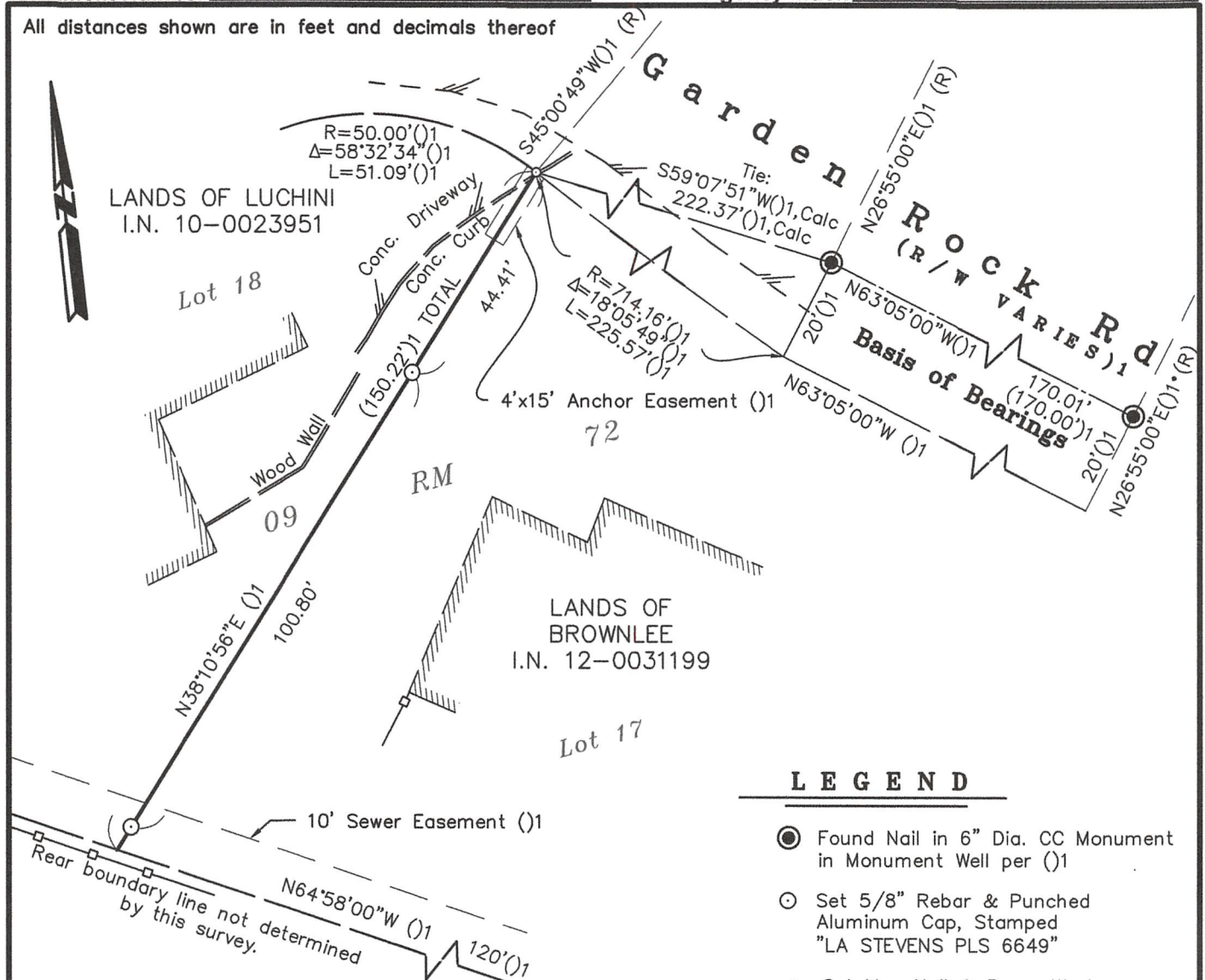
Signed [Signature] P.L.S. or R.C.E. No. 6649**COUNTY SURVEYOR'S STATEMENT**

This Corner Record was received _____
and examined and filed APR. 21, 2020

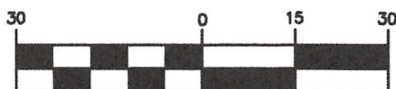
Signed [Signature] P.L.S. or R.C.E. No. 9292Title DEPUTY C.S.

County Surveyor's Comment _____

All distances shown are in feet and decimals thereof



GRAPHIC SCALE



(IN FEET)



3-12-2020

LEGEND

- Found Nail in 6" Dia. CC Monument in Monument Well per ()1
- Set 5/8" Rebar & Punched Aluminum Cap, Stamped "LA STEVENS PLS 6649"
- Set Mag Nail & Brass Washer, Stamped "LA STEVENS PLS 6649"

— / — Edge of Pavement

— Not to Scale

Calc Calculated Per Record Map

(R) Radial Bearing

()1 9 RM 72

Corner Record Lands of Luchini

(Southeasterly Line of Lot 18, 09 MAPS 72)

San Anselmo, Marin County California

Scale: 1" = 30'

September, 2019

L.A. Stevens & Associates, Inc.

Professional Land Surveyors * (415) 382-7713
7 Commercial Blvd., Suite 1 * Novato, CA 94949

Job # 191973

Lawrence A. Stevens, PLS 6649

Copyright © Lawrence A. Stevens 2019