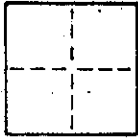


CORNER RECORD

COUNTY OF MARIN T. R. MERIDIAN CALIFORNIA
 CORNER TYPE: GOVT. CORNER ☐ MEANDER ☐ RANCHO ☐ CONTROL ☐ OTHER ☐
 CORNER IDENTIFICATION — DATE OF VISIT 9



A.P. # 176-311-14

CORNER — LEFT AS FOUND ☐ FOUND AND TAGGED ☐ REESTABLISHED OBLITERATED CORNER ☐ REBUILT ☐

PHYSICAL DESCRIPTION OF CORNER FOUND; EVIDENCE AND METHOD USED TO IDENTIFY OR REESTABLISH

BASED ON FOUND MONUMENTS AS SHOWN ON MAP FILED IN BOOK 6 OF
 MAPS AT PAGE 38. MARIN COUNTY
 RECORDS.

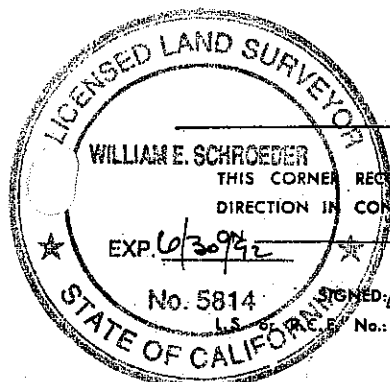
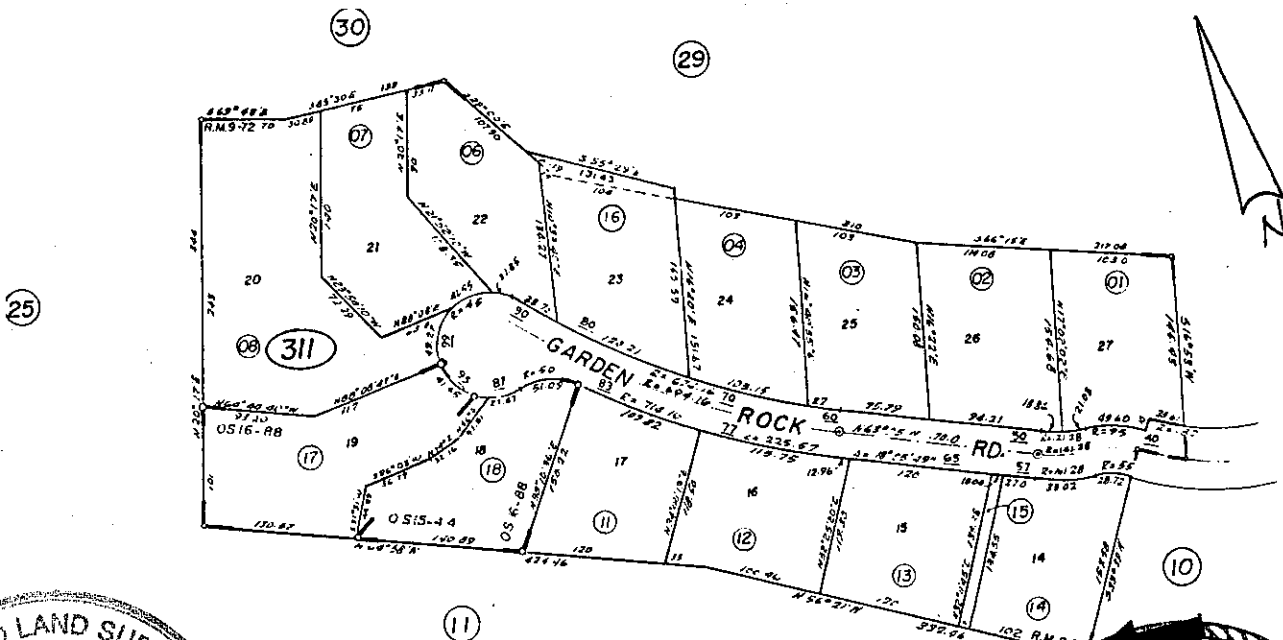
SLEEPY Hollow

PHYSICAL DESCRIPTION OF MONUMENTS REBUILT OR PERPETUATED

3/4" I.P. WITH PLASTIC CAP. TAG # LS 5814

CALIFORNIA COORDINATE SYSTEM ORDER: FIRST ☐ SECOND ☐ THIRD ☐
 STATIONS USED: NGS (USC & GS) ☐ STATE ☐ COUNTY ☐ OTHER ☐ STATION STATION
 ZONE ELEVATION NORTHINGS (Y) EASTINGS (X)

SKETCH: (Include reference tie or witness points, remarks and topo of area)



SURVEYOR'S CERTIFICATE
 THIS CORNER RECORD WAS PREPARED BY ME OR UNDER MY
 DIRECTION IN CONFORMANCE WITH THE LAND SURVEYORS ACT
 SIGNED: William Schroeder 19 92
 No.

COUNTY SURVEYOR'S CERTIFICATE
 THE CORNER RECORD WAS RECEIVED
 AND EXAMINED AND FILED 6/10/92
 BY:
 TITLE:
 DOCUMENT No.
 STATEMENT ON BACK OF SHEET
 Exp. 3-31-98
 CIVIL
 STATE OF CALIFORNIA

SEAL