

CORNER RECORD

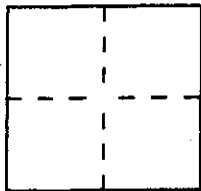
Document Number A.P. # 176-241-05

City of SAN ANSELMO

County of MARIN, California

Brief Legal Description LOT 10, MAP OF SLEEPY HOLLOW CREST 9 RM 57

A.P. 176-241-05



CORNER TYPE

Government Corner ☐ Control ☐
Meander ☐ Property ☒
Rancho ☐ Other ☐
Date of Survey _____

COORDINATES (Optional)

N. _____
E. _____
Zone _____ Datum _____
Elev. _____

Corner — Left as found ☐ Found and tagged ☐ Established ☐ Reestablished ☒ Rebuilt ☐

Identification and type of corner found: Evidence used to identify or procedure used to establish or reestablish the corner:

THE PROPERTY CORNERS WERE REESTABLISHED FROM
THE SURVEY STREET MONUMENTS AS DELINEATED
ON THE SUBDIVISION MAP 9 RM 57

A description of the physical condition of the monument as found and as set or reset: _____

SEE THE LEGEND ON PAGE 2

SURVEYOR'S STATEMENT

This Corner Record was prepared by me or under my direction in conformance with

the Land Surveyors' Act on OCTOBER 1997.

Signed Lawrence P. Doyle L.S. or R.C.E. Number 4694

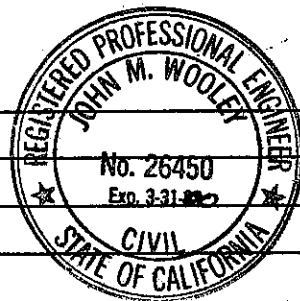
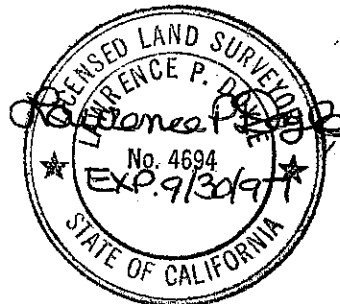
COUNTY SURVEYOR'S STATEMENT

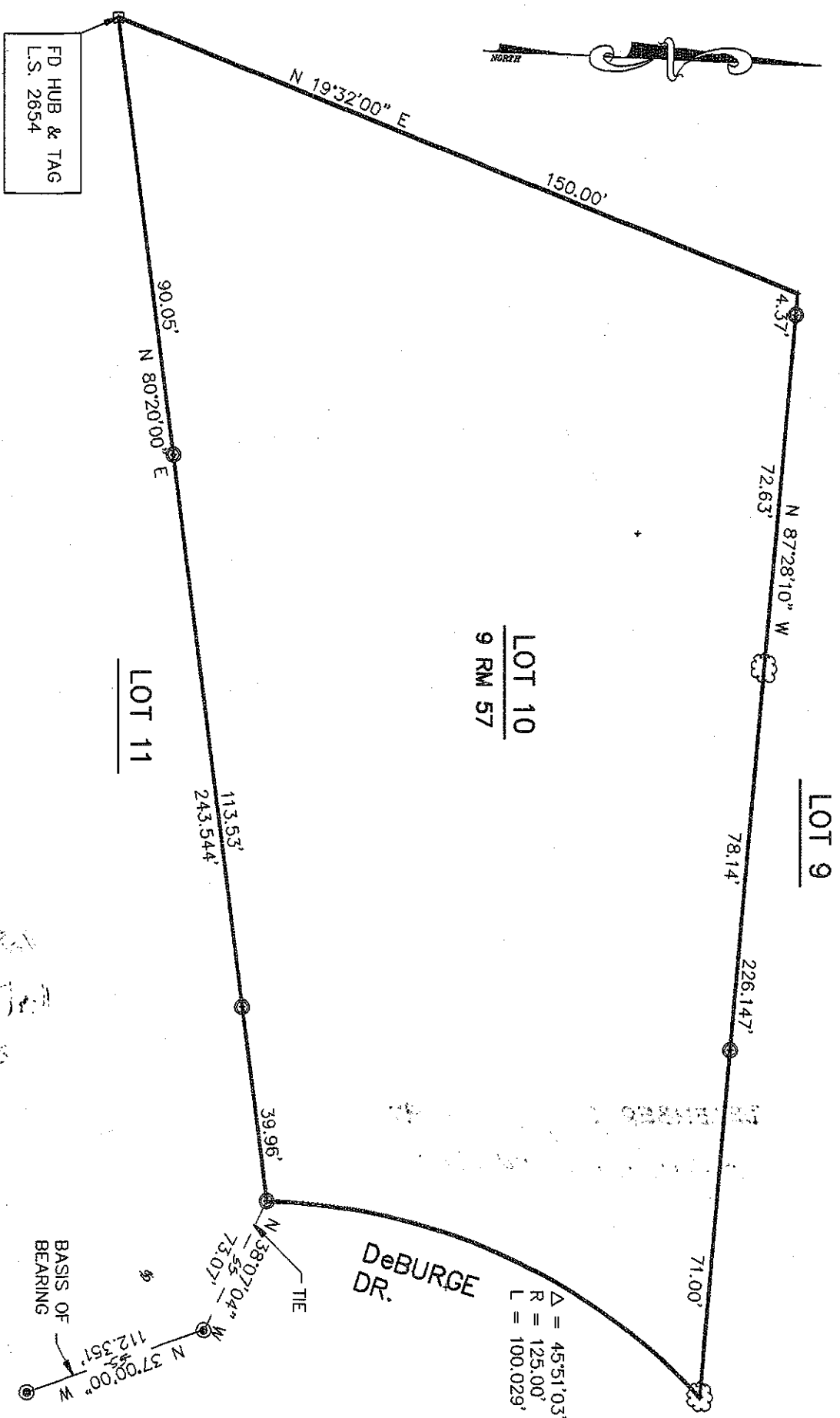
This Corner Record was received DECEMBER 1 1997 and examined

and filed DECEMBER 2 1997.

Signed John M. Woolley Title DEPUTY

County Surveyor's Comment _____





LOT 10
9 RM 57

LOT 9

LOT 11

FD HUB & TAG
L.S. 2654

LEGEND

- SET 1/2 REBAR & CAP
P.L.S. 4694
- ⊙ SET TAG ON TREE
- FOUND STREET MONUMENT



BOUNDARY SURVEY

LOT 10 9 RM 57 MARIN COUNTY, CA.

SCALE: 1"=20'

DATE: 9/2/92

LAWRENCE P. DOYLE

LAND SURVEYOR/CIVIL ENGINEER

P.O. BOX 7609 MILL VALLEY CA 94942 (415-388-9585)

DRAWN BY: LPD
SHEET 1 OF 1
DRAWING NO. 433-97