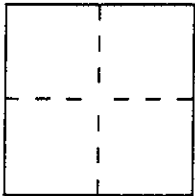


CORNER RECORD

Document Number AP# 176-221-11

City of San Anselmo County of Marin, California

Brief Legal Description Parcel 3 of 18 PM 43



CORNER TYPE

Government Corner ☐ Control ☐
Meander ☐ Property ☒
Rancho ☐ Other ☐
Date of Survey 6/10/98

COORDINATES (Optional)

N. _____
E. _____
Zone _____ Datum _____
Elev. _____

Corner — Left as found ☒ Found and tagged ☐ Established ☒ Reestablished ☐ Rebuilt ☐

Identification and type of corner found: Evidence used to identify or procedure used to establish or reestablish the corner:

Found original hubs per 18 PM 43.

A description of the physical condition of the monument as found and as set or reset: Ed Hubs as noted and set 1/2" bar & cap L.S. 5290 line points.

SURVEYOR'S STATEMENT

This Corner Record was prepared by me or under my direction in conformance with the Land Surveyors' Act on June 11th 19 98.

Signed David Harp L.S. or R.C.E. Number LS 5290



COUNTY SURVEYOR'S STATEMENT

This Corner Record was received June 12 19 98 and examined and filed June 15 19 98.

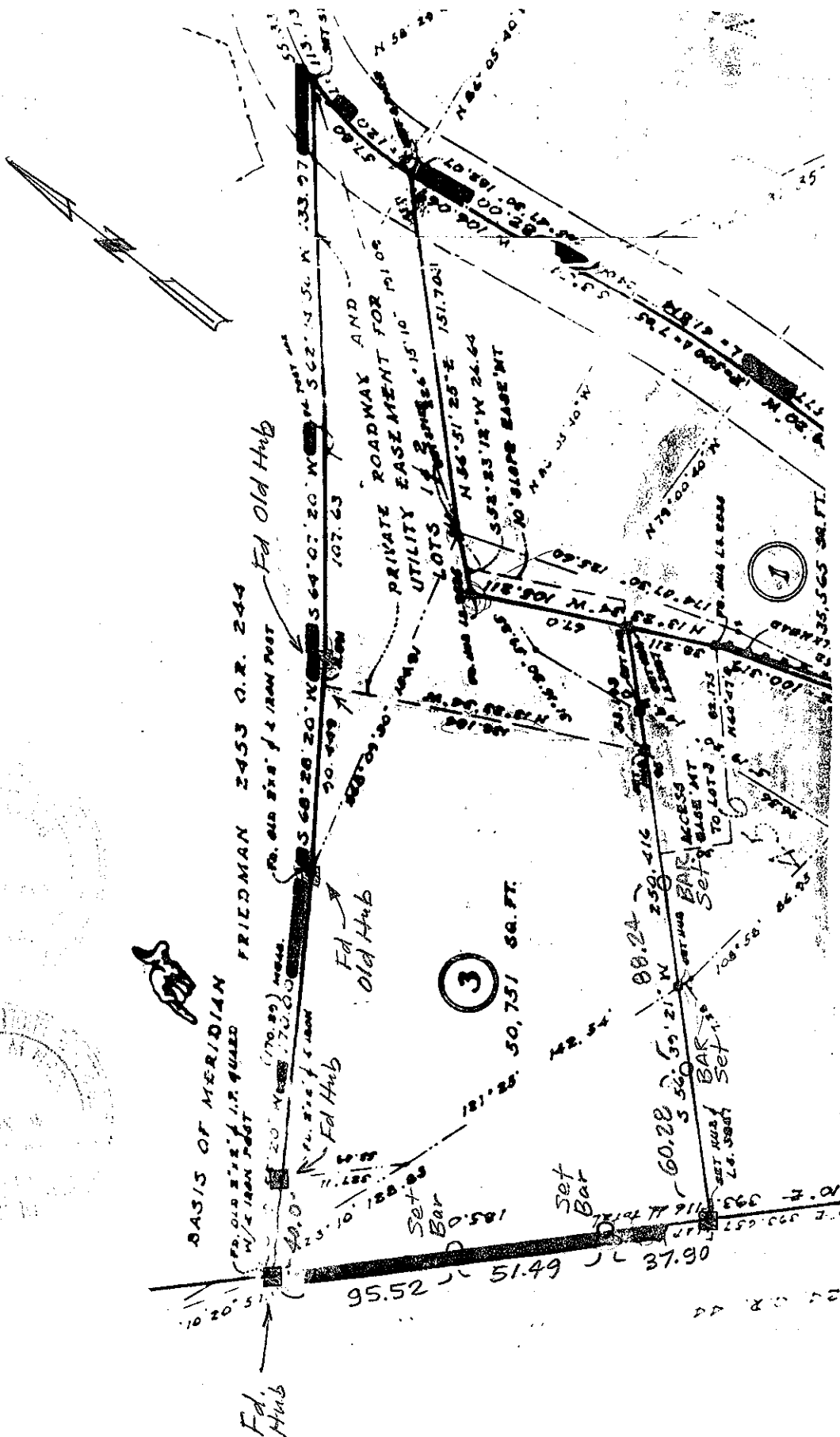
Signed John M. Woolley Title DEPUTY



County Surveyor's Comment _____

See Sketch (over)

LEGEND Rd.



" A PORTION OF
PARCEL MAP 18 PM 43 "
(not to scale)