



JERRICO ASSOCIATES  
SUITE 27  
77 MARK DRIVE  
SAN RAFAEL, CA 94903

A.P. #176-142-01

6642-A

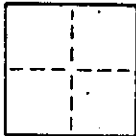
## CORNER RECORD

1/6

COUNTY OF Marin T. \_\_\_\_\_ R. \_\_\_\_\_ MERIDIAN \_\_\_\_\_ CALIFORNIA

CORNER TYPE: GOV'T. CORNER ☐ MEANDER ☐ RANCHO ☐ CONTROL ☐ OTHER ☐

CORNER IDENTIFICATION — DATE OF VISIT \_\_\_\_\_ 19\_\_\_\_



CORNER — LEFT AS FOUND ☐ FOUND AND TAGGED ☐ REESTABLISHED OBLITERATED CORNER ☐ REBUILT ☐

PHYSICAL DESCRIPTION OF CORNER FOUND; EVIDENCE AND METHOD USED TO IDENTIFY OR REESTABLISH

Found standard subdivision monuments, as shown.

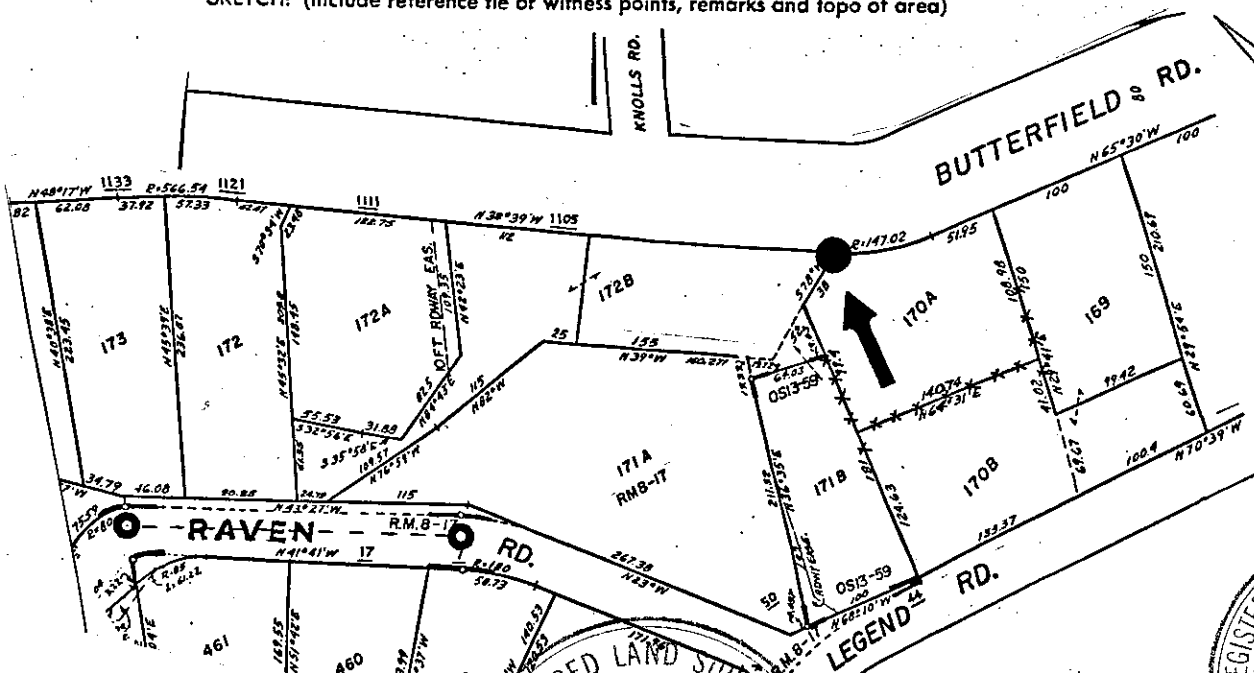
Map of Sleepy Hollow Oaks, 8 R.M. 17

PHYSICAL DESCRIPTION OF MONUMENTS REBUILT OR PERPETUATED

Set re-bar and cap L.S. 3887

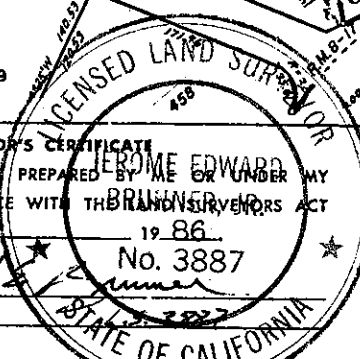
CALIFORNIA COORDINATE SYSTEM ORDER: FIRST ☐ SECOND ☐ THIRD ☐  
STATIONS USED: NGS (USC & GS) ☐ STATE ☐ COUNTY ☐ OTHER ☐ STATION \_\_\_\_\_ STATION \_\_\_\_\_  
ZONE \_\_\_\_\_ ELEVATION \_\_\_\_\_ NORTHINGS (Y) \_\_\_\_\_ EASTINGS (X) \_\_\_\_\_

SKETCH: (Include reference tie or witness points, remarks and topo of area)



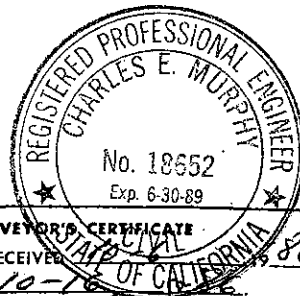
SURVEYOR'S CERTIFICATE  
THIS CORNER RECORD WAS PREPARED BY ME OR UNDER MY  
DIRECTION IN CONFORMANCE WITH THE LAND SURVEYORS ACT  
ON Sept, 29 1986

SIGNED: \_\_\_\_\_  
L.S. or R.C.E. No. \_\_\_\_\_

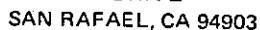


COUNTY SURVEYOR'S CERTIFICATE  
THE CORNER RECORD WAS RECEIVED  
AND EXAMINED AND FILED 10-16 OF CALIFORNIA 1986

BY: Charles E. Murphy  
TITLE: Land Dev Engr  
(DCR Co. Surveyor)  
DOCUMENT No. \_\_\_\_\_



STATEMENT ON BACK OF SHEET



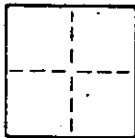
6642-A

## 2/6

CALIFORNIA

OTHER ☐

19

REBUILT ☐

PHYSICAL DESCRIPTION OF CORNER FOUND; EVIDENCE AND METHOD USED TO IDENTIFY OR REESTABLISH

Found standard subdivision monuments, as shown.

Map of Sleepy Hollow Oaks, 8 R.M. 17

PHYSICAL DESCRIPTION OF MONUMENTS REBUILT OR PERPETUATED

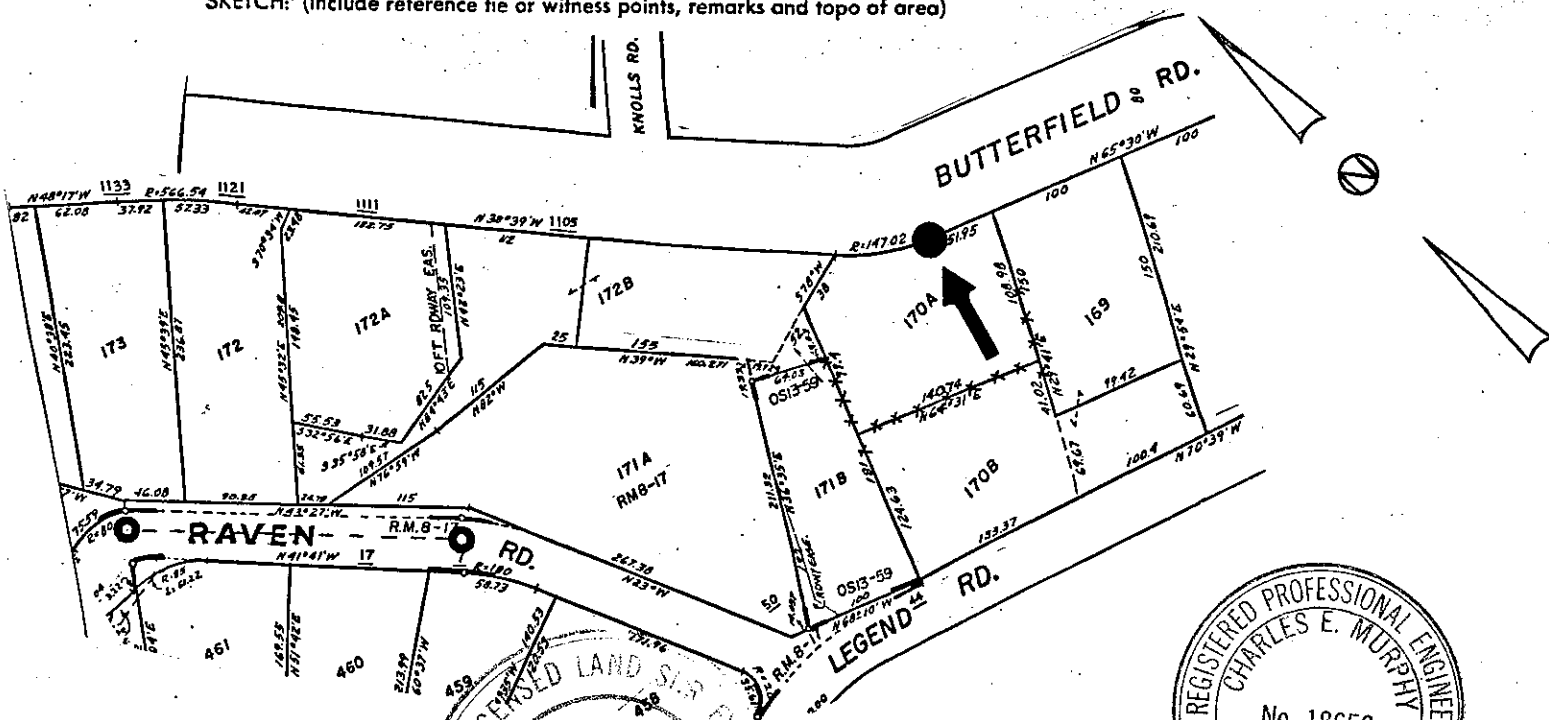
Set hub and tag L.S. 3887

THIRD [7

STATION

EASTINGS (X)

**SKETCH:** (Include reference tie or witness points, remarks and topo of area)



**SURVEYOR'S CERTIFICATE**

THIS CORNER RECORD WAS PREPARED BY ME FOR UNDER MY  
DIRECTION IN CONFORMANCE WITH THE LAND SURVEYORS ACT  
ON Sept. 29 1986

**SIGNED:**

L.S. or R.C.E. No.:

COUNTY SURVEYOR'S CERTIFICATE

THE CORNER RECORD WAS RECEIVED 10-6-86 19 86  
AND EXAMINED AND FILED APR 10 1986

BY:

TITLE: Dep. Co. Surveyor

DOCUMENT No.

STATEMENT ON BACK OF SHEET



JERRICO ASSOCIATES

SUITE 27  
77 MARK DRIVE  
SAN RAFAEL, CA 94903

176-142-01

6642-A

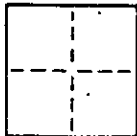
## CORNER RECORD

3/6

COUNTY OF Marin T. \_\_\_\_\_ R. \_\_\_\_\_ MERIDIAN \_\_\_\_\_ CALIFORNIA

CORNER TYPE: GOV'T. CORNER ☐ MEANDER ☐ RANCHO ☐ CONTROL ☐ OTHER ☐

CORNER IDENTIFICATION — DATE OF VISIT \_\_\_\_\_ 19\_\_\_\_



CORNER — LEFT AS FOUND ☐ FOUND AND TAGGED ☐ REESTABLISHED OBLITERATED CORNER ☐ REBUILT ☐

PHYSICAL DESCRIPTION OF CORNER FOUND; EVIDENCE AND METHOD USED TO IDENTIFY OR REESTABLISH

Found standard subdivision monuments, as shown.

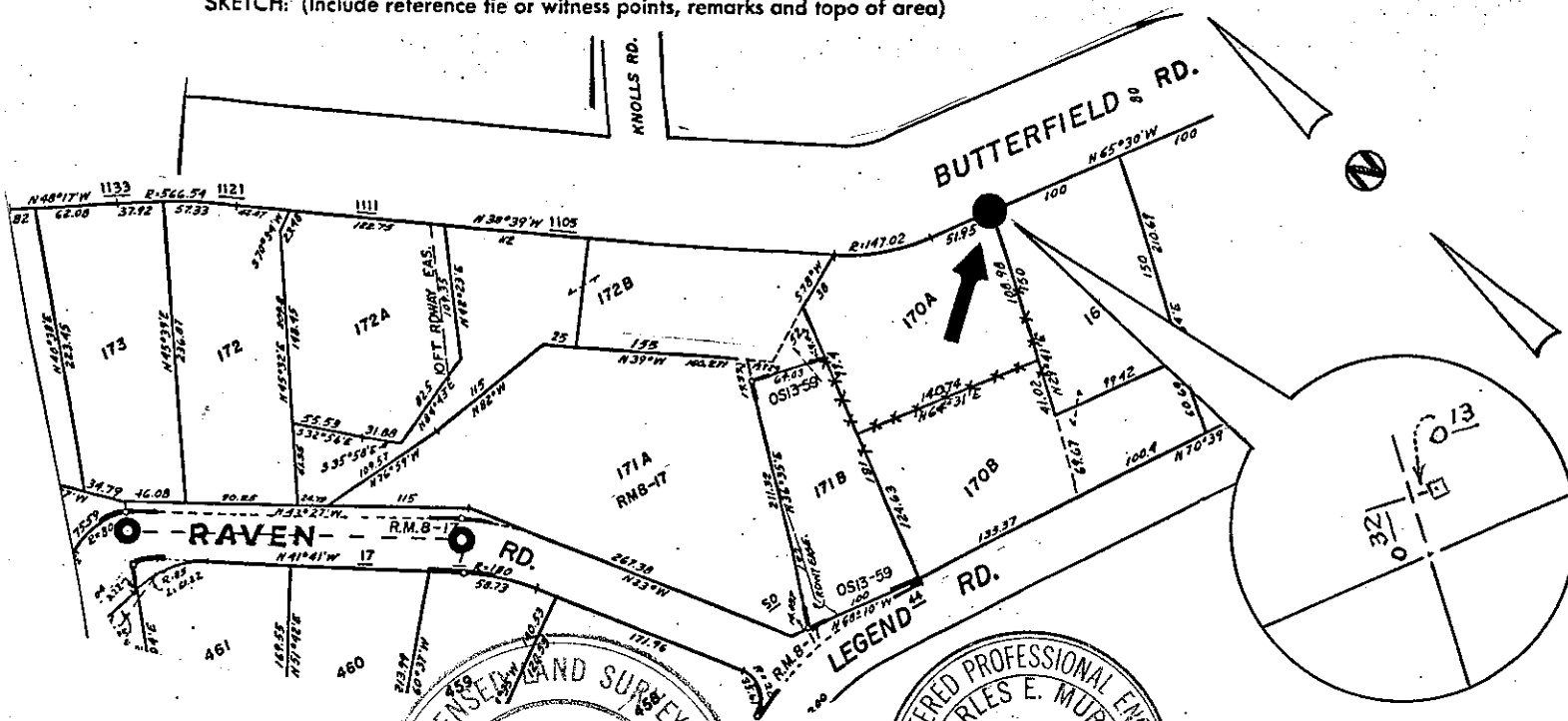
Map of Sleepy Hollow Oaks, 8 R.M. 17

PHYSICAL DESCRIPTION OF MONUMENTS REBUILT OR PERPETUATED

Found old 2" x 2" hub and 1" I.P. guard

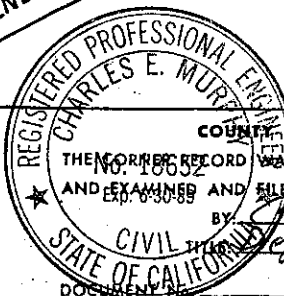
CALIFORNIA COORDINATE SYSTEM ORDER: FIRST ☐ SECOND ☐ THIRD ☐  
STATIONS USED: NGS (USC & GS) ☐ STATE ☐ COUNTY ☐ OTHER ☐ STATION \_\_\_\_\_ STATION \_\_\_\_\_  
ZONE \_\_\_\_\_ ELEVATION \_\_\_\_\_ NORTHINGS (Y) \_\_\_\_\_ EASTINGS (X) \_\_\_\_\_

SKETCH: (Include reference tie or witness points, remarks and topo of area)



SURVEYOR'S CERTIFICATE  
THIS CORNER RECORD WAS PREPARED BY ME OR UNDER MY DIRECTION IN CONFORMANCE WITH THE LAND SURVEYORS ACT ON Sept. 29 1986

SIGNED: [Signature]  
L.S. or R.C.E. No.: 3887



COUNTY SURVEYOR'S CERTIFICATE  
THE CORNER RECORD WAS RECEIVED 10-6 1986  
AND EXAMINED AND FILED 10-16 1986  
BY [Signature]  
CIVIL ENGINEER  
STATE OF CALIFORNIA  
DOCUMENT

STATEMENT ON BACK OF SHEET



JERRICO ASSOCIATES  
SUITE 27  
77 MARK DRIVE  
SAN RAFAEL, CA 94903

176-142-01

6642-A

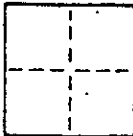
# CORNER RECORD

4/6

COUNTY OF Marin T. \_\_\_\_\_ R. \_\_\_\_\_ MERIDIAN \_\_\_\_\_ CALIFORNIA

CORNER TYPE: GOVT. CORNER ☐ MEANDER ☐ RANCHO ☐ CONTROL ☐ OTHER ☐

CORNER IDENTIFICATION — DATE OF VISIT \_\_\_\_\_ 19\_\_\_\_



CORNER — LEFT AS FOUND ☐ FOUND AND TAGGED ☐ REESTABLISHED OBLITERATED CORNER ☐ REBUILT ☐

PHYSICAL DESCRIPTION OF CORNER FOUND; EVIDENCE AND METHOD USED TO IDENTIFY OR REESTABLISH

Found standard subdivision monuments, as shown.

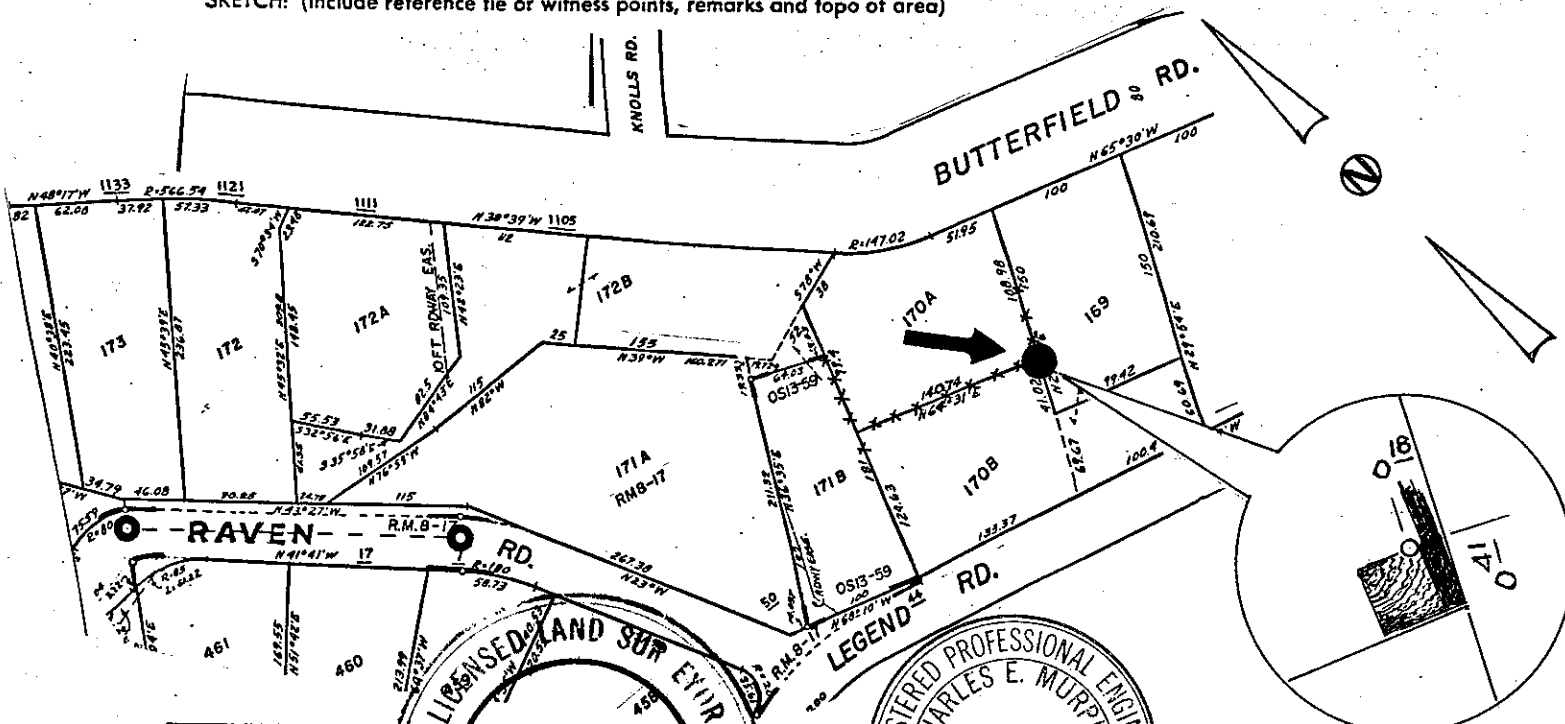
Map of Sleepy Hollow Oaks, 8 R.M. 17

PHYSICAL DESCRIPTION OF MONUMENTS REBUILT OR PERPETUATED

Set reference tack in corner fence post. (tag L.S. 3887)  
Ivy overgrowth on top of fence prevent setting corner without major trimming.

CALIFORNIA COORDINATE SYSTEM ORDER: FIRST ☐ SECOND ☐ THIRD ☐  
STATIONS USED: NGS (USC & GS) ☐ STATE ☐ COUNTY ☐ OTHER ☐ STATION \_\_\_\_\_ STATION \_\_\_\_\_  
ZONE \_\_\_\_\_ ELEVATION \_\_\_\_\_ NORTHINGS (Y) \_\_\_\_\_ EASTINGS (X) \_\_\_\_\_

SKETCH: (Include reference tie or witness points, remarks and topo of area)

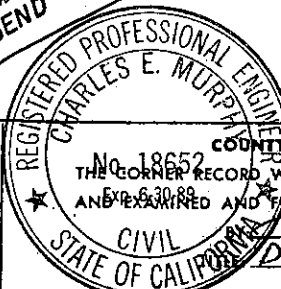


THIS CORNER RECORD WAS PREPARED BY OR UNDER MY DIRECTION IN CONFORMANCE WITH THE LAND SURVEYORS ACT ON Sept, 19 No. 388786

SIGNED: \_\_\_\_\_  
L.S. or R.C.E. No.: \_\_\_\_\_

JEROME EDWARD  
BRUNNER, JR.

STATE OF CALIFORNIA

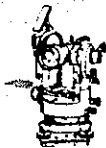


COUNTY SURVEYOR'S CERTIFICATE  
THE CORNER RECORD WAS RECEIVED 10-6 1986  
AND EXAMINED AND FILED 10-16 1986

CIVIL  
STATE OF CALIFORNIA  
Dep. Co. Surveyor

DOCUMENT No. \_\_\_\_\_

STATEMENT ON BACK OF SHEET



JERRICO ASSOCIATES  
SUITE 27  
77 MARK DRIVE  
SAN RAFAEL, CA 94903

176-142-01

6642-A

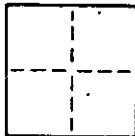
# CORNER RECORD

5/6

COUNTY OF Marin T. \_\_\_\_\_ R. \_\_\_\_\_ MERIDIAN \_\_\_\_\_ CALIFORNIA

CORNER TYPE: GOV'T. CORNER ☐ MEANDER ☐ RANCHO ☐ CONTROL ☐ OTHER ☐

CORNER IDENTIFICATION — DATE OF VISIT \_\_\_\_\_ 19\_\_\_\_



CORNER — LEFT AS FOUND ☐ FOUND AND TAGGED ☐ REESTABLISHED OBLITERATED CORNER ☐ REBUILT ☐

PHYSICAL DESCRIPTION OF CORNER FOUND; EVIDENCE AND METHOD USED TO IDENTIFY OR REESTABLISH

Found standard subdivision monuments, as shown.

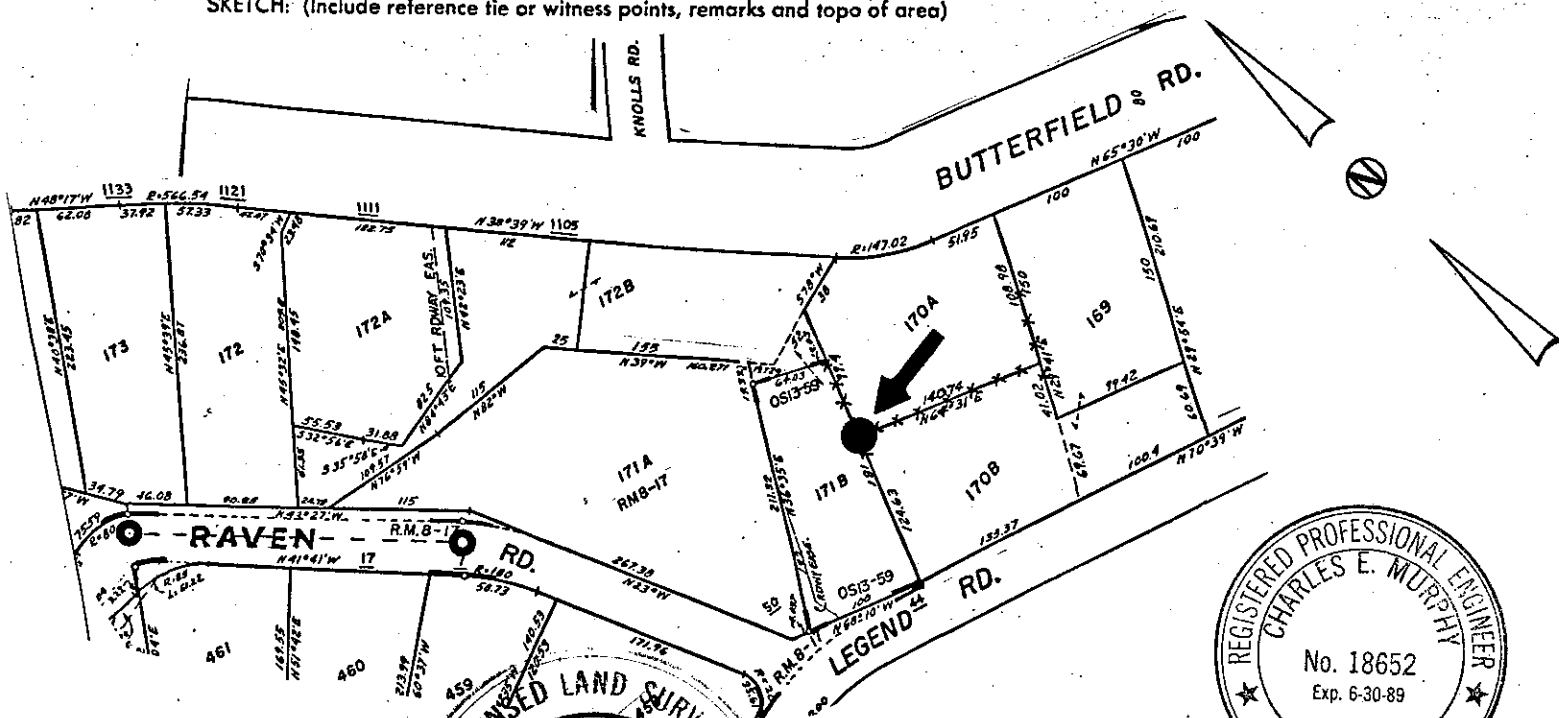
Map of Sleepy Hollow Oaks, 8 R.M. 17

PHYSICAL DESCRIPTION OF MONUMENTS REBUILT OR PERPETUATED

Set re-bar at fence corner w/tag L.S. 3887 wired thereto.

CALIFORNIA COORDINATE SYSTEM ORDER: FIRST ☐ SECOND ☐ THIRD ☐  
STATIONS USED: NGS (USC & GS) ☐ STATE ☐ COUNTY ☐ OTHER ☐ STATION \_\_\_\_\_ STATION \_\_\_\_\_  
ZONE \_\_\_\_\_ ELEVATION \_\_\_\_\_ NORTHINGS (Y) \_\_\_\_\_ EASTINGS (X) \_\_\_\_\_

SKETCH: (Include reference tie or witness points, remarks and topo of area)

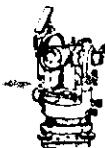


SURVEYOR'S CERTIFICATE  
THIS CORNER RECORD WAS PREPARED BY ME OR UNDER MY DIRECTION IN CONFORMANCE WITH THE LAND SURVEYORS ACT ON Sept, 29  
SIGNED: Jerome Edward Brunner  
L.S. or R.C.E. No.: 3887

COUNTY SURVEYOR'S CERTIFICATE  
THE CORNER RECORD WAS RECEIVED 10-16 1986  
AND EXAMINED AND FILED 10-16 1986  
BY: Charles E. Murphy  
TITLE: Reg. Co. Surveyor

DOCUMENT No. \_\_\_\_\_

STATEMENT ON BACK OF SHEET



JERRICO ASSOCIATES  
SUITE 27  
77 MARK DRIVE  
SAN RAFAEL, CA 94903

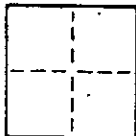
176-142-01

6642-A

# CORNER RECORD

6/6

COUNTY OF Marin T. \_\_\_\_\_ R. \_\_\_\_\_ MERIDIAN CALIFORNIA  
CORNER TYPE: GOVT. CORNER ☐ MEANDER ☐ RANCHO ☐ CONTROL ☐ OTHER ☐  
CORNER IDENTIFICATION — DATE OF VISIT \_\_\_\_\_ 19\_\_\_\_



CORNER — LEFT AS FOUND ☐ FOUND AND TAGGED ☐ REESTABLISHED OBLITERATED CORNER ☐ REBUILT ☐

PHYSICAL DESCRIPTION OF CORNER FOUND; EVIDENCE AND METHOD USED TO IDENTIFY OR REESTABLISH

Found standard subdivision monuments, as shown.

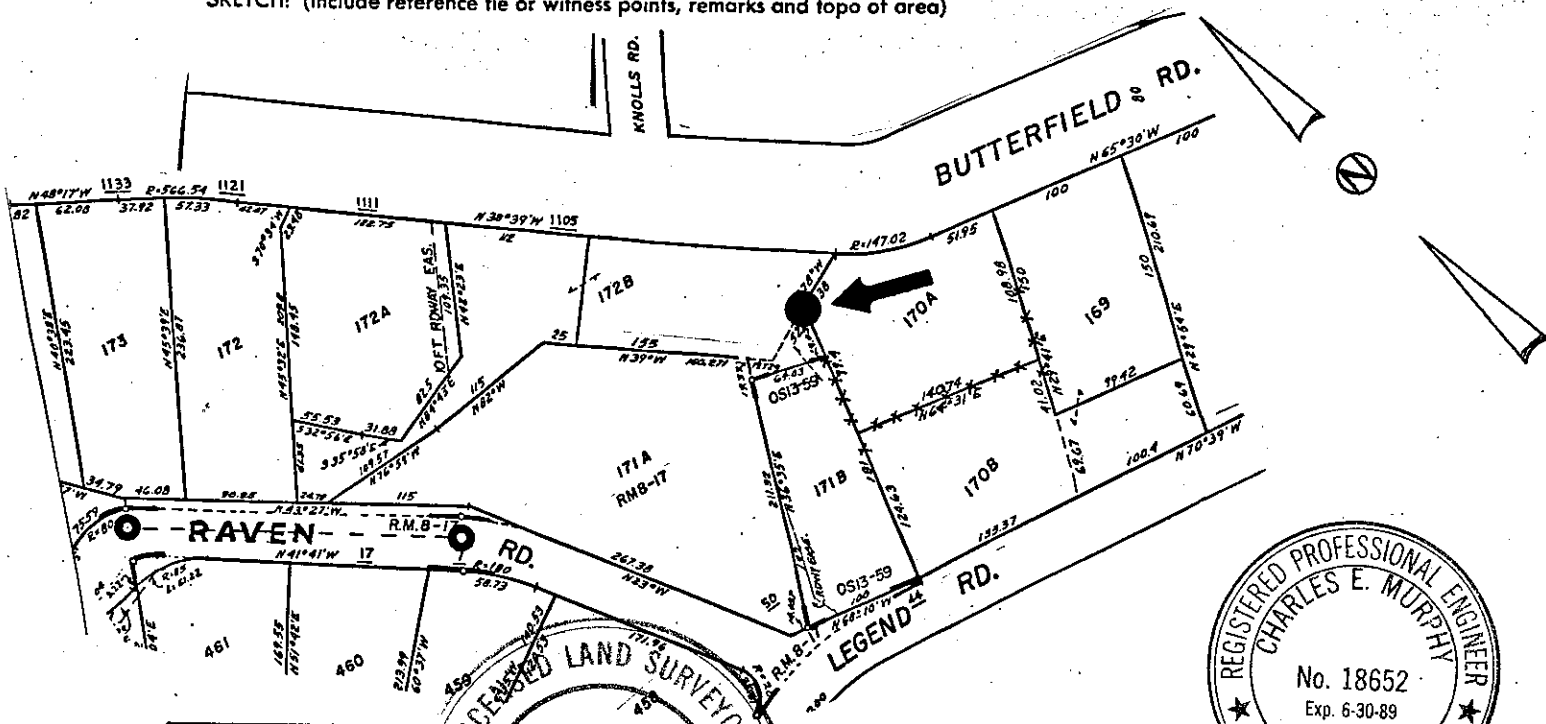
Map of Sleepy Hollow Oaks, 8 R.M. 17

PHYSICAL DESCRIPTION OF MONUMENTS REBUILT OR PERPETUATED

Set re-bar and cap L.S. 3887

CALIFORNIA COORDINATE SYSTEM ORDER: FIRST ☐ SECOND ☐ THIRD ☐  
STATIONS USED: NGS (USC & GS) ☐ STATE ☐ COUNTY ☐ OTHER ☐ STATION \_\_\_\_\_ STATION \_\_\_\_\_  
ZONE \_\_\_\_\_ ELEVATION \_\_\_\_\_ NORTHINGS (Y) \_\_\_\_\_ EASTINGS (X) \_\_\_\_\_

SKETCH: (Include reference tie or witness points, remarks and topo of area)



SURVEYOR'S CERTIFICATE  
THIS CORNER RECORD WAS PREPARED BY ME OR UNDER MY  
DIRECTION IN CONFORMANCE WITH THE SURVEYORS ACT  
ON Sept, 29 1986  
SIGNED: Edome Edward  
L.S. or R.C.E. No.: 3887  
STATE OF CALIFORNIA

COUNTY SURVEYOR'S CERTIFICATE  
THE CORNER RECORD WAS RECEIVED 10-16-86  
AND EXAMINED AND FILED 10-16-86  
BY: Charles E. Murphy  
TITLE: Dep. Co. Surveyor

DOCUMENT No. \_\_\_\_\_

STATEMENT ON BACK OF SHEET