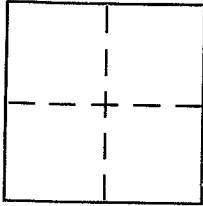


CORNER RECORD

Document Number 176-133-04
City of SAN ANSELMO County of MARIN, California

Brief Legal Description LOT 913 SLEEPY HOLLOW UNIT 9 10 MAPS 116



CORNER TYPE

Government Corner ☐ Control ☐
Meander ☐ Property ☒
Rancho ☐ Other ☐
Date of Survey APRIL 27, 2004

COORDINATES (Optional)

N. _____
E. _____
Zone _____ NAD27 ☐ NAD83 ☐
NAD83 Epoch _____
Elev. _____
Vert. Datum: NGVD29 ☐ NAVD88 ☐
Meas. Units: Metric ☐ Imperial ☐

Corner - Left as found ☐ Found and tagged ☐ Established ☐ Reestablished ☒ Rebuilt ☐

Identification and type of corner found: Evidence used to identify or procedure used to establish or reestablish the corner:

Re-establish the NORTHEASTERLY CORNER of LOT 913, MAP
of SLEEPY HOLLOW, Unit 9, (10 MAPS 116) from existing
street monuments of record on Dutch Valley Lane.
see sketch on reverse side for details.

A description of the physical condition of the monument as found and as set or reset: set 1/2" rebar
with PLS CAP 5379 AFFIXED TO TOP / REBAR CAP
set flush with surrounding grade

SURVEYOR'S STATEMENT

This Corner Record was prepared by me or under my direction in conformance with

the Land Surveyor's Act on October 15th 2004
Signed Douglas J. Scranton P.L.S. or R.C.E. No. PLS 5379

COUNTY SURVEYOR'S STATEMENT

This Corner Record was received OCTOBER 26, 2004

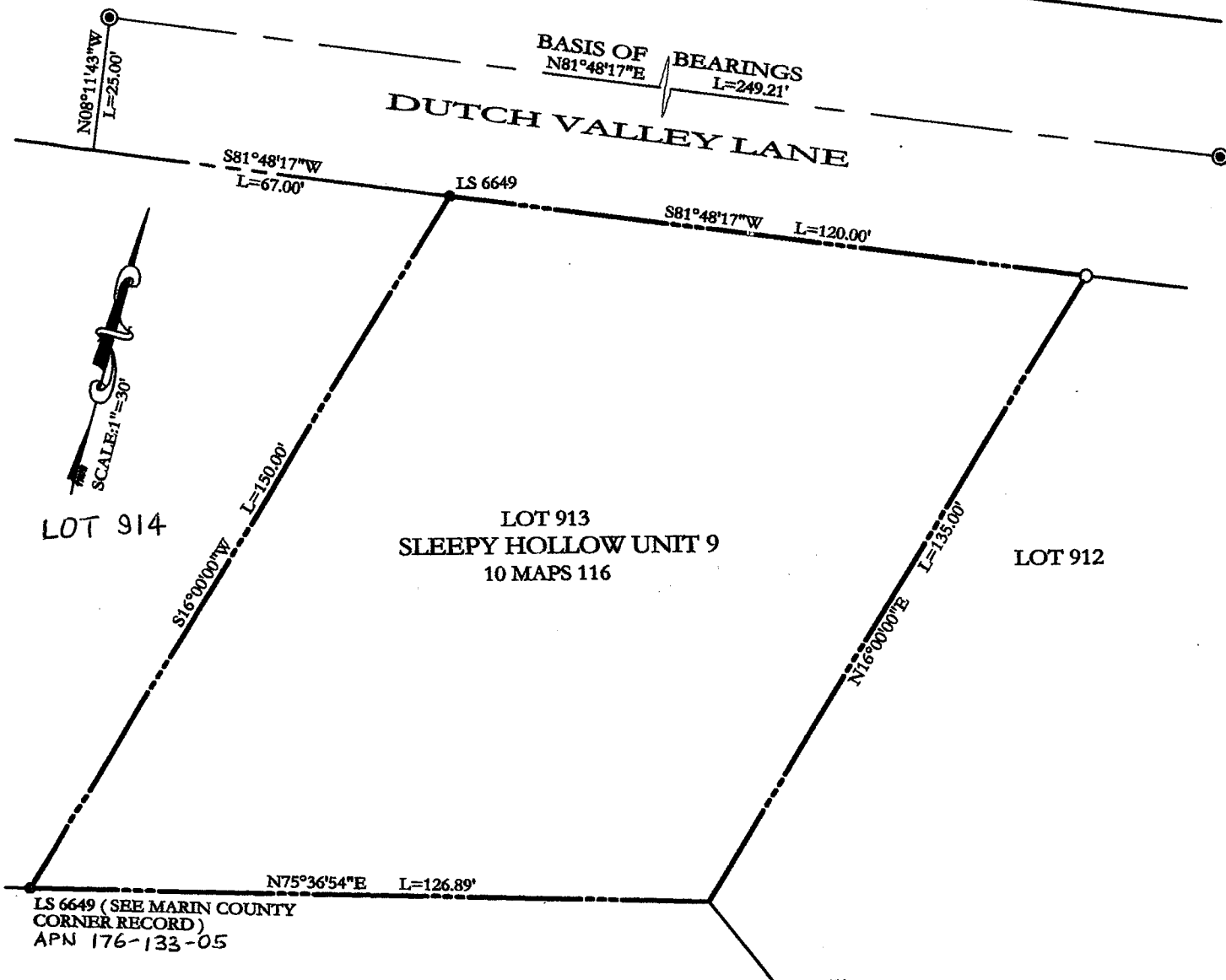
and examined and filed NOVEMBER 17, 2004

Signed [Signature] P.L.S. or R.C.E. No. 7128

Title COUNTY SURVEYOR

County Surveyor's Comment _____





ALL DISTANCES GIVEN IN FEET
AND DECIMALS THEREOF
NO EASEMENTS ARE DEPICTED

LEGEND

- SET 1/2" REBAR/PLS 5379
- STREET MONUMENT

BASIS OF BEARINGS

TAKEN AS S81°48'17"W BETWEEN MONUMENTS
ON DUTCH VALLEY LANE.