

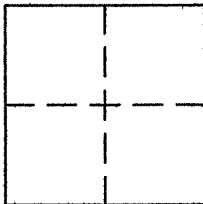
# CORNER RECORD

City of SAN ANSELMO

Document Number APN 176-101-20

County of MARIN, California

Brief Legal Description LOT 3, 8 RM 37



## CORNER TYPE

Government Corner ☐ Control ☐  
Meander ☐ Property ☒  
Rancho ☐ Other ☐  
Date of Survey 10-26-07

## COORDINATES (Optional)

N. \_\_\_\_\_  
E. \_\_\_\_\_  
Zone \_\_\_\_\_ NAD27 ☐ NAD83 ☐  
NAD83 Epoch \_\_\_\_\_  
Elev. \_\_\_\_\_  
Vert. Datum: NGVD29 ☐ NAVD88 ☐  
Meas. Units: Metric ☐ Imperial ☐

Corner - Left as found ☐ Found and tagged ☐ Established ☒ Reestablished ☒ Rebuilt ☐

Identification and type of corner found: Evidence used to identify or procedure used to establish or reestablish the corner:  
FOUND STANDARD STREET WELL MONUMENTS AS SHOWN ON 8 RM 37 AND ON REVERSE.

A description of the physical condition of the monument as found and as set or reset: \_\_\_\_\_

SET HUB AND TAGS, PLS 5296, ON 10' OFFSET LINE TO BOUNDARY AS SHOWN ON REVERSE.

## SURVEYOR'S STATEMENT

This Corner record was prepared by me or under my direction in conformance with  
the Land Surveyor's Act on OCTOBER 29, 2007

Signed [Signature] P.L.S. or R.C.E. No. PLS 5296

## COUNTY SURVEYOR'S STATEMENT

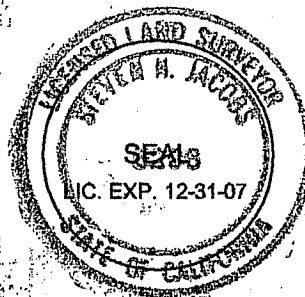
This Corner Record was received JANUARY 3, 2008

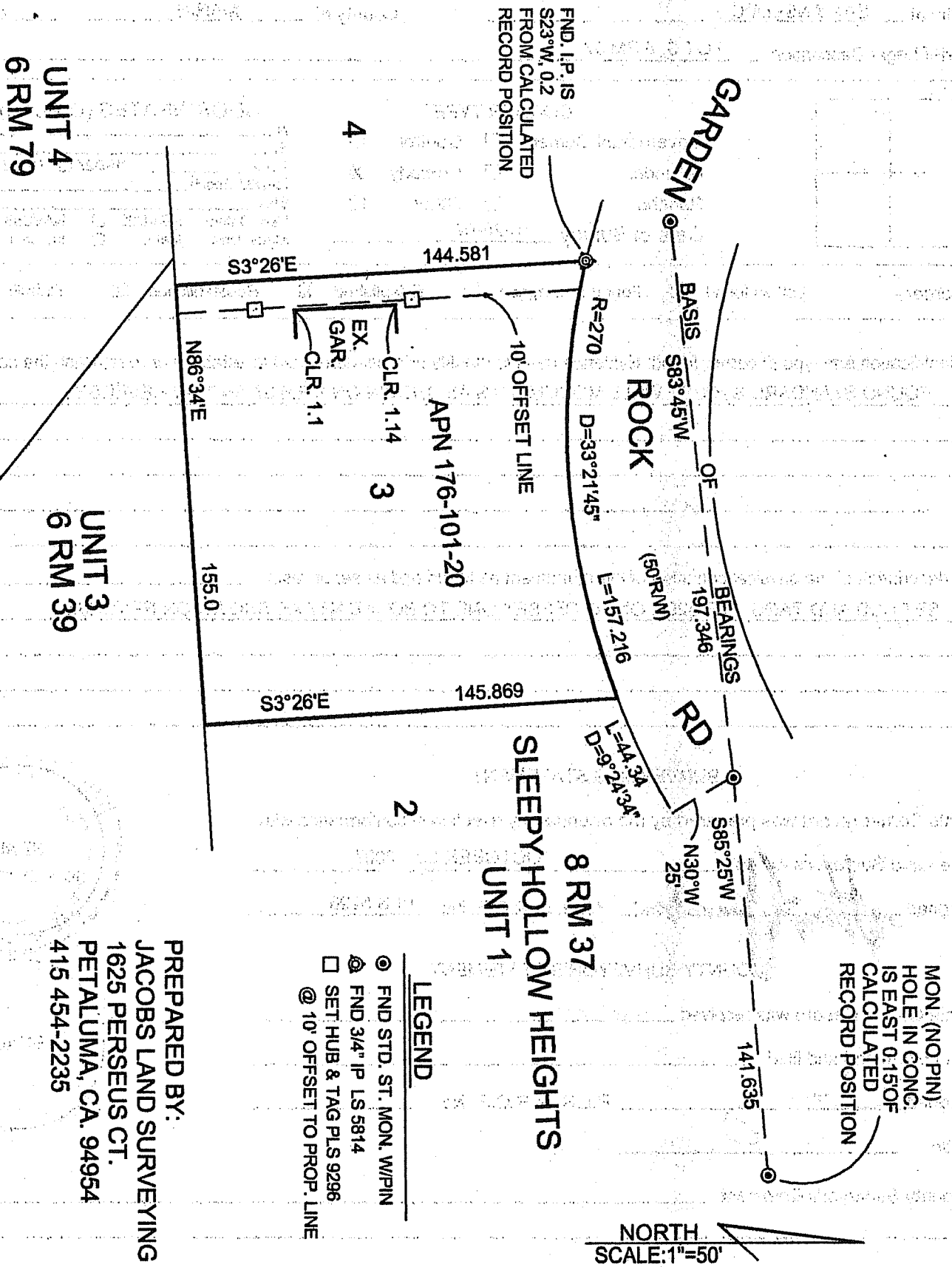
and examined and filed FEBRUARY 4, 2008

Signed [Signature] P.L.S. or R.C.E. No. 7128

Title COUNTY SURVEYOR

County Surveyor's Comment \_\_\_\_\_





**PREPARED BY:**  
**JACOBS LAND SURVEYING**  
**1625 PERSEUS CT.**  
**PETALUMA, CA. 94954**  
**415 454-2235**

JN 07-1149-M FB#58 DD#76