

# CORNER RECORD

Document Number

176-101-19

City of San AnselmoCounty of Marin

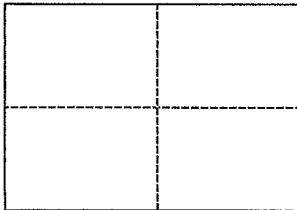
California

Brief Legal Description

Lot 2 of 8 RM 37

## CORNER TYPE

## COORDINATES (Optional)



Government Corner

Control

North

Meander

Property

☒

East

Rancho

Other

Zone

Datum

Date of Survey

June 8, 2016

Elev.

Corner \_\_\_\_\_ Left as found ☐ Found and tagged ☐ Established ☐ Reestablished ☒ Rebuilt ☐

Identification and type of corner found: Evidence used to identify or procedure used to establish or reestablish the corner:

Found and Held Street Monuments as shown on 8 RM 37

A description of the physical condition of the monument as found and as set or reset: \_\_\_\_\_

Set Hub and Tack on Property Line unless otherwise noted for the purpose of constructing a fence.

## SURVEYOR'S STATEMENT

This Corner Record was prepared by me or under my direction in conformance with  
the Land Surveyors' Act on \_\_\_\_\_ July 29, 2016

Signed

L.S. Number 6330



## COUNTY SURVEYOR'S STATEMENT

This Corner Record was received

AUGUST 8, 2016

and examined and filed

11/10/2017

Signed

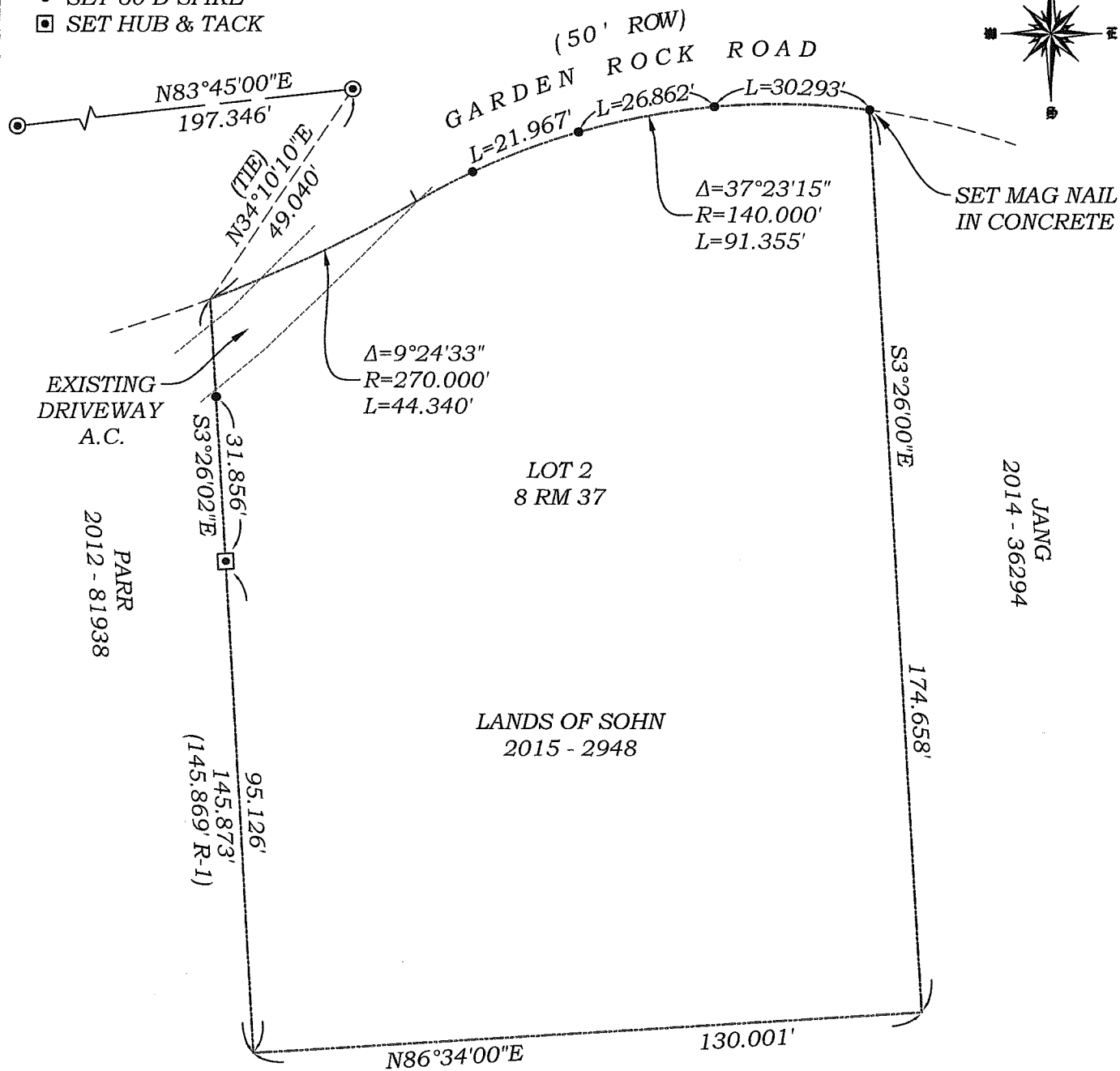
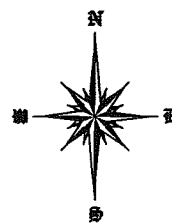
Title

COUNTY SURVEYOR

County Surveyor's Comment \_\_\_\_\_

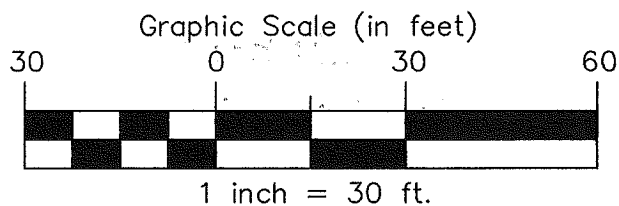
# LEGEND

- FOUND MONUMENT PER 8 RM 37
- SET 60 D SPIKE
- SET HUB & TACK



R-1 8 RM 37

RENFIELD  
2012-27633



R.W. DAVIS & ASSOCIATES, INC.  
LAND SURVEYORS

45 Leveroni Court  
Novato CA 94949  
L.S. 6330

Tel. (415) 883-9099  
Fax (415) 883-2016  
Email: rwdavis@rwdavis-survey.com

© 2013

Rev.

Date: 07-11-16

Job No. 457-003

Scale: 1" = 30'

CORNER RECORD