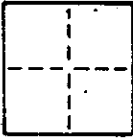


# CORNER RECORD

COUNTY OF Marin T.    R.    MERIDIAN CALIFORNIA

CORNER TYPE: GOVT. CORNER ☐ MEANDER ☐ RANCHO ☐ CONTROL ☐ OTHER ☒

CORNER IDENTIFICATION — DATE OF VISIT    19   



Centerline BC of Crane Drive near lots 237 and 258 per Map of Sleepy Hollow Unit Three (6 Maps 39).

CORNER — LEFT AS FOUND ☐ FOUND AND TAGGED ☐ REESTABLISHED OBLITERATED CORNER ☐ REBUILT ☐

## PHYSICAL DESCRIPTION OF CORNER FOUND; EVIDENCE AND METHOD USED TO IDENTIFY OR REESTABLISH

Found 3/4" iron pipe per map at beginning of curve as indicated by street improvements.

## PHYSICAL DESCRIPTION OF MONUMENTS, REBUILT OR PERPETUATED

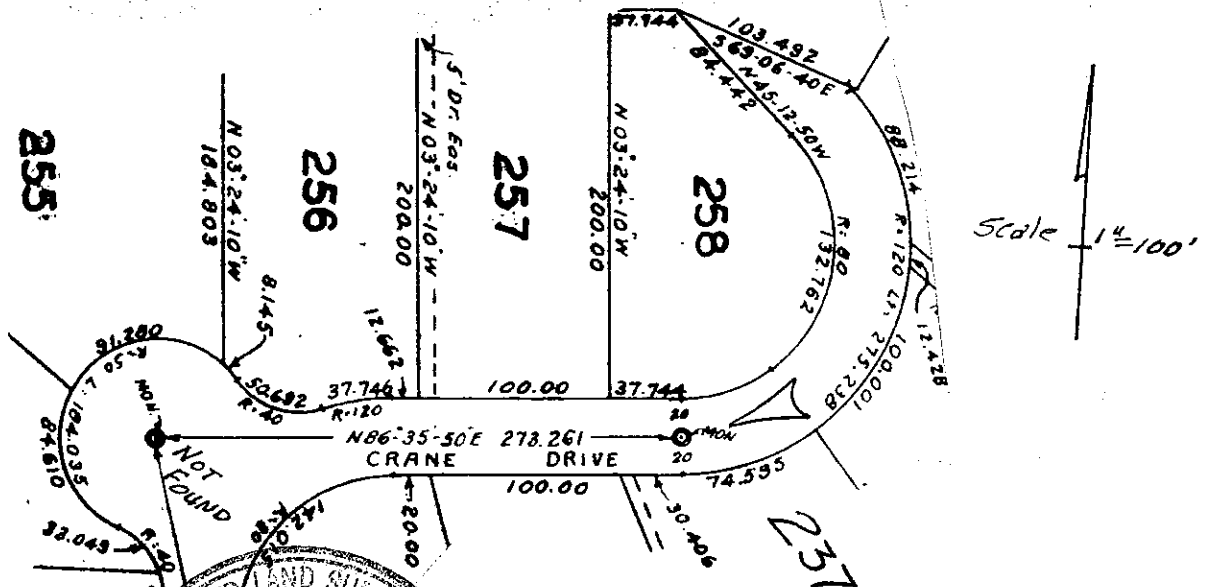
Replaced 3/4" iron pipe with DPW bronze disk in standard street monument.

CALIFORNIA COORDINATE SYSTEM ORDER: FIRST ☐ SECOND ☐ THIRD ☐

STATIONS USED: NGS (USC & GS) ☐ STATE ☐ COUNTY ☐ OTHER ☐ STATION    STATION   

ZONE    ELEVATION    NORTHINGS (Y)    EASTINGS (X)   

SKETCH: (Include reference tie or witness points, remarks and topo of area)



**SURVEYOR'S CERTIFICATE**  
THIS CORNER RECORD WAS PREPARED BY ME OR UNDER MY DIRECTION IN CONFORMANCE WITH THE LAND SURVEYORS ACT ON May 28 19 87

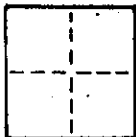
SIGNED: Donald Glenn Thomas  
L.S. or R.C.E. No.: 2530758

**COUNTY SURVEYOR'S CERTIFICATE**  
THE CORNER RECORD WAS RECEIVED 2-20 19 87 AND EXAMINED AND FILED 2-20 19 87 BY Charles E. Murphy CIVIL ENGINEER STATE OF CALIFORNIA

STATEMENT ON BACK OF SHEET YES ☐ NO ☒

# CORNER RECORD

COUNTY OF Marin T. \_\_\_\_\_ R. \_\_\_\_\_ MERIDIAN CALIFORNIA  
 CORNER TYPE: GOV'T. CORNER ☐ MEANDER ☐ RANCHO ☐ CONTROL ☐ OTHER ☒  
 CORNER IDENTIFICATION — DATE OF VISIT \_\_\_\_\_ 19\_\_\_\_



Centerline angle point in Van Winkle Drive near Lots 404 and 405 per Map of Sleepy Hollow Unit Four (6 Maps 79).

CORNER — LEFT AS FOUND ☐ FOUND AND TAGGED ☐ REESTABLISHED OBLITERATED CORNER ☐ REBUILT ☐  
 PHYSICAL DESCRIPTION OF CORNER FOUND; EVIDENCE AND METHOD USED TO IDENTIFY OR REESTABLISH

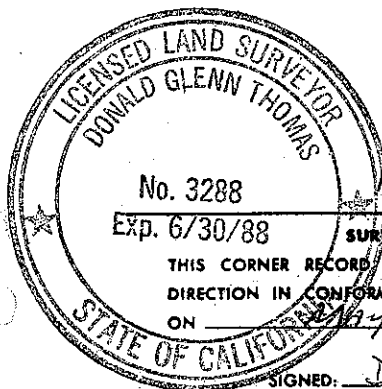
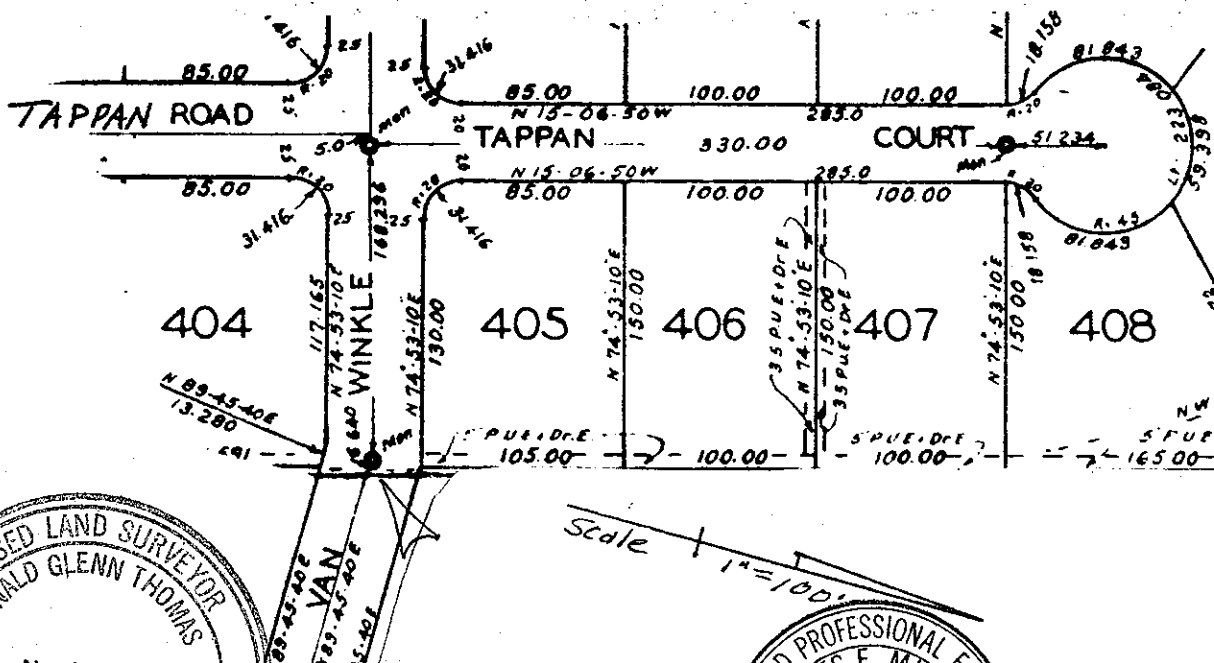
Found 3/4" iron pipe per map at point indicated by street improvements and in substantial agreement with neighboring monument.

PHYSICAL DESCRIPTION OF MONUMENTS, REBUILT OR PERPETUATED

Replaced 3/4" iron pipe with DPW bronze disk in standard street monument.

CALIFORNIA COORDINATE SYSTEM ORDER: FIRST ☐ SECOND ☐ THIRD ☐  
 STATIONS USED: NGS (USC & GS) ☐ STATE ☐ COUNTY ☐ OTHER ☐ STATION \_\_\_\_\_ STATION \_\_\_\_\_  
 ZONE \_\_\_\_\_ ELEVATION \_\_\_\_\_ NORTHINGS (Y) \_\_\_\_\_ EASTINGS (X) \_\_\_\_\_

SKETCH: (Include reference ties or witness points, remarks and topo of area)

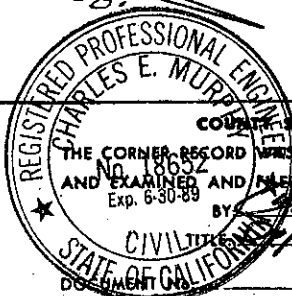


No. 3288  
Exp. 6/30/88

## SURVEYOR'S CERTIFICATE

THIS CORNER RECORD WAS PREPARED BY ME OR UNDER MY DIRECTION IN CONFORMANCE WITH THE LAND SURVEYORS ACT ON July 28 1987

SIGNED: Donald G Thomas  
L.S. or R.C.E. No.: LS 3288



## COUNTY SURVEYOR'S CERTIFICATE

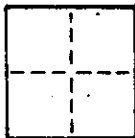
THE CORNER RECORD WAS RECEIVED \_\_\_\_\_ 19\_\_\_\_  
 AND EXAMINED AND FILED 7-20 1987  
 Exp. 6-30-89 BY: Charles E. Murphy  
 CIVIL ENGINEER, Cal. Surv.

STATEMENT ON BACK OF SHEET

YES ☐ NO ☒

# CORNER RECORD

COUNTY OF Marin T. \_\_\_\_\_ R. \_\_\_\_\_ MERIDIAN \_\_\_\_\_ CALIFORNIA  
 CORNER TYPE: GOV'T. CORNER ☐ MEANDER ☐ RANCHO ☐ CONTROL ☐ OTHER ☒  
 CORNER IDENTIFICATION — DATE OF VISIT \_\_\_\_\_ 19\_\_\_\_



Centerline intersection of Van Winkle Drive and Tappan Court  
per Map of Sleepy Hollow Unit Four (6 Maps 79).

CORNER — LEFT AS FOUND ☐ FOUND AND TAGGED ☐ REESTABLISHED OBLITERATED CORNER ☐ REBUILT ☐

PHYSICAL DESCRIPTION OF CORNER FOUND; EVIDENCE AND METHOD USED TO IDENTIFY OR REESTABLISH

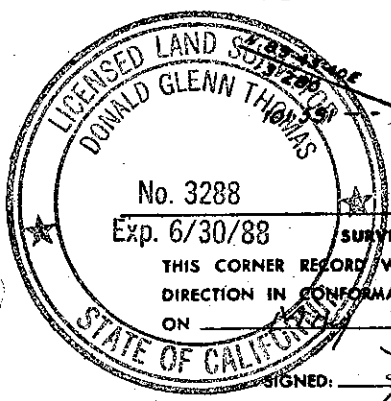
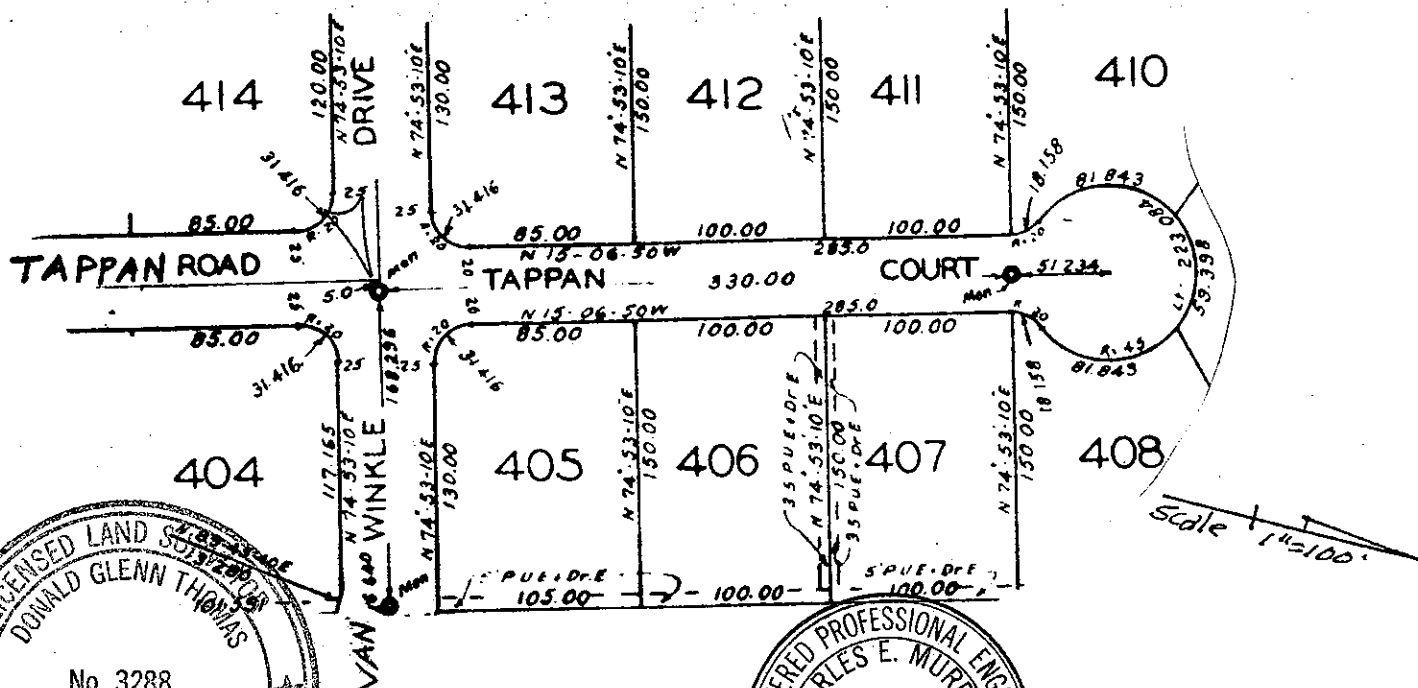
Found 3/4" iron pipe per Map at point indicated by street improvements and  
in substantial ageereement with neighboring monuments.

PHYSICAL DESCRIPTION OF MONUMENTS, REBUILT OR PERPETUATED

Replaced 3/4" iron pipe with DPW bronze disk in standard street monument.

CALIFORNIA COORDINATE SYSTEM ORDER: FIRST ☐ SECOND ☐ THIRD ☐  
 STATIONS USED: NGS (USC & GS) ☐ STATE ☐ COUNTY ☐ OTHER ☐ STATION \_\_\_\_\_ STATION \_\_\_\_\_  
 ZONE \_\_\_\_\_ ELEVATION \_\_\_\_\_ NORTHINGS (Y) \_\_\_\_\_ EASTINGS (X) \_\_\_\_\_

SKETCH: (Include reference tie or witness points, remarks and topo of area)



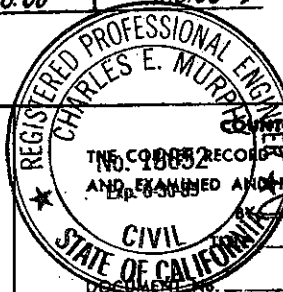
No. 3288  
Exp. 6/30/88

## SURVEYOR'S CERTIFICATE

THIS CORNER RECORD WAS PREPARED BY ME OR UNDER MY  
DIRECTION IN CONFORMANCE WITH THE LAND SURVEYORS ACT  
ON \_\_\_\_\_ 28 \_\_\_\_\_ 19 87

SIGNED: Donald G. Thomas

L.S. or R.C.E. No.: LS 3288



## COUNTY SURVEYOR'S CERTIFICATE

THE CORNER RECORD WAS RECEIVED \_\_\_\_\_ 19\_\_\_\_  
AND EXAMINED AND FILED \_\_\_\_\_ 19 87

Charles E. Murphy  
DIP. CO. SURV.

STATEMENT ON BACK OF SHEET

YES ☐ NO ☒

# CORNER RECORD

COUNTY OF Marin T. \_\_\_\_\_ R. \_\_\_\_\_ MERIDIAN CALIFORNIA

CORNER TYPE: GOV'T. CORNER ☐ MEANDER ☐ RANCHO ☐ CONTROL ☐ OTHER ☒

CORNER IDENTIFICATION — DATE OF VISIT \_\_\_\_\_ 19\_\_\_\_



Centerline at beginning of bulb on Tappan Court per Map of Sleepy Hollow Unit Four (6 Maps 79).

CORNER — LEFT AS FOUND ☐ FOUND AND TAGGED ☐ REESTABLISHED OBLITERATED CORNER ☐ REBUILT ☐

PHYSICAL DESCRIPTION OF CORNER FOUND; EVIDENCE AND METHOD USED TO IDENTIFY OR REESTABLISH

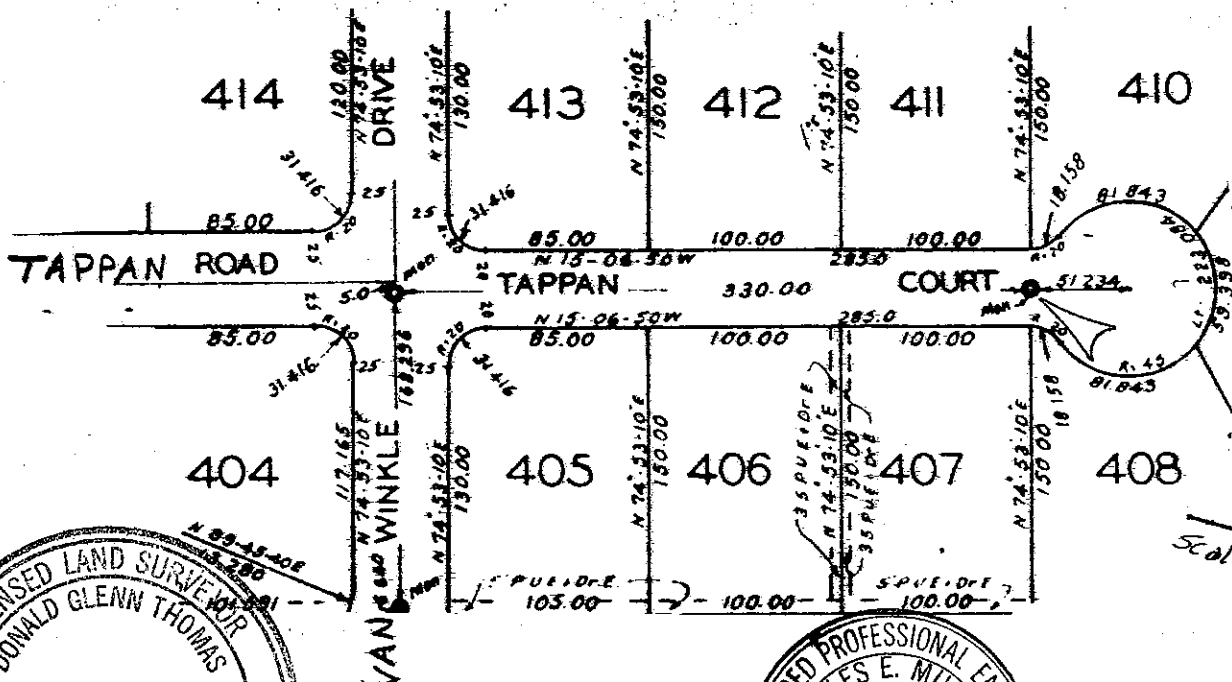
Found 3/4" iron pipe per Map at point indicated by street improvements and in substantial agreement with neighboring monument.

PHYSICAL DESCRIPTION OF MONUMENTS, REBUILT OR PERPETUATED

**R**eplaced 3/4" iron pipe with DPW bronze disk in standard street monument

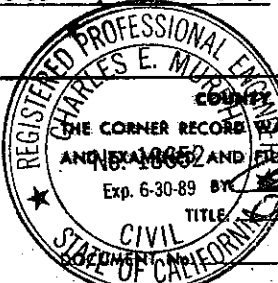
CALIFORNIA COORDINATE SYSTEM ORDER: FIRST ☐ SECOND ☐ THIRD ☐  
STATIONS USED: NGS (USC & GS) ☐ STATE ☐ COUNTY ☐ OTHER ☐ STATION \_\_\_\_\_ STATION \_\_\_\_\_  
ZONE \_\_\_\_\_ ELEVATION \_\_\_\_\_ NORTHINGS (Y) \_\_\_\_\_ EASTINGS (X) \_\_\_\_\_

SKETCH: (Include reference tie or witness points, remarks and topo of area)



No. 3288  
THIS CORNER RECORD WAS PREPARED BY ME OR UNDER MY DIRECTION IN CONFORMANCE WITH THE LAND SURVEYORS ACT ON \_\_\_\_\_ 1987

*Donald J. Thomas*  
LS 3288



COUNTY SURVEYOR'S CERTIFICATE  
THE CORNER RECORD WAS RECEIVED \_\_\_\_\_ 1987  
AND EXAMINED AND FILED \_\_\_\_\_  
Exp. 6-30-89 BY *Charles E. Murphy*  
TITLE *Dep. Co. Surveyor*

STATEMENT ON BACK OF SHEET

YES ☐ NO ☒